

MONUMENT 394

CERTIFICATE OF LOCATION OF GOVERNMENT CORNER

East Quarter Corner of Section 12, Township 29 North, Range 22 West, County of Ramsey, State of Minnesota.

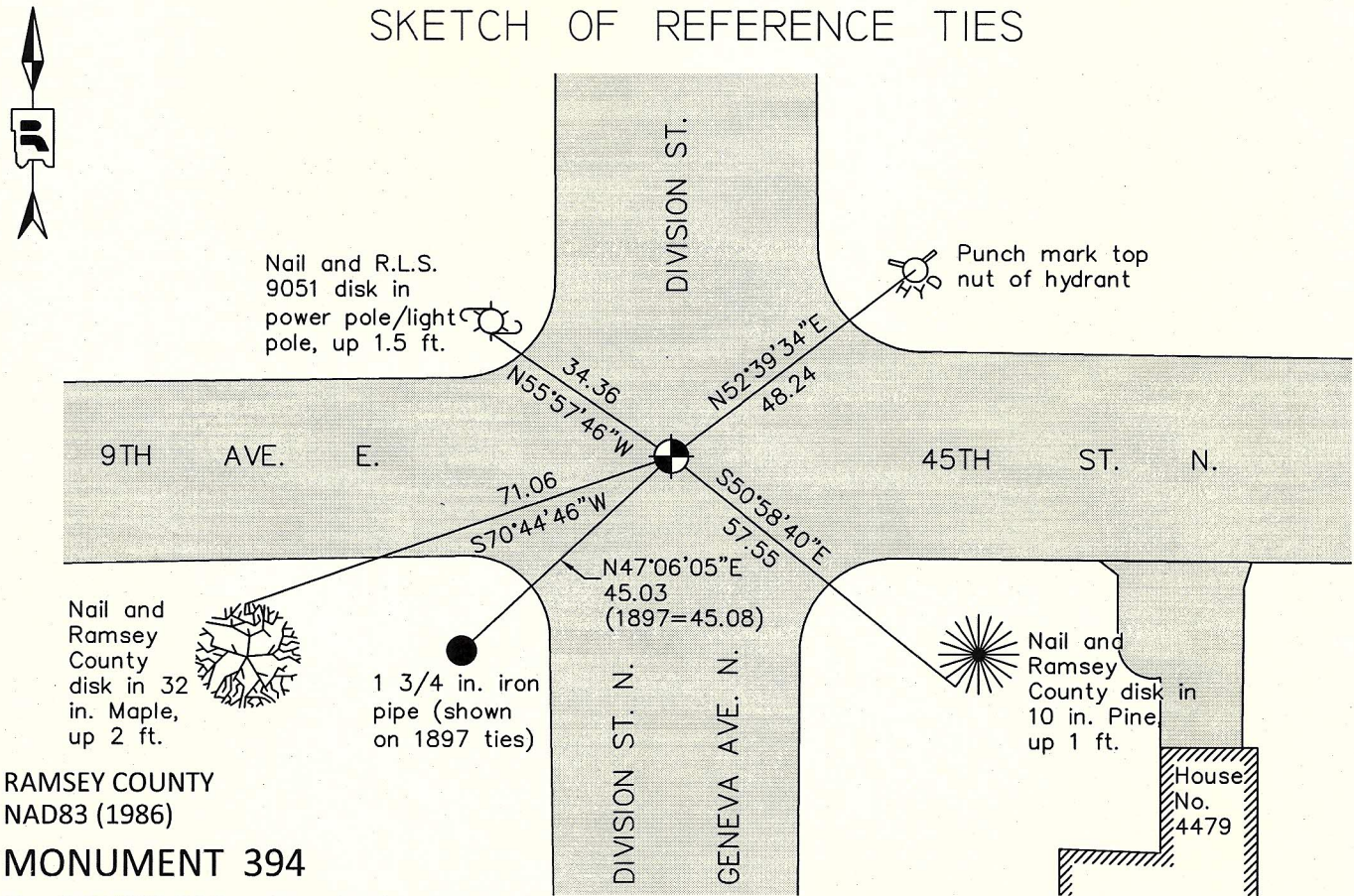
At the corner location shown on the sketch

On June 29, 2011 found a cast iron monument, flush in P.V.C pipe with concrete.

left monument as found raised/lowered monument removed monument (explain)

On _____ placed a _____

SKETCH OF REFERENCE TIES



RAMSEY COUNTY
NAD83 (1986)
MONUMENT 394

X= 603079.515 (Easting)
Y= 181517.060 (Northing)

ALL DISTANCES ARE SHOWN IN U.S. SURVEY FEET.
BEARINGS ARE FOR TIE REFERENCE PURPOSES ONLY.

Statements of evidence relative to this corner are on the following page.

I hereby certify that this document was prepared by me or under my direct supervision and that I am a duly Licensed Land Surveyor under the laws of the State of Minnesota.

Daniel D. Baar 8-15-12
Daniel D. Baar Date
Minnesota License No. 45816

County Surveyor
 Deputy County Surveyor Land Surveyor

OFFICE OF COUNTY SURVEYOR
County of Ramsey

I hereby certify that this document was filed in the County Surveyor's office this 15th day of August, 2012.

Craig W. Hinzman
Craig W. Hinzman, L.S.
Ramsey County Surveyor

MONUMENT 394

East Quarter Corner of Section 12, Township 29 North, Range 22 West

Set Post at qr. Sec. Corner, Wht. Oak 10 S88°W 29, Wht. Oak 6 N25°W 22, October 9, 1847.

The 1/4 Corner on East side of Section 12 on County line was fixed from stakes found in 3rd Addition to North St. Paul Proper, tied it and set Monument September 21, 1897.

Tied iron pin, December, 1967.

Found a 3/4 in. solid iron 2 ft. long, down 1 1/2 in.; dug down 7 in. and found a 2 in. solid 4.4 ft. long pointed iron. Dug to 4.7 ft. and found nothing more. Set a 20 in. cast iron monument to mark 2 in. solid iron position, February 25, 1976.

Checked and tied monument, July 5, 1984.

Retied monument, August 9, 1990.

Retied monument, October 18, 2000.

Monument raised up to grade and concrete collar placed around monument, June 22, 2005.

Tied monument, June 23, 2006.

Retied a cast iron monument, flush, in P.V.C with concrete, June 29, 2011.

Found a 1-3/4 in. iron pipe at the Northeast corner of Block 31, SECOND ADDITION TO NORTH ST. PAUL RAMSEY COUNTY, MINN. The tie distance from the cast iron monument at the Quarter Corner to the iron pipe at the block corner matches the tie distance from the granite monument to the block corner measured September 21, 1897, added 1-3/4 iron pipe to certificate, July 25, 2012.