

MONUMENT 391

CERTIFICATE OF LOCATION OF SECTION SUBDIVISION MONUMENT

Center of Section 11, Township 29 North, Range 22 West, County of Ramsey, State of Minnesota.

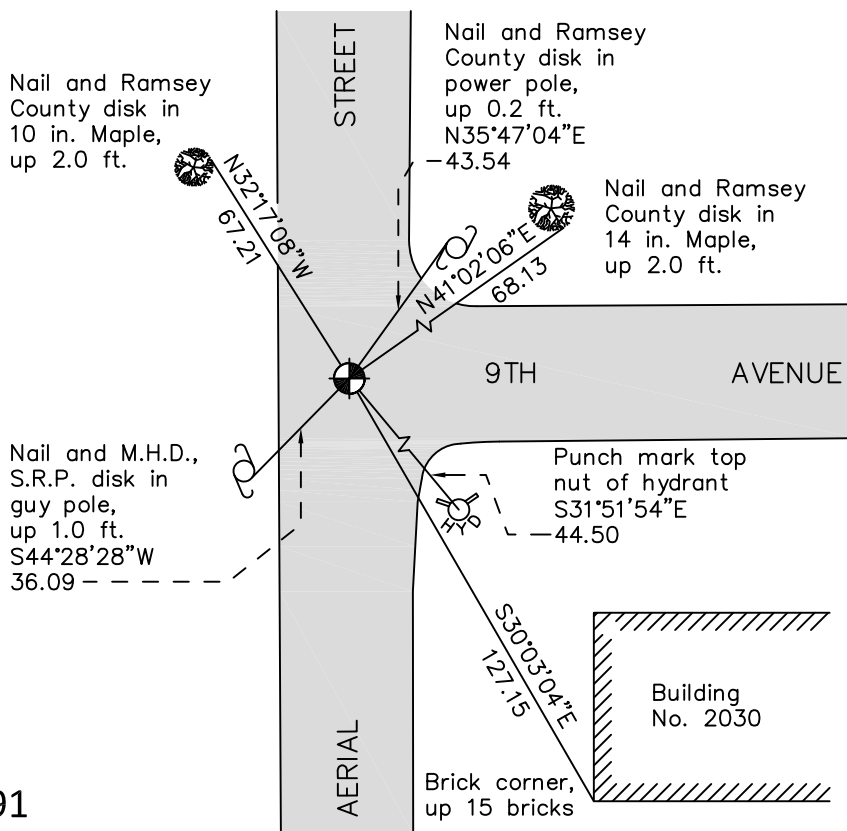
At the corner location shown on the sketch

On June 27, 2011 found a cast iron monument, flush.

left monument as found raised/lowered monument removed monument (explain)

On _____ placed a _____

SKETCH OF REFERENCE TIES



RAMSEY COUNTY
NAD83 (1986)

MONUMENT 391

X= 595237.900 (Easting)
Y= 181355.983 (Northing)

ALL DISTANCES ARE SHOWN IN U.S. SURVEY FEET.
BEARINGS ARE FOR TIE REFERENCE PURPOSES ONLY.

Statements of evidence relative to this corner are on the following page.

I hereby certify that this document was prepared by me or under my direct supervision and that I am a duly Licensed Land Surveyor under the laws of the State of Minnesota.

Daniel D. Baar Date _____
Minnesota License No. 45816

County Surveyor
 Deputy County Surveyor Land Surveyor

OFFICE OF COUNTY SURVEYOR
County of Ramsey

I hereby certify that this document was filed in the County Surveyor's office this _____ day of _____, 20 ____.

Craig W. Hinzman, L.S.
Ramsey County Surveyor

MONUMENT 391

The Center of Section 11 was fixed by intersection August, 1896, set monument.

Found a cast iron monument flush and tied, November 1, 1974.

Checked monument, May 11, 1981.

Checked monument, August 9, 1990.

Cast iron monument missing due to sewer construction, July 6, 1999.

Located position and tied, July 8, 1999.

Set a 20 in. cast iron monument flush, September 16, 1999.

Cemented monument, November 12, 1999.

Tied monument, August 8, 2006.

Retied a cast iron monument, June 27, 2011.