

MONUMENT 389

CERTIFICATE OF LOCATION OF SECTION SUBDIVISION MONUMENT

Center of Section 10, Township 29 North, Range 22 West, County of Ramsey, State of Minnesota.

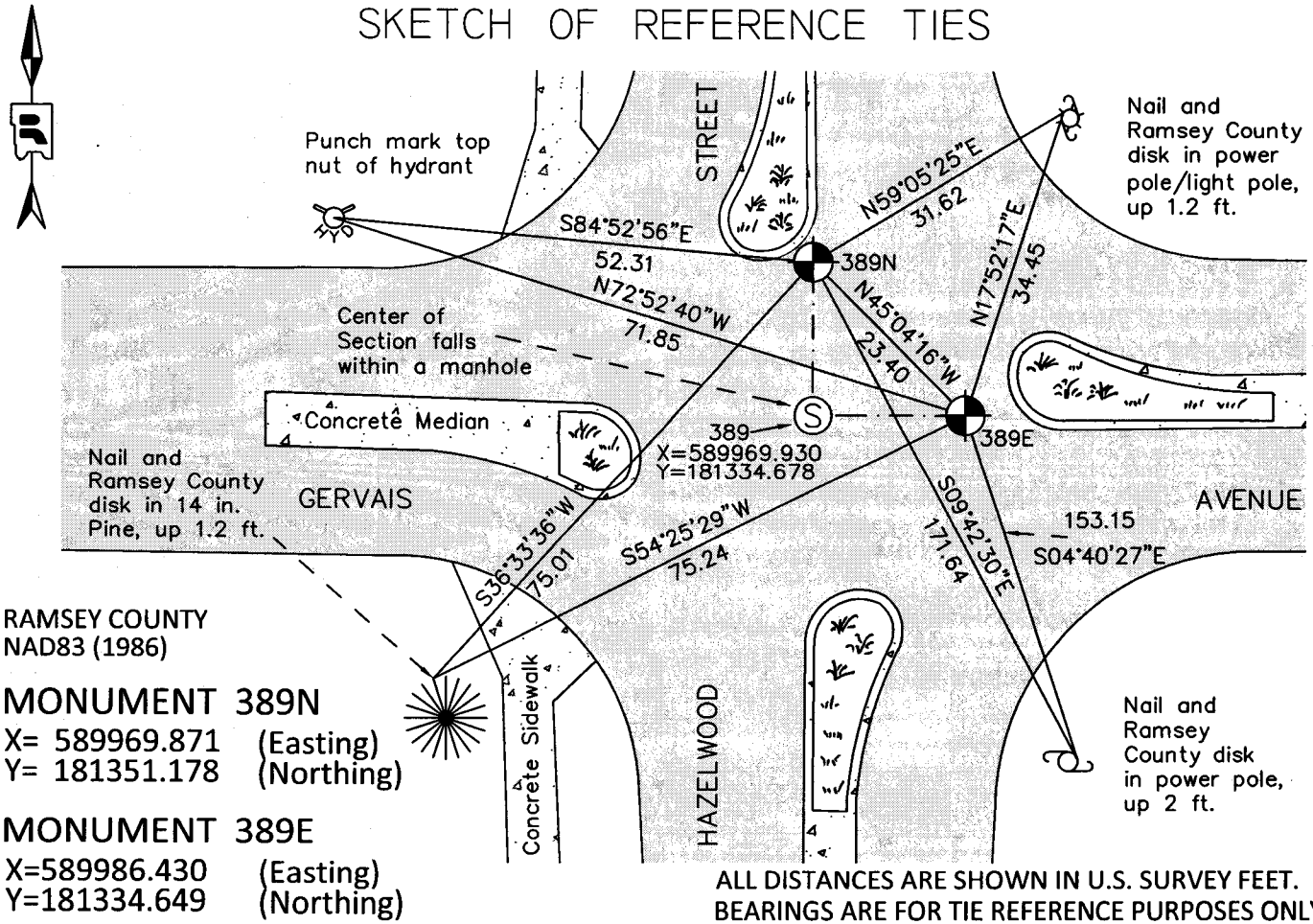
At the corner location shown on the sketch

On June 30, 2011 found two cast iron witness monuments within cast iron manhole assemblies.

left monument as found raised/lowered monument removed monument (explain)

On _____ placed a _____

SKETCH OF REFERENCE TIES



RAMSEY COUNTY
NAD83 (1986)

MONUMENT 389N
X= 589969.871 (Easting)
Y= 181351.178 (Northing)

MONUMENT 389E
X=589986.430 (Easting)
Y=181334.649 (Northing)

ALL DISTANCES ARE SHOWN IN U.S. SURVEY FEET.
BEARINGS ARE FOR TIE REFERENCE PURPOSES ONLY.

Statements of evidence relative to this corner are on the following page.

I hereby certify that this document was prepared by me or under my direct supervision and that I am a duly Licensed Land Surveyor under the laws of the State of Minnesota.

Daniel D. Baar 7-24-12
Daniel D. Baar Date
Minnesota License No. 45816

- County Surveyor
 Deputy County Surveyor Land Surveyor

OFFICE OF COUNTY SURVEYOR
County of Ramsey

I hereby certify that this document was filed in the County Surveyor's office this 24th day of July, 20 12.

Craig W. Hinzman
Craig W. Hinzman, L.S.
Ramsey County Surveyor

MONUMENT 389

Center of Section 10, Township 29 North, Range 22 West

Fixed the Center of Section 10 by Intersection and set Monument, October 19, 1900.

Found a manhole at monument location. Put a punch mark in top of manhole by using old ties from the City of Maplewood and County Highway Department. Set Witness monuments 33 ft. North and East on the Quarter Section lines. No date given in field book.

Tied monuments, April 10, 1975.

Checked monuments, August 9, 1990.

Monument destroyed by City of Maplewood; set 20 in. cast iron monument, October 13, 1992.

Removed both cast iron monuments for City of Maplewood, June 13, 1997.

Set 20 in. cast iron monuments within cast iron manhole assemblies at 16.5 ft. North and 16.5 ft. East of Center location, May 13, 1998.

Tied monuments, April 2, 2001.

Retied monuments, August 8, 2006.

Retied both cast iron monuments within cast iron manhole assemblies, June 30, 2011.