

# MONUMENT 385

## CERTIFICATE OF LOCATION OF SECTION SUBDIVISION MONUMENT

Center of Section 8, Township 29 North, Range 22 West, County of Ramsey, State of Minnesota.

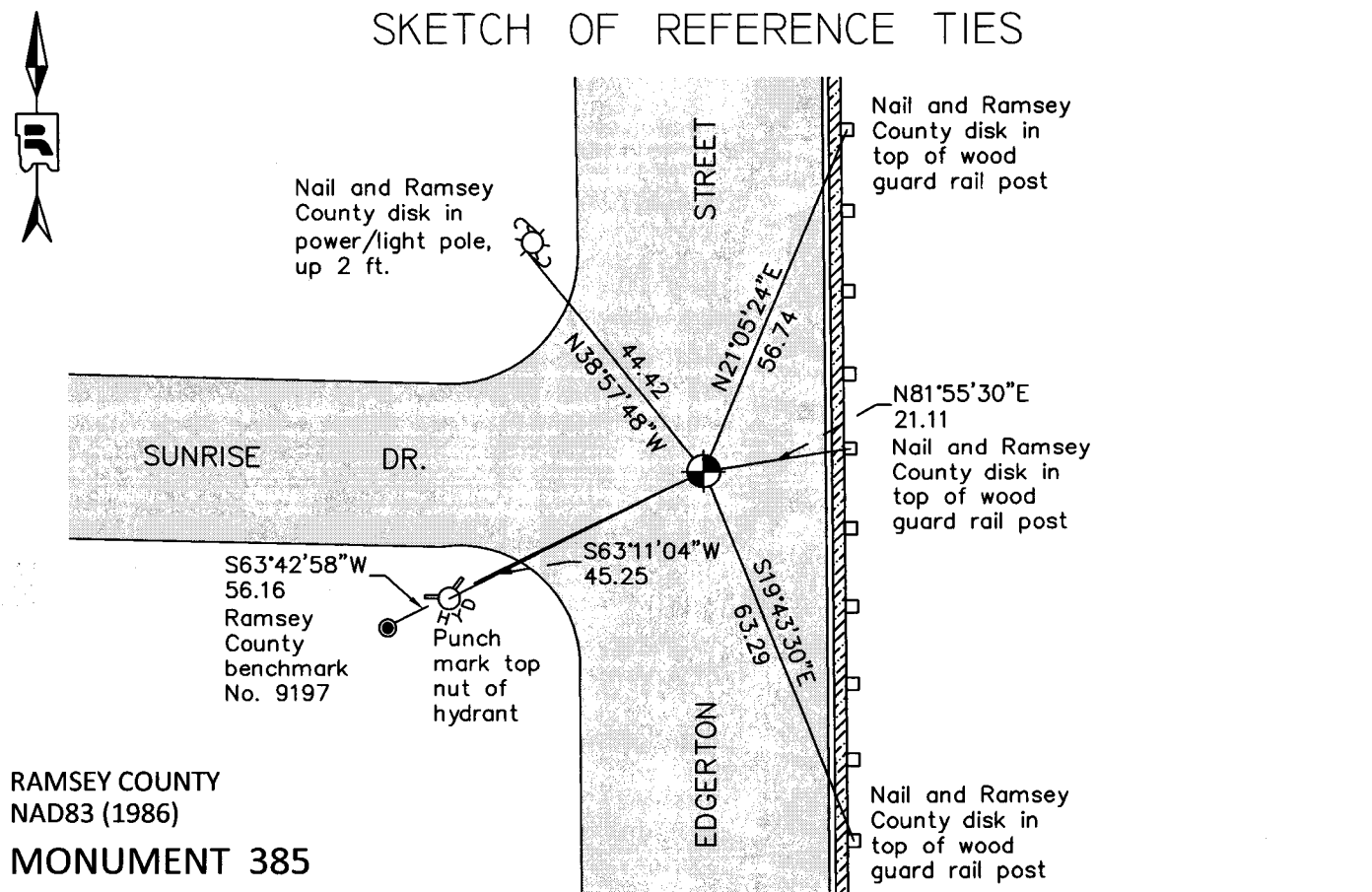
At the corner location shown on the sketch

On July 5, 2011 found a cast iron monument, down 0.3 ft in bituminous road.

left monument as found       raised/lowered monument       removed monument (explain)

On \_\_\_\_\_ placed a \_\_\_\_\_

### SKETCH OF REFERENCE TIES



RAMSEY COUNTY  
NAD83 (1986)  
**MONUMENT 385**

X= 579385.205 (Easting)  
Y= 181250.741 (Northing)

ALL DISTANCES ARE SHOWN IN U.S. SURVEY FEET.  
BEARINGS ARE FOR TIE REFERENCE PURPOSES ONLY.

Statements of evidence relative to this corner are on the following page.

I hereby certify that this document was prepared by me or under my direct supervision and that I am a duly Licensed Land Surveyor under the laws of the State of Minnesota.

Daniel D. Baar      7-20-12  
Daniel D. Baar      Date  
Minnesota License No. 45816

- County Surveyor       Land Surveyor  
 Deputy County Surveyor

OFFICE OF COUNTY SURVEYOR  
County of Ramsey

I hereby certify that this document was filed in the County Surveyor's office this 20th day of JULY, 2012.

Craig W. Hinzman  
Craig W. Hinzman, L.S.  
Ramsey County Surveyor

# MONUMENT 385

Center of Section 8, Township 29 North, Range 22 West

The Center of Section 8 appears to have been established +/-June 1895 per Ramsey County Resurvey notes.

Found a granite monument, down 4 in. and tied, September 18, 1974.

Checked monument, September 12, 1977.

Found a cast iron monument, probably a 4 1/2 in. monument with the date of placement unknown; tied, August 10, 1990.

Retied monument, down +/-0.2 ft., December 9, 1999.

Retied monument, June 29, 2006.

Retied cast iron monument, down 0.3 ft. in bituminous road, July 5, 2011.