

MONUMENT 371

CERTIFICATE OF LOCATION OF GOVERNMENT CORNER

Northeast Corner of Section 12, Township 29 North, Range 22 West, County of Ramsey, State of Minnesota.

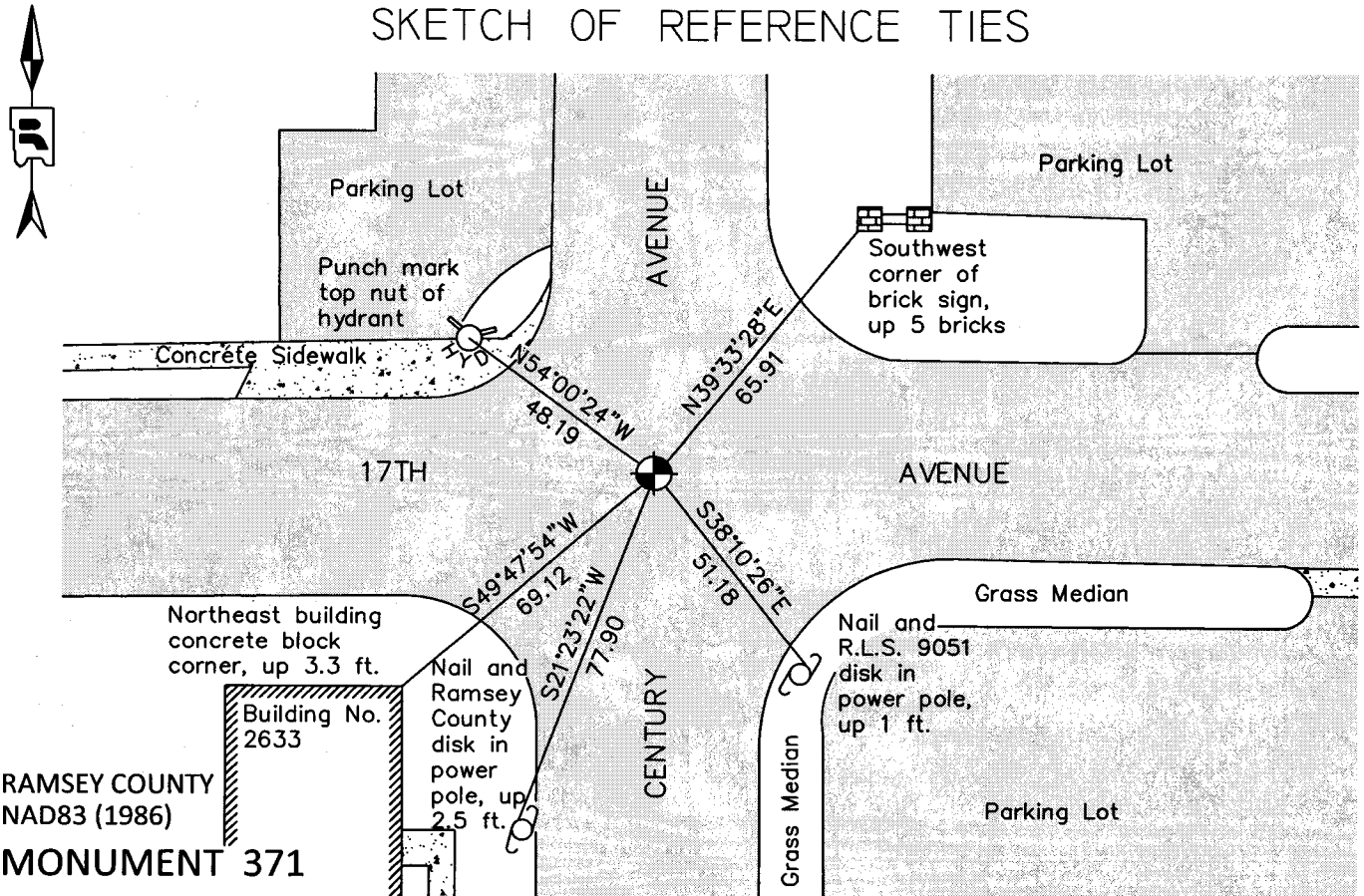
At the corner location shown on the sketch

On June 29, 2011 found a cast iron monument, down 0.05 ft. in bituminous road.

left monument as found raised/lowered monument removed monument (explain)

On _____ placed a _____

SKETCH OF REFERENCE TIES



RAMSEY COUNTY
NAD83 (1986)
MONUMENT 371

X= 603064.566 (Easting)
Y= 184147.922 (Northing)

ALL DISTANCES ARE SHOWN IN U.S. SURVEY FEET.
BEARINGS ARE FOR TIE REFERENCE PURPOSES ONLY.

Statements of evidence relative to this corner are on the following page.

I hereby certify that this document was prepared by me or under my direct supervision and that I am a duly Licensed Land Surveyor under the laws of the State of Minnesota.

Daniel D. Baar 7-24-12
Daniel D. Baar Date
Minnesota License No. 45816

- County Surveyor Land Surveyor
 Deputy County Surveyor

OFFICE OF COUNTY SURVEYOR
County of Ramsey

I hereby certify that this document was filed in the County Surveyor's office this 24th day of July, 20 12.

Craig W. Hinzman
Craig W. Hinzman, L.S.
Ramsey County Surveyor

MONUMENT 371

Northeast Corner of Section 12, Township 29 North, Range 22 West

Set post at Corner to Sections 1, 6, 7 & 12, Br. Oak 10 S85°E 42; B. Oak 8 N37°W 25; W. Oak 12 S65°W 59, October 9, 1847.

The Northeast Corner of Section 12 was fixed from stakes found in 3rd Addition to North St. Paul Proper & Castle, and also found old stake at Section Corner & Government Witness trees OK for Corner, tied it and set monument, September 22, 1897.

MNDOT Right of Way map no. 15-91 for T.H. 36 shows a "brass plug in place at Section Corner" February 19, 1958.

Found brass cap marked "Minn. H.D. Control Monument", "N.E. Cor. Sec. 12". Cap on 3/4 in. by 24 in. long solid iron; iron inside 2 in. by 5 1/2 in. iron pipe in old concrete road. Dug down 4.6 ft. and found nothing more. Set a 20 in. cast iron monument, March 10, 1976.

Checked monument, September 12, 1977.

Tied cast iron monument, November 30, 1982.

Retied monument, July 17, 1990.

Found 4 5/8 in. Washington County cast iron monument. Cement deteriorated; dug out monument and found a 20 in. cast iron monument broken off; re-cemented 4 5/8 in. cast iron monument back in place, September 17, 1999.

Tied monument, October 18, 2000.

Retied monument, June 23, 2006.

Retied a cast iron monument, down 0.05 ft. in bituminous road, June 29, 2011.