

MONUMENT 362

CERTIFICATE OF LOCATION OF GOVERNMENT CORNER

North Quarter Corner of Section 8, Township 29 North, Range 22 West, County of Ramsey, State of Minnesota.

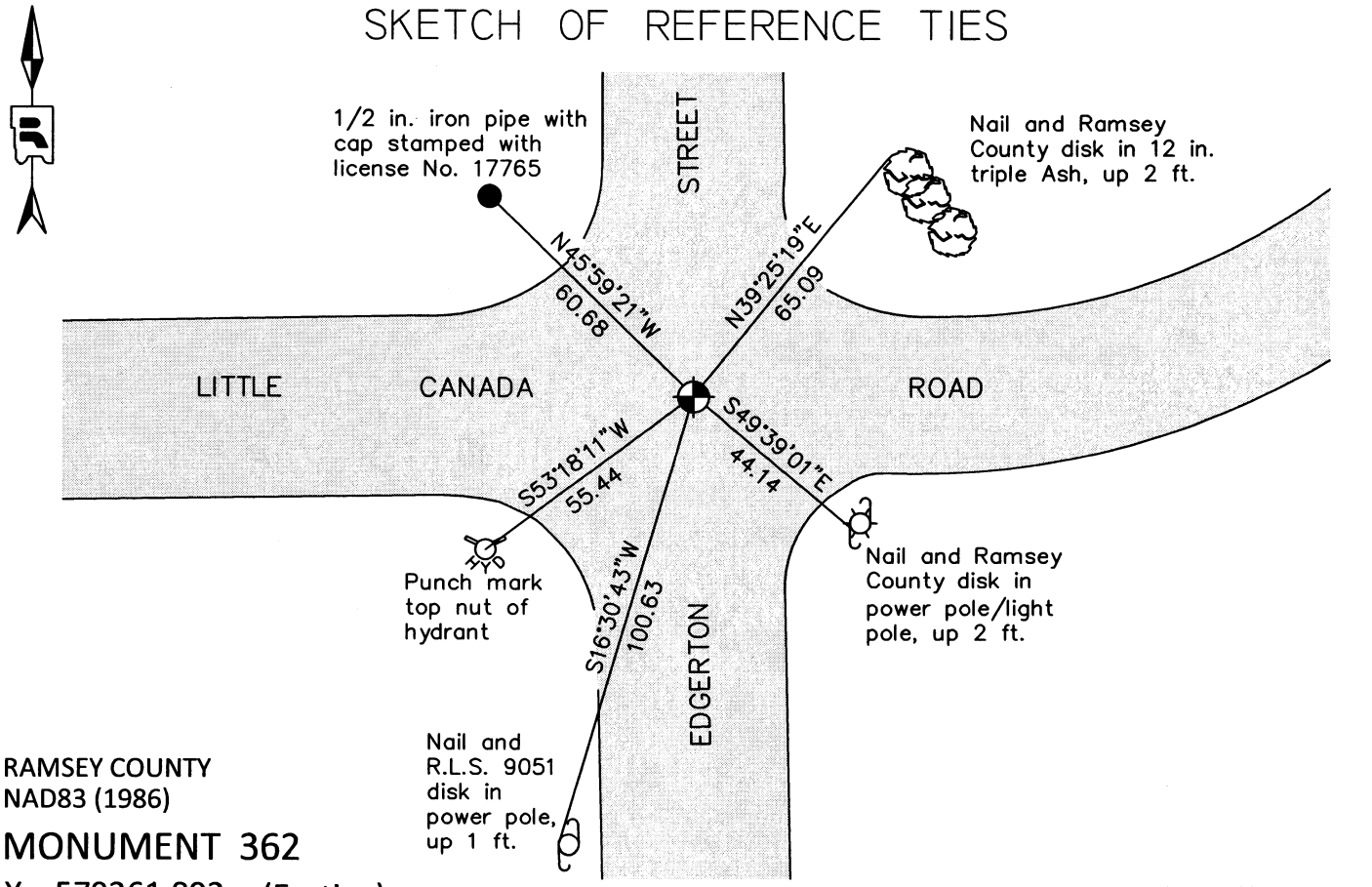
At the corner location shown on the sketch

On July 5, 2011 found a cast iron monument, down 0.05 ft. in bituminous road.

left monument as found raised/lowered monument removed monument (explain)

On _____ placed a _____

SKETCH OF REFERENCE TIES



RAMSEY COUNTY
NAD83 (1986)
MONUMENT 362

X= 579361.893 (Easting)
Y= 183895.272 (Northing)

ALL DISTANCES ARE SHOWN IN U.S. SURVEY FEET.
BEARINGS ARE FOR TIE REFERENCE PURPOSES ONLY.

Statements of evidence relative to this corner are on the following page.

I hereby certify that this document was prepared by me or under my direct supervision and that I am a duly Licensed Land Surveyor under the laws of the State of Minnesota.

Daniel D. Baar 8-1-12
Daniel D. Baar Date
Minnesota License No. 45816

County Surveyor
 Deputy County Surveyor Land Surveyor

OFFICE OF COUNTY SURVEYOR
County of Ramsey

I hereby certify that this document was filed in the County Surveyor's office this 15th day of AUGUST, 20 12.

Craig W. Hinzman
Craig W. Hinzman, L.S.
Ramsey County Surveyor

MONUMENT 362

North Quarter Corner of Section 8, Township 29 North, Range 22 West

Set 1/4 Section post, Bur Oak 14 S9°W 1.08; B. Oak 18 N65°E 1.06,
November 29, 1847.

The 1/4 Corner between Sections 5 and 8 was fixed by running up from monument at Center of Section 8, and running East on Section line North side Section 8 using sub'd stakes found and set Monument. Found old Boulder Monument at this Corner, June, 1895.

Found iron over granite monument, down 0.39 ft.; set short cast iron monument and tied, August 19, 1975.

Checked monument, May 11, 1981.

Retied monument, July 20, 1983.

Retied monument, August 16, 1990.

Short cast iron monument gone; Maintenance Department road milling project on Little Canada Road, +/-1992.

Granite monument now down 4 in.; set a cast iron cap and bolt monument, September 8, 1994.

Tied monument, December 9, 1999.

Retied monument, June 27, 2006.

Retied cast iron monument, down 0.05 ft. in bituminous road, July 5, 2011.