

MONUMENT 330

CERTIFICATE OF LOCATION OF GOVERNMENT CORNER

East Quarter Corner of Section 4, Township 29 North, Range 23 West, County of Ramsey, State of Minnesota.

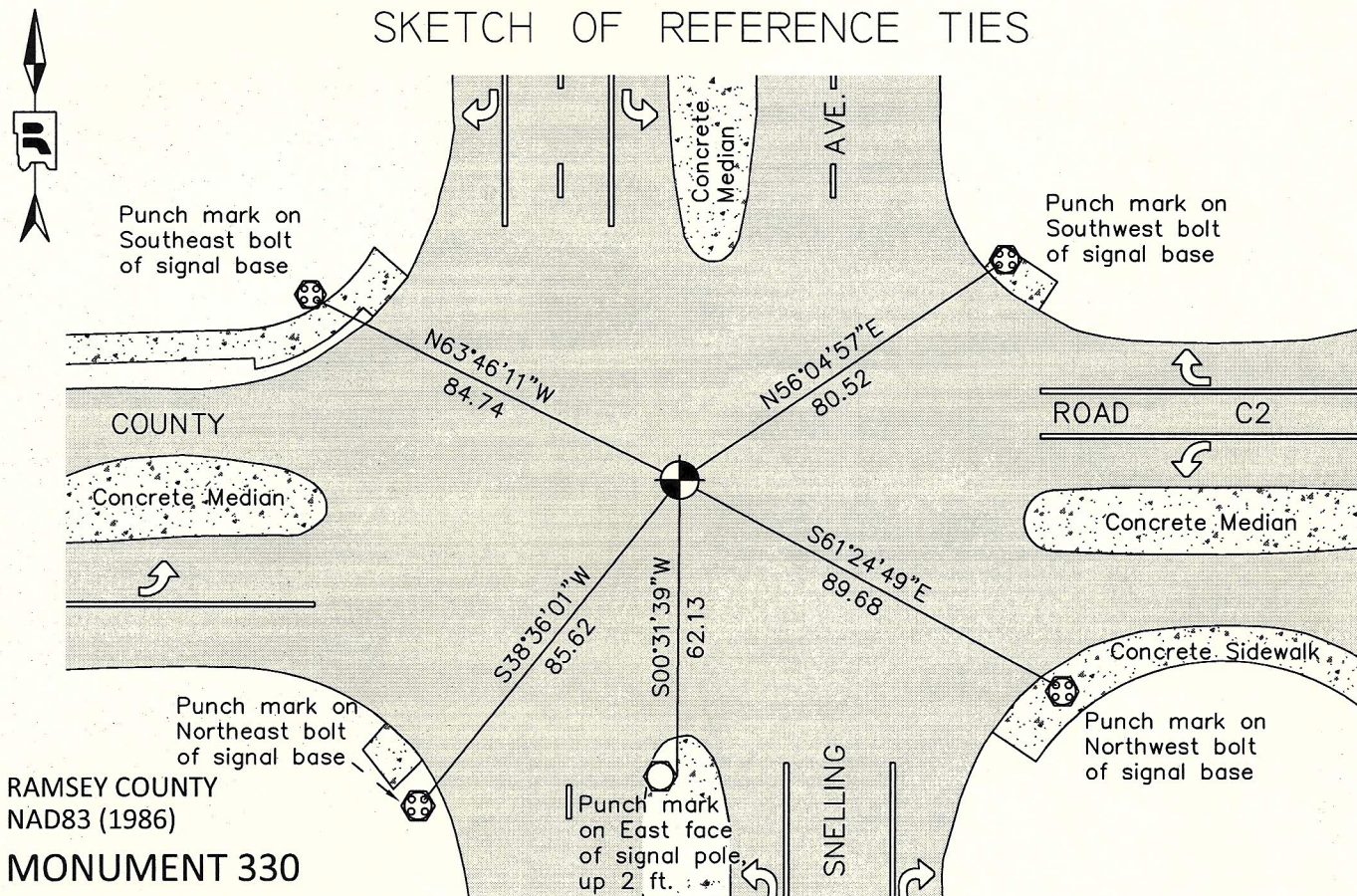
At the corner location shown on the sketch

On July 6, 2011 found a cast iron monument, down 0.4 ft. in bituminous road.

left monument as found raised/lowered monument removed monument (explain)

On _____ placed a _____

SKETCH OF REFERENCE TIES



RAMSEY COUNTY
NAD83 (1986)
MONUMENT 330

X= 555915.380 (Easting)
Y= 186419.422 (Northing)

ALL DISTANCES ARE SHOWN IN U.S. SURVEY FEET.
BEARINGS ARE FOR TIE REFERENCE PURPOSES ONLY.

Statements of evidence relative to this corner are on the following page.

I hereby certify that this document was prepared by me or under my direct supervision and that I am a duly Licensed Land Surveyor under the laws of the State of Minnesota.

Daniel D. Baar 8-10-12
Daniel D. Baar Date
Minnesota License No. 45816

- County Surveyor Land Surveyor
 Deputy County Surveyor

OFFICE OF COUNTY SURVEYOR
County of Ramsey

I hereby certify that this document was filed in the County Surveyor's office this 10th day of August, 20 12.

Craig W. Hinzman
Craig W. Hinzman, L.S.
Ramsey County Surveyor

MONUMENT 330

East Quarter Corner of Section 4, Township 29 North, Range 23 West

Set 1/4 Section Post, B. Oak 12 N87°E 106, Bur Oak 12 N62°W 121,
November 1, 1847.

Found old stake at 1/4 Corner between Sections 3 and 4 and two old Government
Witness trees, reset and retied stake and set monument, May 25, 1896.

MNDOT Right of Way map 30-43 for T.H. 51 shows a 6 in. x 6 in. conc. monument in
place.

Found a cast iron monument down 0.25 ft., June 22, 1976.

Reset monument to grade, July 26, 1976.

Checked monument, April 17, 1977.

Monument destroyed by MN/DOT, 1983.

Relocated position and placed P.K. nail, 1984.

P.K. nail removed by MN/DOT culvert, 1987.

Set a 20 in. cast iron monument down +/-2 in., September, 1994.

Tied monument down +/-0.15 ft., March 28, 2001.

Retied monument, June 28, 2006.

Retied cast iron monument, down 0.4 ft. in bituminous road, July 6, 2011.