

# MONUMENT 323

## CERTIFICATE OF LOCATION OF GOVERNMENT CORNER

Northeast Corner of Section 2, Township 29 North, Range 22 West, County of Ramsey, State of Minnesota.

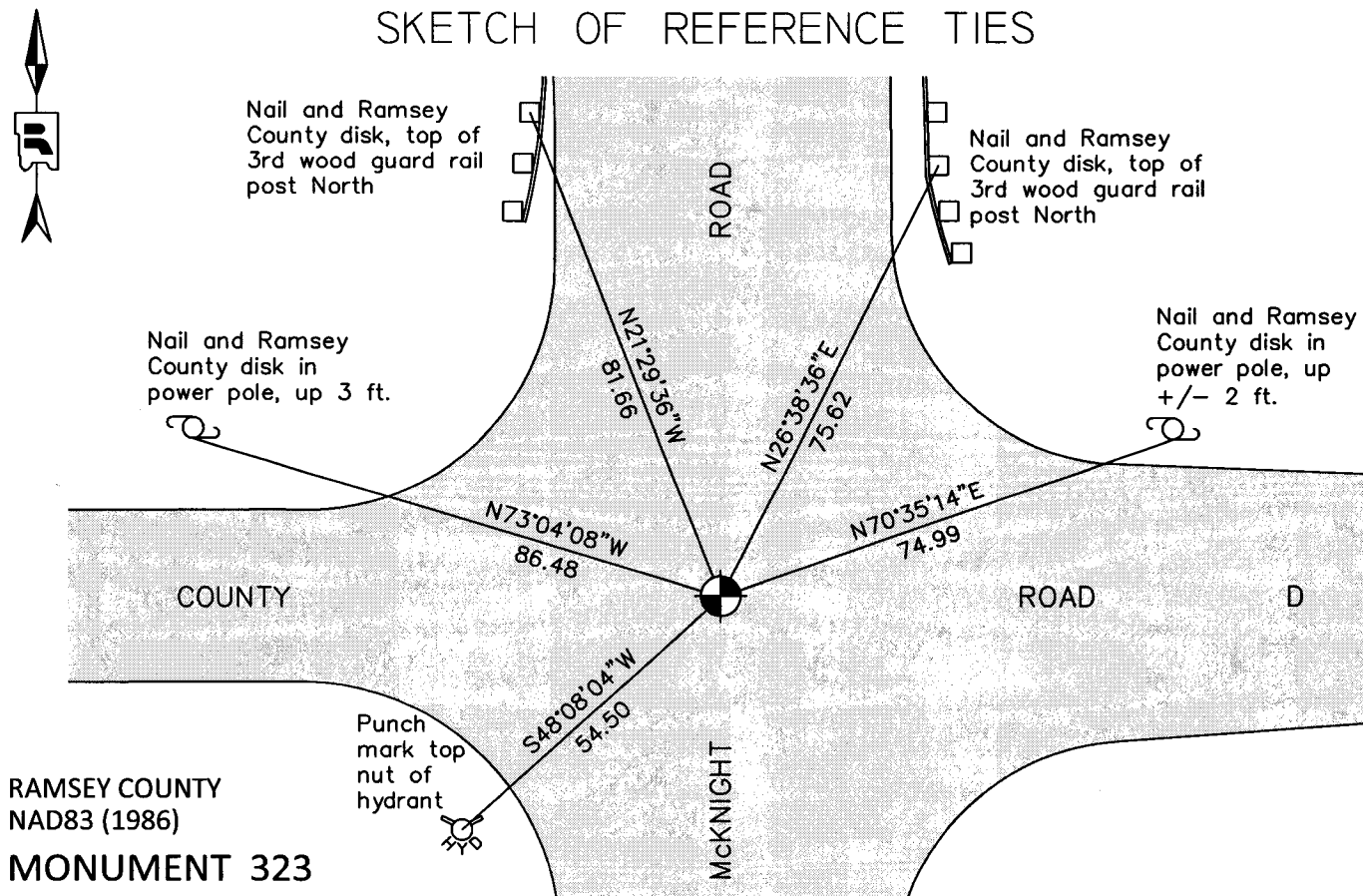
At the corner location shown on the sketch

On July 27, 2011 found a cast iron monument, within a cast iron manhole assembly.

left monument as found       raised/lowered monument       removed monument (explain)

On \_\_\_\_\_ placed a \_\_\_\_\_

### SKETCH OF REFERENCE TIES



RAMSEY COUNTY  
NAD83 (1986)  
**MONUMENT 323**

X= 597766.787 (Easting)  
Y= 189439.789 (Northing)

ALL DISTANCES ARE SHOWN IN U.S. SURVEY FEET.  
BEARINGS ARE FOR TIE REFERENCE PURPOSES ONLY.

Statements of evidence relative to this corner are on the following page.

I hereby certify that this document was prepared by me or under my direct supervision and that I am a duly Licensed Land Surveyor under the laws of the State of Minnesota.

Daniel D. Baar      7-24-12  
Daniel D. Baar      Date  
Minnesota License No. 45816

- County Surveyor       Land Surveyor  
 Deputy County Surveyor

OFFICE OF COUNTY SURVEYOR  
County of Ramsey

I hereby certify that this document was filed in the County Surveyor's office this 24<sup>th</sup> day of July, 20 12.

Craig W. Hinzman  
Craig W. Hinzman, L.S.  
Ramsey County Surveyor

# MONUMENT 323

Northeast Corner of Section 2, Township 29 North, Range 22 West

Set post at Cor. to Sec. 1, 2, 35 & 36, Br. Oak 10 N81°E 102; Br. Oak 6 S3°W 47, October 15, 1847.

In establishing the Northeast Corner of Section 2, ran straight line from Corner to Corner East and West and fixed Corner halfway, set monument July 20, 1898.

Found granite monument flush and chipped; tied, 1976.

Granite monument destroyed by construction; placed cast iron monument, July 25, 1977.

Tied monument, August 8, 1990.

Retied monument, September 22, 1999.

Removed broken cast iron monument; set new 20 in. cast iron monument within a cast iron manhole assembly, August 20, 2001.

Tied monument, June 22, 2006.

Reset a 20 in. cast iron monument within a cast iron manhole assembly, October 27, 2009.

Tied a cast iron monument, within a cast iron manhole assembly, July 27, 2011.