

MONUMENT 322

CERTIFICATE OF LOCATION OF GOVERNMENT CORNER

North Quarter Corner of Section 2, Township 29 North, Range 22 West, County of Ramsey, State of Minnesota.

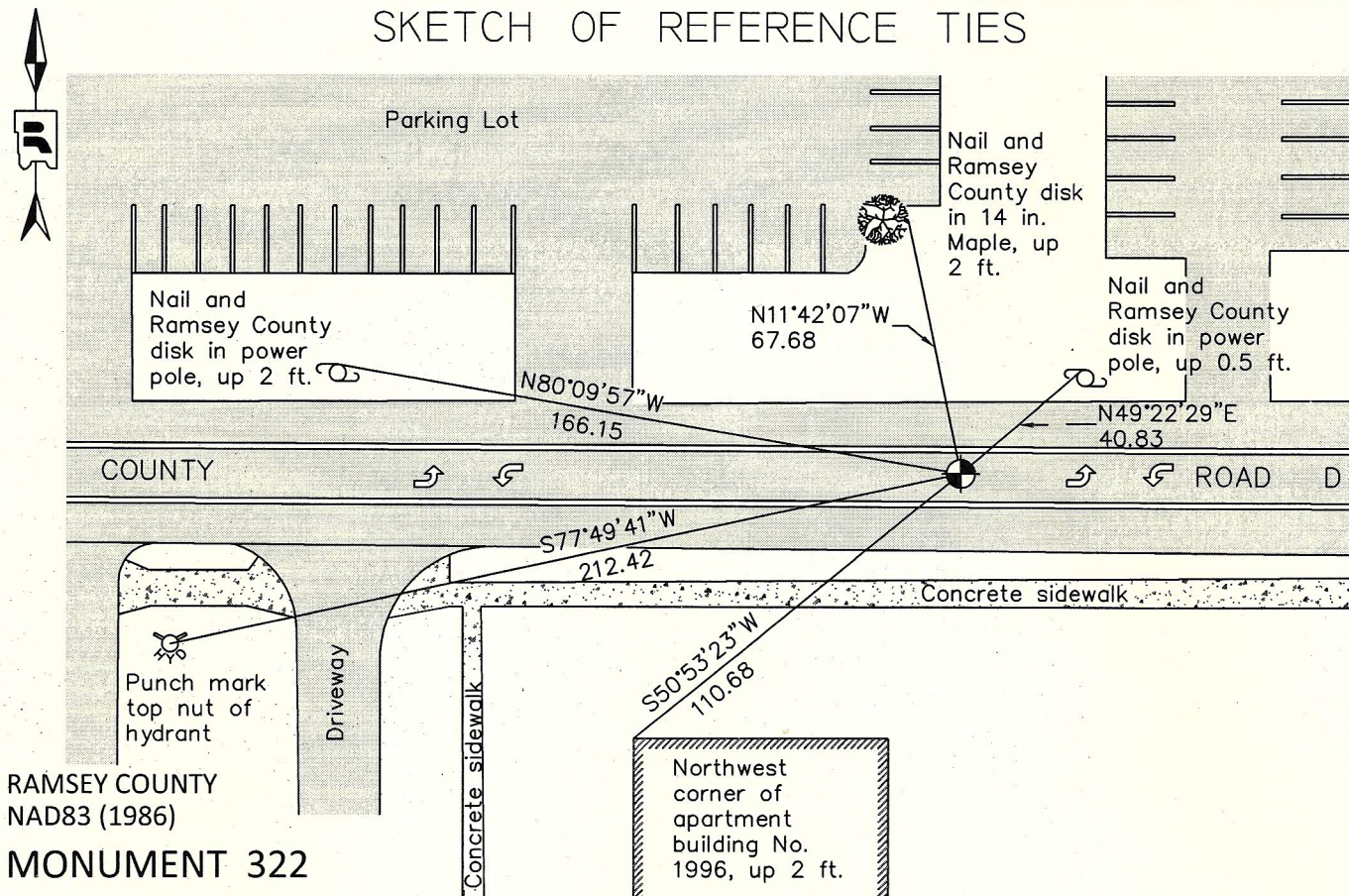
At the corner location shown on the sketch

On November 4, 2011 found a cast iron monument within a cast iron manhole assembly.

left monument as found raised/lowered monument removed monument (explain)

On _____ placed a _____

SKETCH OF REFERENCE TIES



RAMSEY COUNTY
NAD83 (1986)
MONUMENT 322

X= 595129.806 (Easting)
Y= 189426.836 (Northing)

ALL DISTANCES ARE SHOWN IN U.S. SURVEY FEET.
BEARINGS ARE FOR TIE REFERENCE PURPOSES ONLY.

Statements of evidence relative to this corner are on the following page.

I hereby certify that this document was prepared by me or under my direct supervision and that I am a duly Licensed Land Surveyor under the laws of the State of Minnesota.

Daniel D. Baar 8-15-12
Daniel D. Baar Date
Minnesota License No. 45816

- County Surveyor
 Deputy County Surveyor Land Surveyor

OFFICE OF COUNTY SURVEYOR
County of Ramsey

I hereby certify that this document was filed in the County Surveyor's office this 15th day of August, 20 12.

Craig W. Hinzman
Craig W. Hinzman, L.S.
Ramsey County Surveyor

MONUMENT 322

North Quarter Corner of Section 2, Township 29 North, Range 22 West

Set post at qr. Section Corner, B. Oak 24 N12°E 53, Br. Oak 10 S43°E 98,
October 15, 1847.

In establishing the 1/4 Corner between Sec. 2, T 29, R 22, and Sec. 35, T 30, R 22,
found old Government Witness stump and fixed 1/4 Corner and set Monument,
April, 1895.

Found granite monument down 0.34 ft.; set cap, 1975.

Checked monument, June 24, 1977.

Tied monument, April 15, 1988.

Checked, August 8, 1990.

Retied monument, September 23, 1999.

Tied monument for Maplewood reconstruction, April 29, 2002.

Set 20 in. cast iron monument down 18 in. within a cast iron manhole assembly,
August 16, 2002.

Tied monument, June 22, 2006.

Retied a cast iron monument within a cast iron manhole assembly,
November 4, 2011.