

# MONUMENT 320

## CERTIFICATE OF LOCATION OF GOVERNMENT CORNER

North Quarter Corner of Section 3, Township 29 North, Range 22 West, County of Ramsey, State of Minnesota.

At the corner location shown on the sketch

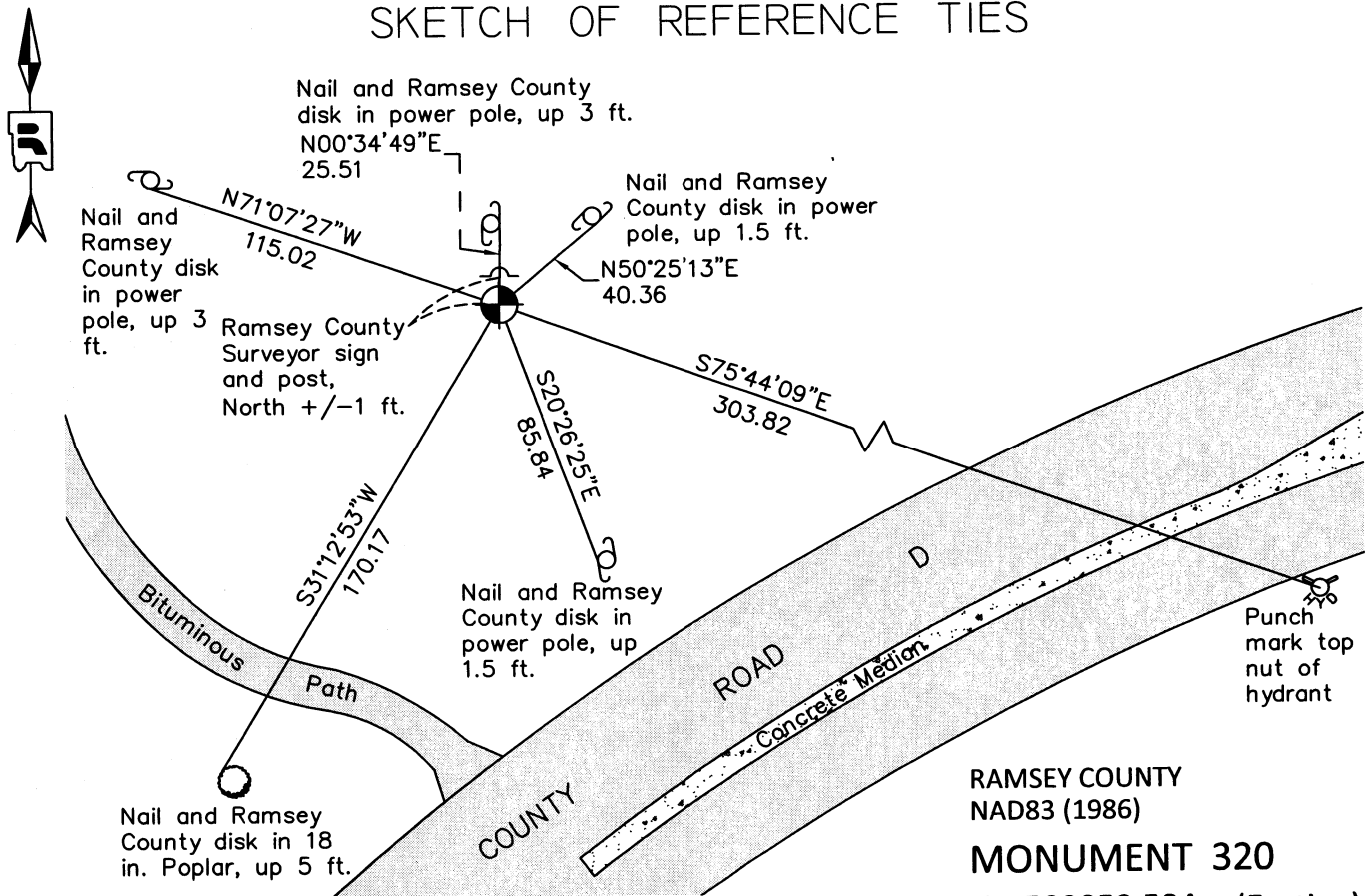
On July 27, 2011 found a cast iron monument, down 1 ft.

---

left monument as found       raised/lowered monument       removed monument (explain)

On \_\_\_\_\_ placed a \_\_\_\_\_

### SKETCH OF REFERENCE TIES



RAMSEY COUNTY  
NAD83 (1986)

### MONUMENT 320

X= 589852.584 (Easting)  
Y= 189406.847 (Northing)

ALL DISTANCES ARE SHOWN IN U.S. SURVEY FEET.  
BEARINGS ARE FOR TIE REFERENCE PURPOSES ONLY.

Statements of evidence relative to this corner are on the following page.

I hereby certify that this document was prepared by me or under my direct supervision and that I am a duly Licensed Land Surveyor under the laws of the State of Minnesota.

Daniel D. Baar      8-1-12  
Daniel D. Baar      Date  
Minnesota License No. 45816

- County Surveyor       Land Surveyor  
 Deputy County Surveyor

OFFICE OF COUNTY SURVEYOR  
County of Ramsey

I hereby certify that this document was filed in the County Surveyor's office this 1st day of AUGUST, 20 12.

Craig W. Hinzman  
Craig W. Hinzman, L.S.  
Ramsey County Surveyor

# MONUMENT 320

North Quarter Corner of Section 3, Township 29 North, Range 22 West

Set post at qr. Sec. Corner, Br. Oak 8, S78°W 200, October 15, 1847.

In establishing the 1/4 Corner on the North of Section 3, found old stake at Section Corner and also found iron stake in Dorle Park, July 18, 1898.

Set monument August 16, 1898.

Found granite monument, July, 1974.

Placed 20 in. cast iron monument, June 16, 1977.

Tied monument, June 4, 1990.

Monument removed by snow removal equipment in 1992; replaced with 20 in. cast iron monument and set sign and post +/-0.5 ft. north, June 4, 1992.

Tied monument, September 21, 1999.

Retied monument, June 22, 2006.

Retied a cast iron monument, down 1ft., July 27, 2011.