

# MONUMENT 32

## CERTIFICATE OF LOCATION OF GOVERNMENT CORNER

East Quarter Corner of Section 4, Township 30 North, Range 23 West, County of Ramsey, State of Minnesota.

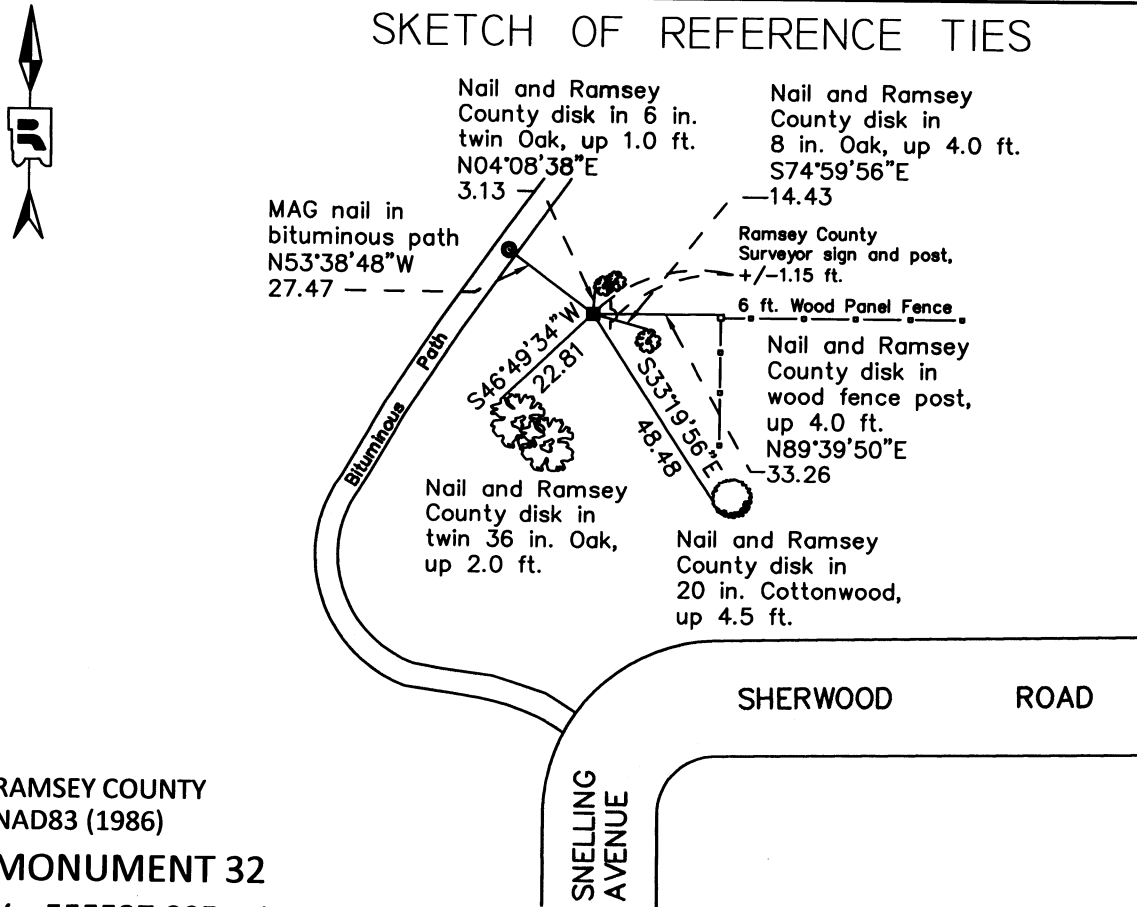
At the corner location shown on the sketch

On October 19, 2011 found a granite monument, flush.

left monument as found       raised/lowered monument       removed monument (explain)

On \_\_\_\_\_ placed a \_\_\_\_\_

### SKETCH OF REFERENCE TIES



RAMSEY COUNTY  
NAD83 (1986)  
**MONUMENT 32**

X= 55527.895 (Easting)  
Y= 218244.187 (Northing)

ALL DISTANCES ARE SHOWN IN U.S. SURVEY FEET.  
BEARINGS ARE FOR TIE REFERENCE PURPOSES ONLY.

Statements of evidence relative to this corner are on the following page.

I hereby certify that this document was prepared by me or under my direct supervision and that I am a duly Licensed Land Surveyor under the laws of the State of Minnesota.

Daniel D. Baar      9-5-12  
Daniel D. Baar      Date  
Minnesota License No. 45816

County Surveyor       Land Surveyor  
 Deputy County Surveyor

OFFICE OF COUNTY SURVEYOR  
County of Ramsey

I hereby certify that this document was filed in the County Surveyor's office this 5th day of September, 20 12.

Craig W. Hinzman  
Craig W. Hinzman, L.S.  
Ramsey County Surveyor

# MONUMENT 32

East Quarter Corner of Section 4, Township 30 North, Range 23 West

Set 1/4 Section post, Bur Oak 10 N45°W 41, "Do" (Bur Oak) 10 S59°W 95, December 11, 1847.

In establishing the 1/4 Corner between Section 3 and 4, found one Government tree, and also an old stake at the 1/4 corner, tied it and set monument, August, 1900.

Found granite monument, up 0.1 ft., and tied, November 27, 1974.

Placed sign and post +/-1 ft. east of monument, November 7, 1991.

Retied granite monument, March 21, 2001.

Retied granite monument, August 16, 2006.

Retied granite monument, flush, October 19, 2011.