

MONUMENT 317

CERTIFICATE OF LOCATION OF GOVERNMENT CORNER

Northeast Corner of Section 5, Township 29 North, Range 22 West, County of Ramsey, State of Minnesota.

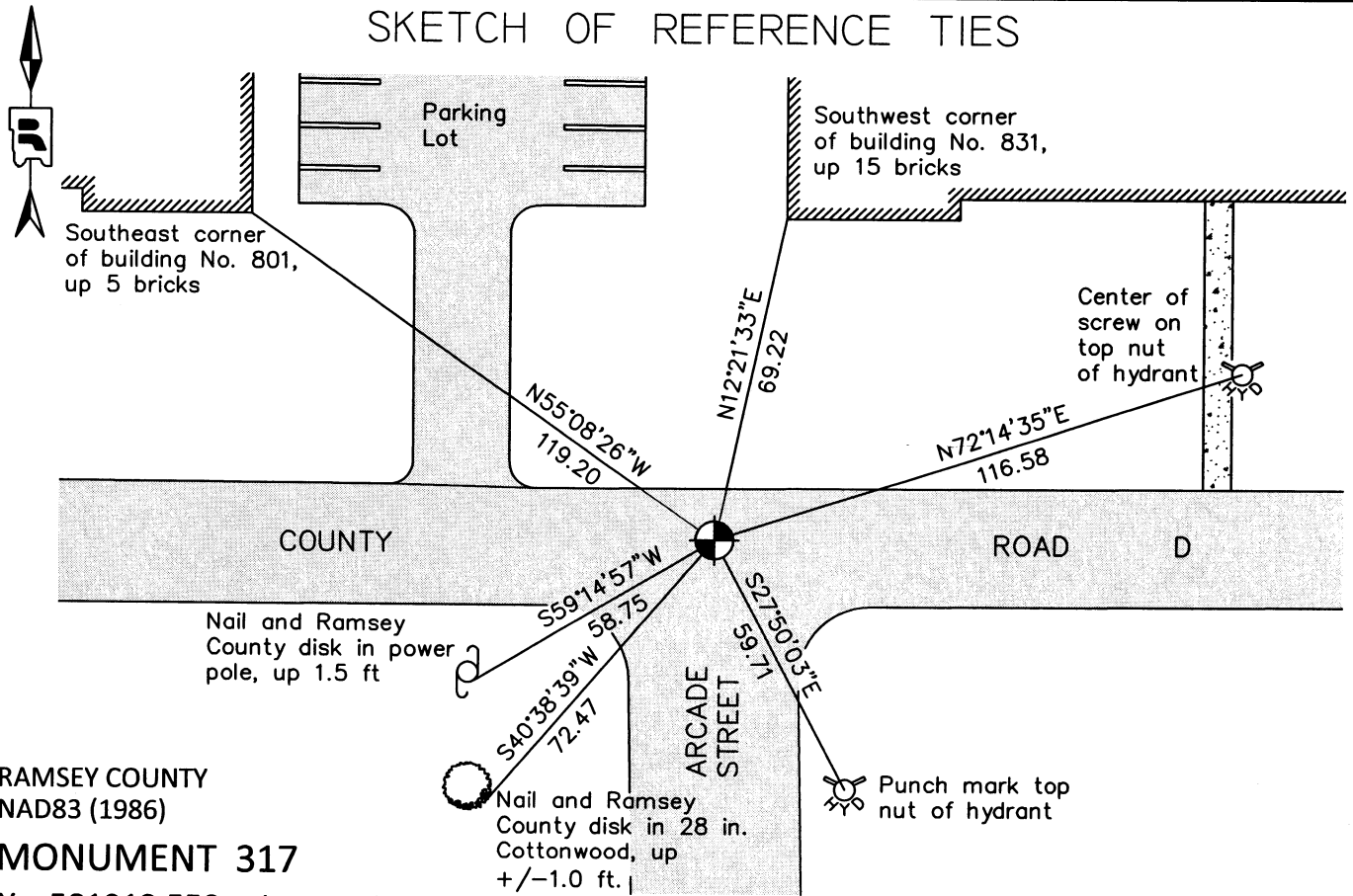
At the corner location shown on the sketch

On July 29, 2011 found a cast iron monument in bituminous road, down +/-0.30 ft.

left monument as found raised/lowered monument removed monument (explain)

On _____ placed a _____

SKETCH OF REFERENCE TIES



RAMSEY COUNTY
NAD83 (1986)
MONUMENT 317

X= 581913.558 (Easting)
Y= 189407.620 (Northing)

ALL DISTANCES ARE SHOWN IN U.S. SURVEY FEET.
BEARINGS ARE FOR TIE REFERENCE PURPOSES ONLY.

Statements of evidence relative to this corner are on the following page.

I hereby certify that this document was prepared by me or under my direct supervision and that I am a duly Licensed Land Surveyor under the laws of the State of Minnesota.

Daniel D. Baar 7-31-12
Daniel D. Baar Date
Minnesota License No. 45816

- County Surveyor
 Deputy County Surveyor Land Surveyor

OFFICE OF COUNTY SURVEYOR
County of Ramsey

I hereby certify that this document was filed in the County Surveyor's office this 31st day of JULY, 20 12.

Craig W. Hinzman
Craig W. Hinzman, L.S.
Ramsey County Surveyor

MONUMENT 317

Northeast Corner of Section 5, Township 29 North, Range 22 West

Set post at Corner to Sections 4, 5, 32, 33, B. Oak 10 N40°E 75, Br. Oak 8 S57°E 49, Br. Oak 8 N75°W 12, Br. Oak 10 S68°W 42, October 16, 1847.

The Northeast Corner of Section 5 was fixed in 1895, found old stake which checked the line of old fences, Government witness trees gone, tied it and set monument.

Found a granite monument, down 0.2 ft.; placed a cast iron cap and bolt monument in concrete over granite monument, May 24, 1974.

Tied monument, September 18, 1974.

Checked monument, June 24, 1977.

Checked monument, down 0.25 ft., August 8, 1990.

Retied monument, September 20, 1999.

Retied monument, June 19, 2006.

Retied a cast iron monument, in bituminous road down +/-0.30 ft., July 29, 2011.