

MONUMENT 294N

CERTIFICATE OF LOCATION OF GOVERNMENT CORNER

Witness Monument North of the East Quarter Corner of Section 33, Township 30 North, Range 22 West, County of Ramsey, State of Minnesota.

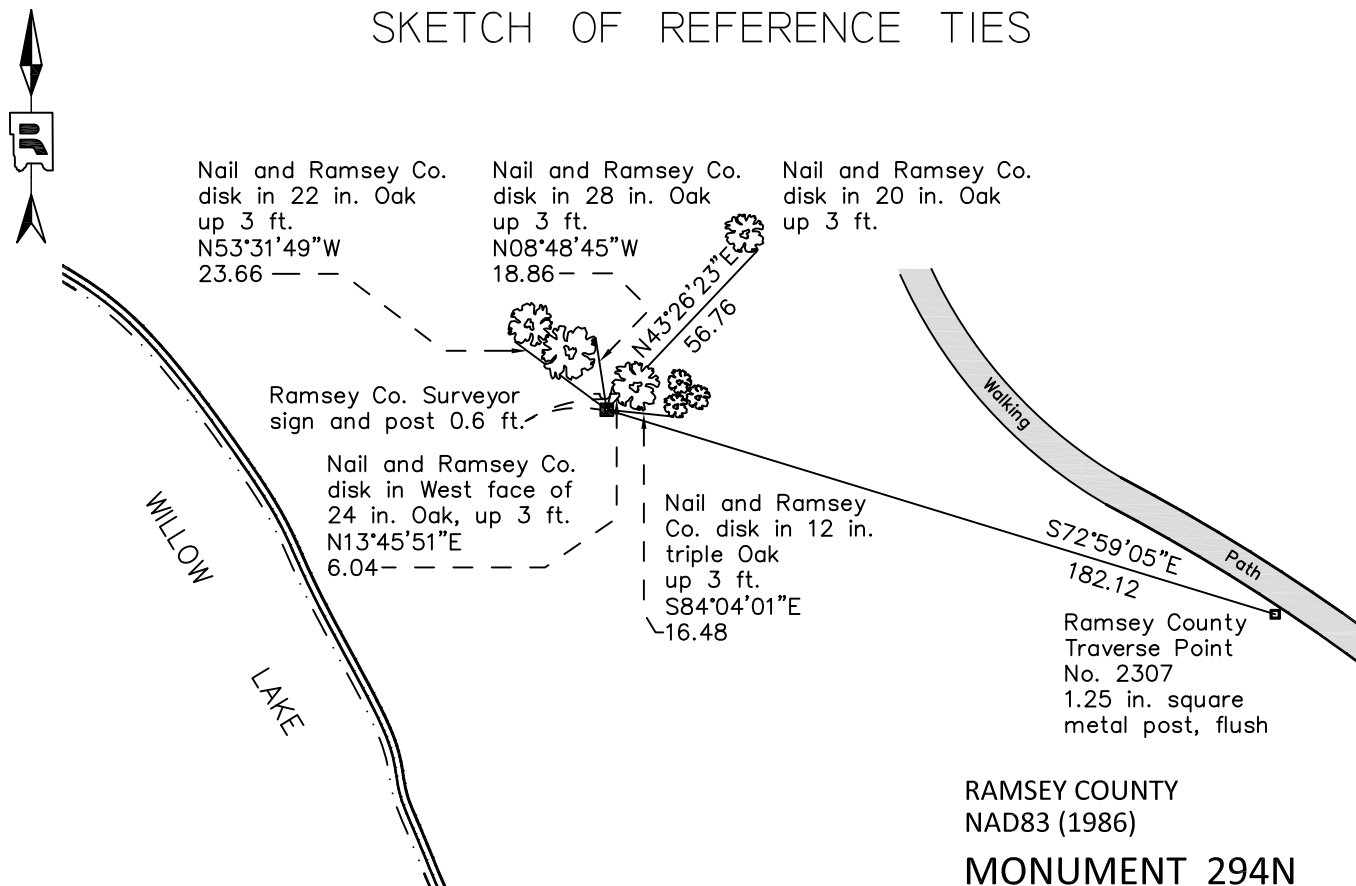
At the corner location shown on the sketch

On October 20, 2011 found an 8 in. by 8 in. granite monument with drill hole, flush.

left monument as found raised/lowered monument removed monument (explain)

On _____ placed a _____

SKETCH OF REFERENCE TIES



RAMSEY COUNTY
NAD83 (1986)
MONUMENT 294N

ALL DISTANCES ARE SHOWN IN U.S. SURVEY FEET.
BEARINGS ARE FOR TIE REFERENCE PURPOSES ONLY.

X= 587205.171 (Easting)
Y= 192322.754 (Northing)

Statements of evidence relative to this corner are on the following page.

I hereby certify that this document was prepared by me or under my direct supervision and that I am a duly Licensed Land Surveyor under the laws of the State of Minnesota.

Daniel D. Baar Date _____
Minnesota License No. 45816

- County Surveyor Land Surveyor
 Deputy County Surveyor

OFFICE OF COUNTY SURVEYOR
County of Ramsey

I hereby certify that this document was filed in the County Surveyor's office this _____ day of _____, 20 ____.

Craig W. Hinzman, L.S.
Ramsey County Surveyor

MONUMENT 294N

Ramsey County Re-survey book shows a monument set at this location, +/-1900.

Found a granite monument, flush with ground; tied, July 1, 1974.

Set a sign and post, September 19, 1996.

Retied monument, October 20, 2011.