

# MONUMENT 292

## CERTIFICATE OF LOCATION OF GOVERNMENT CORNER

East Quarter Corner of Section 32, Township 30 North, Range 22 West, County of Ramsey, State of Minnesota.

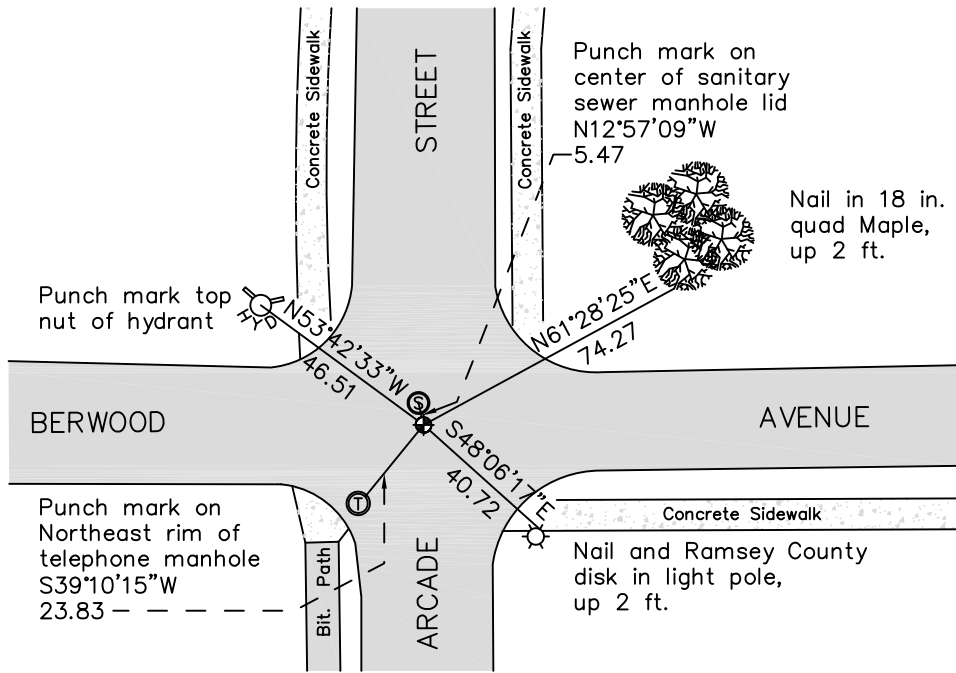
At the corner location shown on the sketch

On August 15, 2011 found a cast iron monument, flush.

left monument as found       raised/lowered monument       removed monument (explain)

On \_\_\_\_\_ placed a \_\_\_\_\_

### SKETCH OF REFERENCE TIES



RAMSEY COUNTY  
NAD83 (1986)

### MONUMENT 292

X= 581885.714 (Easting)  
Y= 192039.653 (Northing)

ALL DISTANCES ARE SHOWN IN U.S. SURVEY FEET.  
BEARINGS ARE FOR TIE REFERENCE PURPOSES ONLY.

Statements of evidence relative to this corner are on the following page.

I hereby certify that this document was prepared by me or under my direct supervision and that I am a duly Licensed Land Surveyor under the laws of the State of Minnesota.

\_\_\_\_\_  
Daniel D. Baar      Date  
Minnesota License No. 45816

County Surveyor       Land Surveyor

Deputy County Surveyor

OFFICE OF COUNTY SURVEYOR  
County of Ramsey

I hereby certify that this document was filed in the County Surveyor's office this \_\_\_\_\_ day of \_\_\_\_\_, 20 \_\_\_\_.

\_\_\_\_\_  
Craig W. Hinzman, L.S.  
Ramsey County Surveyor

## MONUMENT 292

In establishing the 1/4 Corner between Sections 32 and 33, found one Government tree standing and one old stump hole of Government tree, November 5, 1900.

Set monument, November 21, 1900.

Granite monument missing, April, 1974.

Placed a cast iron monument, by using M.W. Carley and Associates, and Frank Kvidera (Co. Hwy. Dept.) ties, May 9, 1974.

Tied monument, February 12, 1991.

Monument broken off by City construction of Arcade Street to the north. Dug down and found bottom half of (Harrison) monument, tied and set P.K. nails, May 6, 1996.

Set a 20 inch cast iron monument, August 5, 1997.

Tied monument, August 29, 2006.

Concrete maintenance, September 26, 2006.

Retied monument, August 15, 2011.