

MONUMENT 211

CERTIFICATE OF LOCATION OF GOVERNMENT CORNER

Northeast Corner of Section 26, Township 30 North, Range 23 West, County of Ramsey, State of Minnesota.

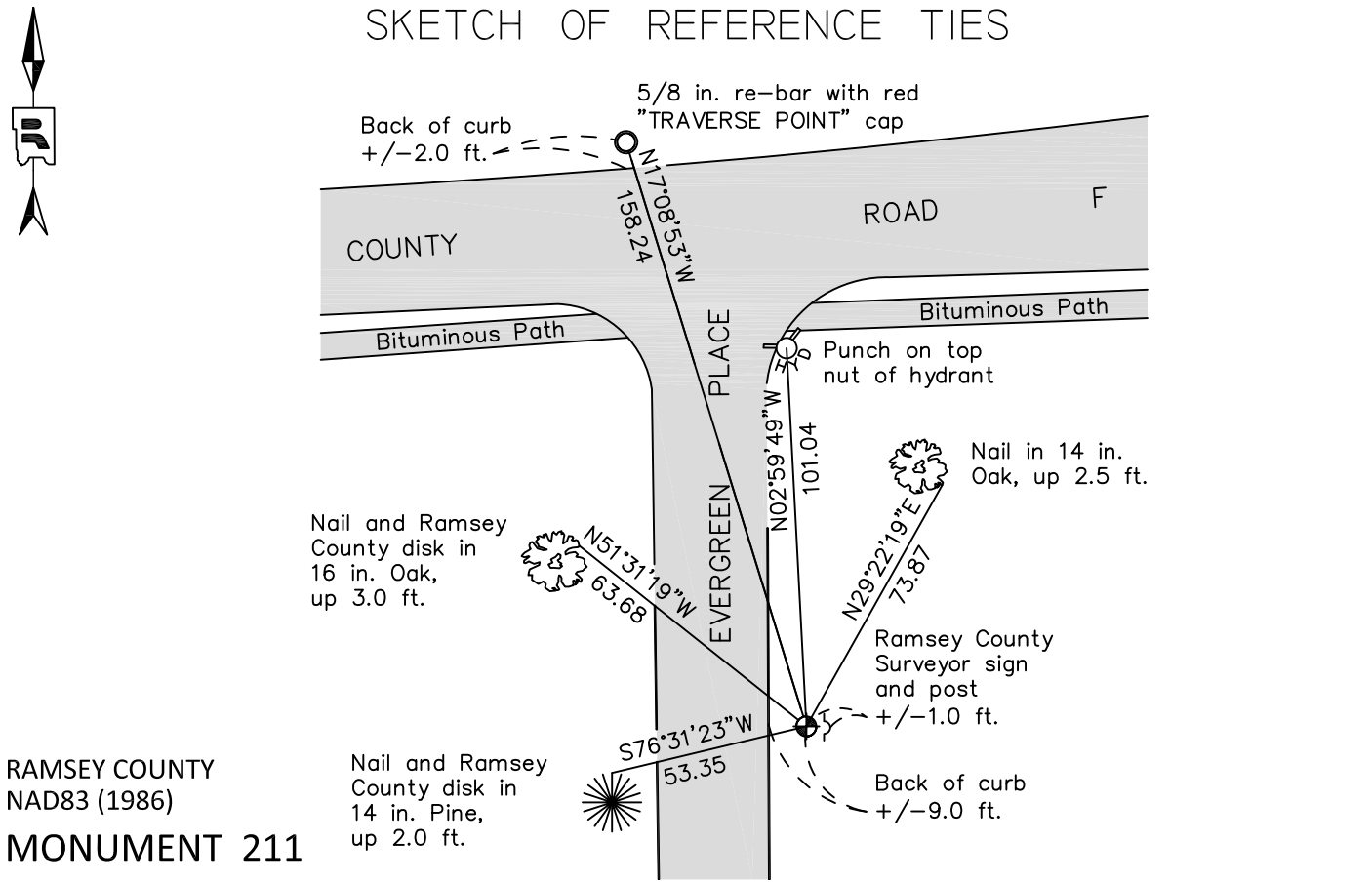
At the corner location shown on the sketch

On August 18, 2011 found a cast iron monument, down 0.9 ft.

left monument as found raised/lowered monument removed monument (explain)

On _____ placed a _____

SKETCH OF REFERENCE TIES



RAMSEY COUNTY
NAD83 (1986)

MONUMENT 211

X= 566288.558 (Easting)
Y= 199887.754 (Northing)

ALL DISTANCES ARE SHOWN IN U.S. SURVEY FEET.
BEARINGS ARE FOR TIE REFERENCE PURPOSES ONLY.

Statements of evidence relative to this corner are on the following page.

I hereby certify that this document was prepared by me or under my direct supervision and that I am a duly Licensed Land Surveyor under the laws of the State of Minnesota.

_____ Date
Daniel D. Baar
Minnesota License No. 45816

County Surveyor
 Deputy County Surveyor Land Surveyor

OFFICE OF COUNTY SURVEYOR
County of Ramsey

I hereby certify that this document was filed in the County Surveyor's office this _____ day of _____, 20 ____.

Craig W. Hinzman, L.S.
Ramsey County Surveyor

MONUMENT 211

In establishing the Northeast Corner of Section 26, measured East from monument at 1/4 Corner between Section 23 and 26 - 2641.40 feet, which appeared to be about correct according to all evidence, Government witness tree gone, fixed Corner, tied and set monument, December 5, 1896.

Found a granite monument, down 1 in., tied, October 23, 1974.

Monument destroyed; replaced with a 20 in. cast iron monument, June 13, 1988.

Tied monument, down 0.6 ft., May 10, 1989.

Retied monument, November 25, 2002.

Retied monument, June 19, 2006.

Retied cast iron monument, down 0.9 ft. and set a Ramsey County Surveyor sign and post +/-1 ft. east of monument, August 18, 2011.