

# MONUMENT 187

## CERTIFICATE OF LOCATION OF SECTION SUBDIVISION MONUMENT

Center of Section 24, Township 30 North, Range 23 West, County of Ramsey, State of Minnesota.

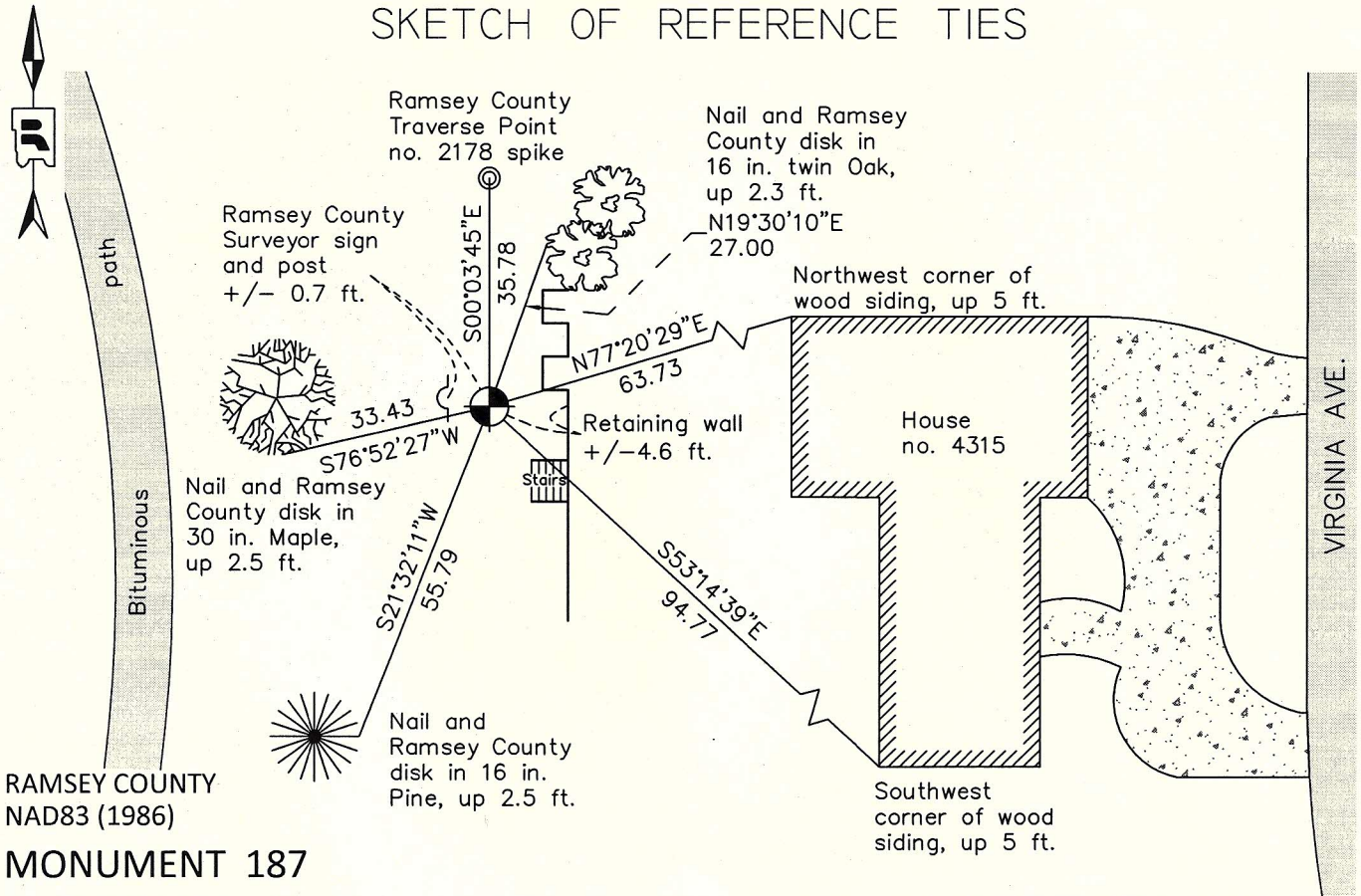
At the corner location shown on the sketch

On September 30, 2011 found a cast iron monument down +/-0.9 ft.

left monument as found       raised/lowered monument       removed monument (explain)

On \_\_\_\_\_ placed a \_\_\_\_\_

### SKETCH OF REFERENCE TIES



RAMSEY COUNTY  
NAD83 (1986)

### MONUMENT 187

X= 568906.444 (Easting)  
Y= 202522.303 (Northing)

ALL DISTANCES ARE SHOWN IN U.S. SURVEY FEET.  
BEARINGS ARE FOR TIE REFERENCE PURPOSES ONLY.

Statements of evidence relative to this corner are on the following page.

I hereby certify that this document was prepared by me or under my direct supervision and that I am a duly Licensed Land Surveyor under the laws of the State of Minnesota.

Daniel D. Baar      8-10-12  
Daniel D. Baar      Date  
Minnesota License No. 45816

- County Surveyor  
 Deputy County Surveyor       Land Surveyor

OFFICE OF COUNTY SURVEYOR  
County of Ramsey

I hereby certify that this document was filed in the County Surveyor's office this 10th day of August, 20 12.

Craig W. Hinzman  
Craig W. Hinzman, L.S.  
Ramsey County Surveyor

# MONUMENT 187

Center of Section 24, Township 30 North, Range 23 West

Fixed the Center of Section 24 by Intersection, March 9, 1899.

Set Monument November, 1899.

Checked monument March, 1956.

Tied monument January, 1965.

Retied monument April, 1966.

Plat of BLAINE OAKS 3RD ADD. shows a cast iron monument at this location, +/-1973.

20 in. cast iron monument placed before October, 1982.

Monument tied, October, 1987.

Placed sign and post West 0.7 ft., October 19, 1990.

Retied monument down +/-0.5 ft., December 6, 2002.

Retied a cast iron monument down +/-0.9 ft., September 30, 2011.