

MONUMENT 184

CERTIFICATE OF LOCATION OF GOVERNMENT CORNER

East Quarter Corner of Section 22, Township 30 North, Range 23 West, County of Ramsey, State of Minnesota.

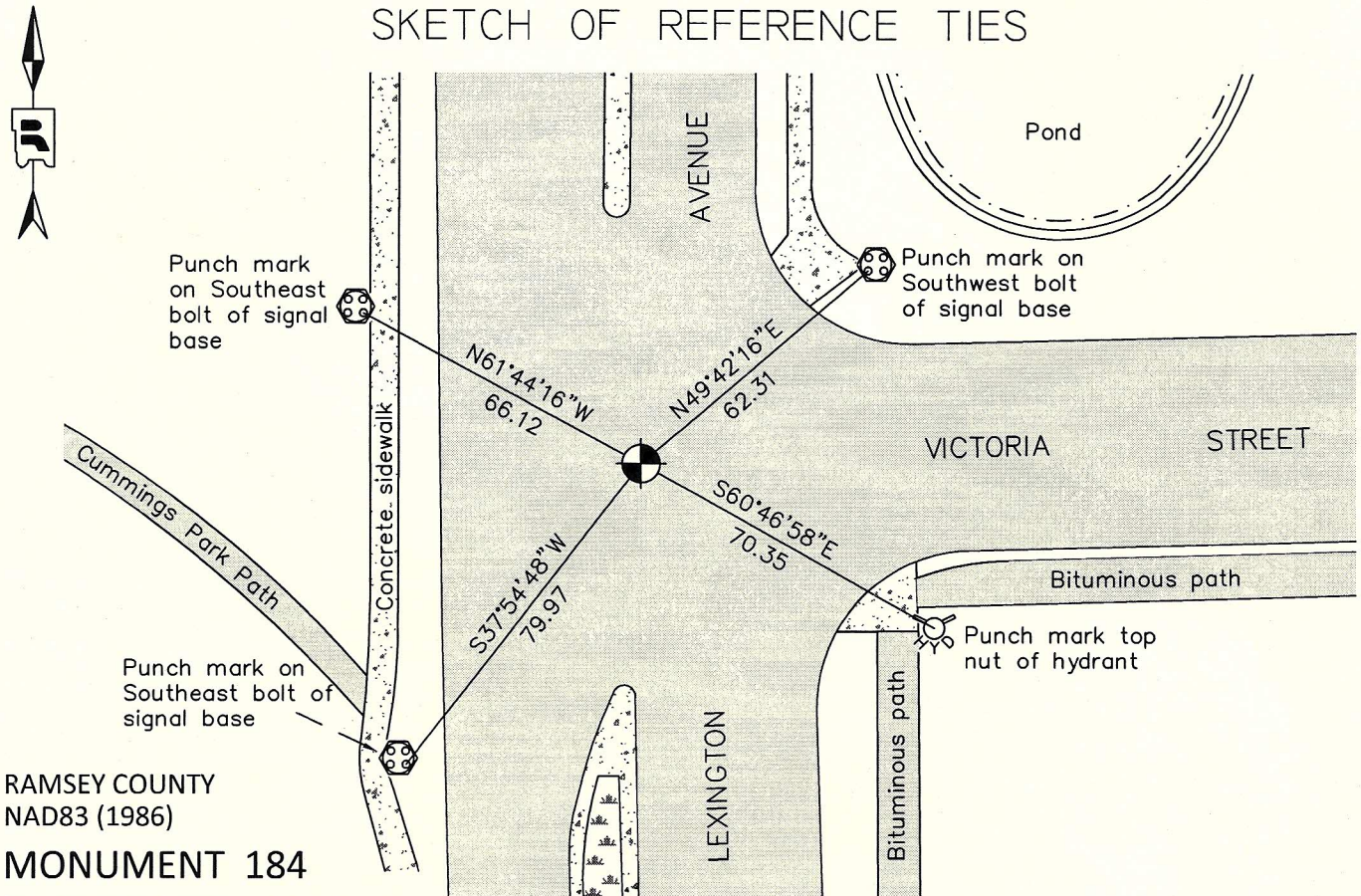
At the corner location shown on the sketch

On September 7, 2011 found a cast iron monument within a cast iron manhole assembly.

left monument as found raised/lowered monument removed monument (explain)

On _____ placed a _____

SKETCH OF REFERENCE TIES



RAMSEY COUNTY
NAD83 (1986)

MONUMENT 184

X= 560991.657 (Easting)
Y= 202479.325 (Northing)

ALL DISTANCES ARE SHOWN IN U.S. SURVEY FEET.
BEARINGS ARE FOR TIE REFERENCE PURPOSES ONLY.

Statements of evidence relative to this corner are on the following page.

I hereby certify that this document was prepared by me or under my direct supervision and that I am a duly Licensed Land Surveyor under the laws of the State of Minnesota.

Daniel D. Baar 8-15-12
Daniel D. Baar Date
Minnesota License No. 45816

- County Surveyor
 Deputy County Surveyor Land Surveyor

OFFICE OF COUNTY SURVEYOR
County of Ramsey

I hereby certify that this document was filed in the County Surveyor's office this 15th day of August, 20 12.

Craig W. Hinzman
Craig W. Hinzman, L.S.
Ramsey County Surveyor

MONUMENT 184

East Quarter Corner of Section 22, Township 30 North, Range 23 West

Set 1/4 Section post, W. Oak 14 N85°W 81, "Do" (W. Oak) 15 N89°E 1.45, December 16, 1847.

In establishing the 1/4 Corner between Sections 22 and 23, found one Government witness stump and fixed Corner which checks the line of fence running West. Retied it and fixed Corner, December 8, 1896.

Set Monument May 28, 1897.

Checked granite monument, November, 1943.

Tied granite monument, January, 1946.

Tied granite monument, August, 1965.

Found iron in concrete, granite monument down 0.54 ft.; set short (4 3/8 in.) cast iron monument, July 17, 1975.

Tied monument, July 28, 1975.

Retied monument flush, January 22, 1992.

Retied monument flush, December 2, 1998.

Monument removed for construction, August, 2005.

Reset short (4 3/8 in.) cast iron monument, in concrete, down 9 in. within a cast iron manhole assembly, May 24, 2006.

Tied monument, June 13, 2006.

Retied a cast iron monument within a cast iron manhole assembly, September 7, 2011.