

MONUMENT 123E

CERTIFICATE OF LOCATION OF GOVERNMENT CORNER

Meander Corner No. 2, Section 12, Township 30 North, Range 22 West, County of Ramsey, State of Minnesota.

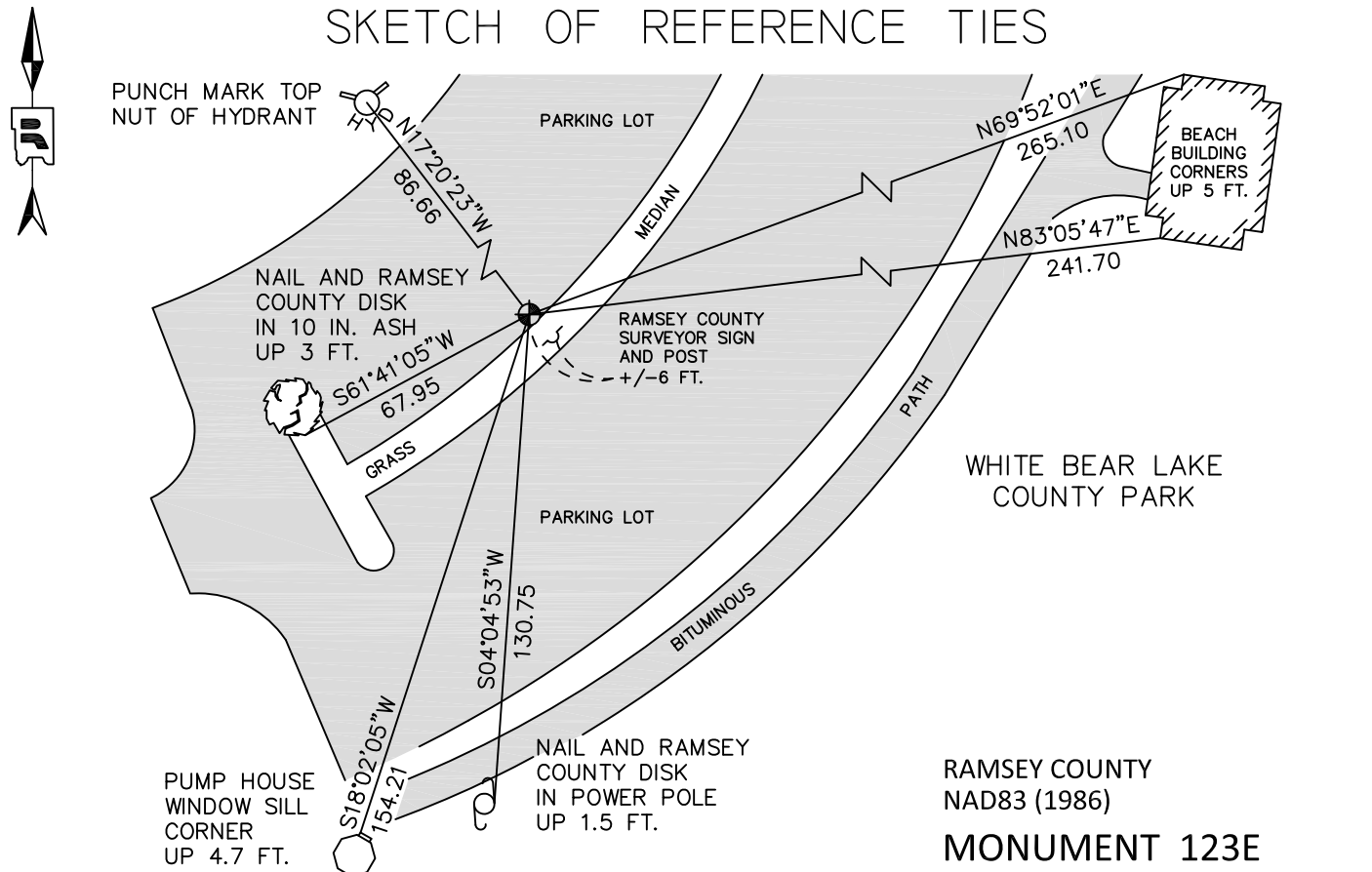
At the corner location shown on the sketch

On May 19, 2011 found a cast iron monument with top broken off.

left monument as found raised/lowered monument removed monument (explain)

On July 26, 2011 placed a 4 5/8 in. cast iron monument over the broken cast iron monument,
flush in bituminous parking lot.

SKETCH OF REFERENCE TIES



ALL DISTANCES ARE SHOWN IN U.S. SURVEY FEET.
BEARINGS ARE FOR TIE REFERENCE PURPOSES ONLY.

RAMSEY COUNTY
NAD83 (1986)
MONUMENT 123E
X= 599477.032 (Easting)
Y= 210572.183 (Northing)

Statements of evidence relative to this corner are on the following page.

I hereby certify that this document was prepared by me or under my direct supervision and that I am a duly Licensed Land Surveyor under the laws of the State of Minnesota.

Daniel D. Baar Date _____
Minnesota License No. 45816

- County Surveyor Land Surveyor
 Deputy County Surveyor

OFFICE OF COUNTY SURVEYOR
County of Ramsey

I hereby certify that this document was filed in the County Surveyor's office this _____ day of _____, 20 ____.

Craig W. Hinzman, L.S.
Ramsey County Surveyor

MONUMENT 123E

Meander Corner No. 2 was fixed from stakes found in White Bear, April 14, 1899.

Set monument November, 28, 1901.

Found a granite monument flush, tied, July 19, 1974.

Monument was destroyed by park area construction. Set a cast iron monument, September, 1983.

Tied monument, February 29, 1984.

Retied monument, September 29, 1999.

Retied monument, November 5, 2004.

Retied monument, November 9, 2009.

Found top broken off cast iron monument due to parking lot reconstruction, May 19, 2011.

Checked ties to center of shaft of broken cast iron monument. Set a 4 5/8 in. cast iron monument on top of broken cast iron monument; flush in bituminous parking lot; tied, July 26, 2011.

Set a Ramsey County Surveyor sign and post +/-6 ft. southeast of monument in grass median, July 27, 2011.