

# MONUMENT 122N

## CERTIFICATE OF LOCATION OF SECTION SUBDIVISION MONUMENT

Witness Monument South of Center of Section 11, Township 30 North, Range 22 West, County of Ramsey, State of Minnesota.

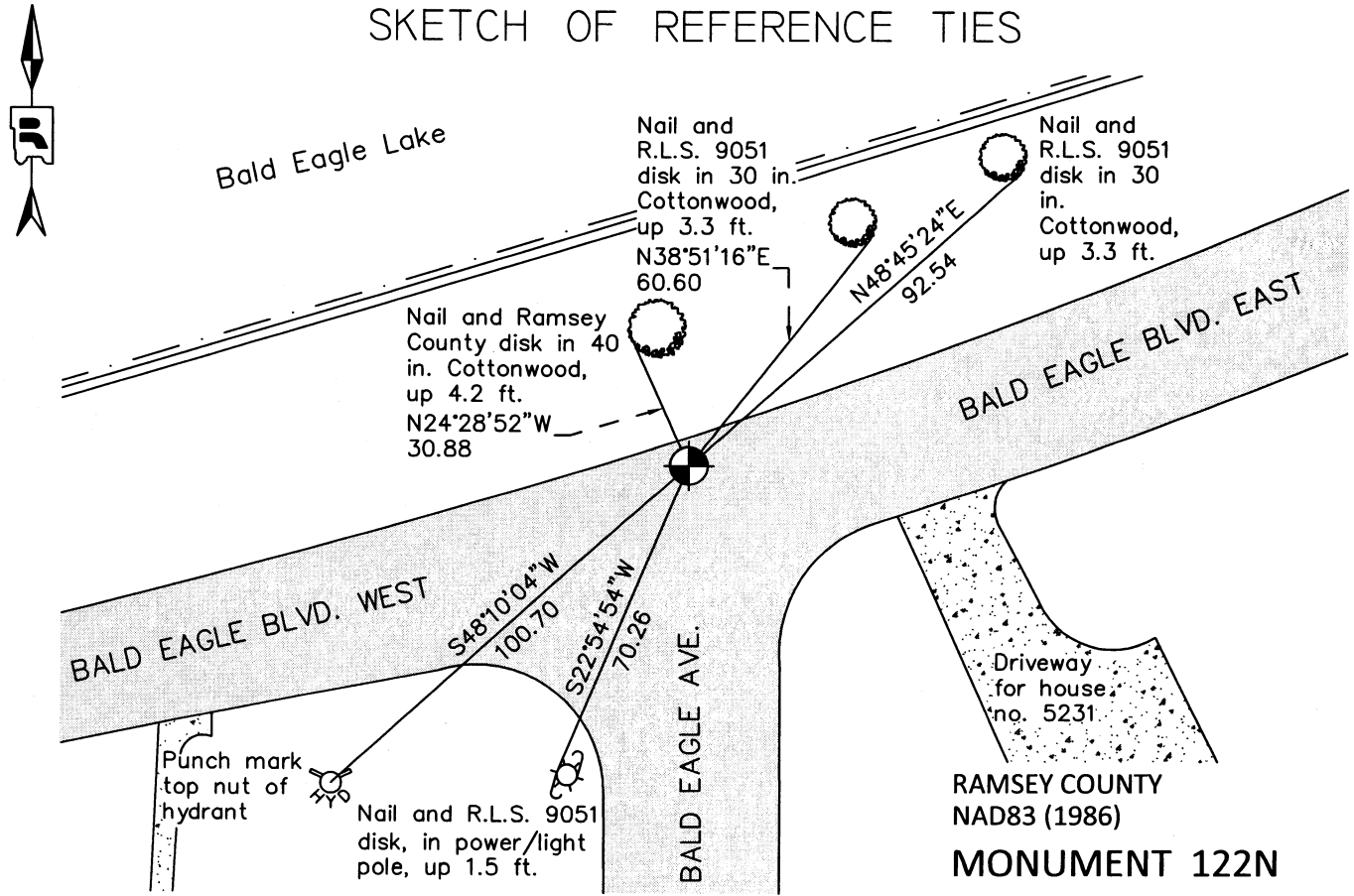
At the corner location shown on the sketch

On September 16, 2011 found a cast iron monument, in bituminous road.

left monument as found       raised/lowered monument       removed monument (explain)

On \_\_\_\_\_ placed a \_\_\_\_\_

### SKETCH OF REFERENCE TIES



ALL DISTANCES ARE SHOWN IN U.S. SURVEY FEET.  
BEARINGS ARE FOR TIE REFERENCE PURPOSES ONLY.

RAMSEY COUNTY  
NAD83 (1986)  
**MONUMENT 122N**

X= 595022.841 (Easting)  
Y= 212623.577 (Northing)

Statements of evidence relative to this corner are on the following page.

I hereby certify that this document was prepared by me or under my direct supervision and that I am a duly Licensed Land Surveyor under the laws of the State of Minnesota.

Daniel D. Baar      9-5-12  
Daniel D. Baar      Date  
Minnesota License No. 45816

- County Surveyor       Land Surveyor  
 Deputy County Surveyor

OFFICE OF COUNTY SURVEYOR  
County of Ramsey

I hereby certify that this document was filed in the County Surveyor's office this 5th day of September, 20 12.

Craig W. Hinzman  
Craig W. Hinzman, L.S.  
Ramsey County Surveyor

# MONUMENT 122N

Witness Monument South of Center of Section 11, Township 30 North, Range 22

Fixed the Center of Section 11 by Intersection, February 8, 1902.

Set Monument 568 ft. S. (122N), 1100 ft. E. (97E), 1878.35 ft. W. (96E),  
December 8, 1902.

Found a granite monument, down +/-1 ft; placed a short cast iron  
monument on top and cemented in, May 15, 1974.

Tied monument, on North edge of road pavement, July 3, 1974.

Cast iron monument broke by road maintenance. Dug down to granite monument,  
July 23, 1996.

Set a short (10 in.) Harrison cast iron monument in cement over granite monument,  
July 25, 1996.

Tied monument, March 29, 2001.

Retied monument, June 15, 2006.

Retied a cast iron monument, September 16, 2011.