

# MONUMENT 97E

## CERTIFICATE OF LOCATION OF GOVERNMENT CORNER

Monument near the East-West Quarter Line, east of the Center of Section 11,  
Township 30 North, Range 22 West, County of Ramsey, State of Minnesota.

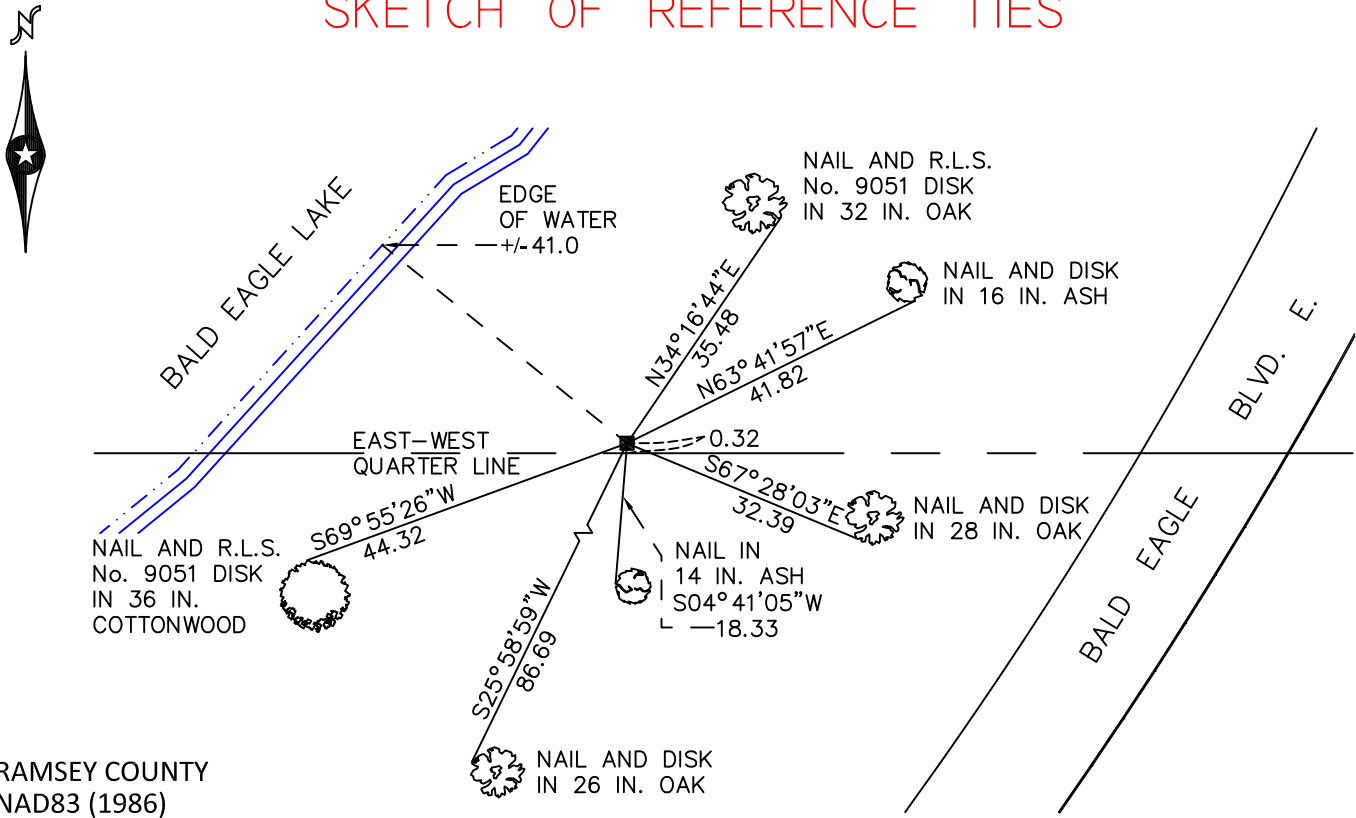
At the corner location shown on the sketch

On August 2, 2010 found a granite monument, flush.

left monument as found       raised/lowered monument       removed monument (explain)

On \_\_\_\_\_ placed a \_\_\_\_\_

### SKETCH OF REFERENCE TIES



RAMSEY COUNTY  
NAD83 (1986)

### MONUMENT 97E

X= 596121.771 (Easting)  
Y= 213193.273 (Northing)

ALL DISTANCES ARE SHOWN IN U.S. SURVEY FEET.  
BEARINGS ARE FOR TIE REFERENCE PURPOSES ONLY.

Statements of evidence relative to this corner are on the following page.

I hereby certify that this document has been prepared by me or under my direct supervision this \_\_\_\_\_ day of \_\_\_\_\_, 20\_\_\_\_.

Minnesota License No. \_\_\_\_\_

- County Surveyor       Deputy County Surveyor       Land Surveyor

OFFICE OF COUNTY SURVEYOR  
County of Ramsey

I hereby certify that this document was filed in the County Surveyor's office this \_\_\_\_\_ day of \_\_\_\_\_, 20\_\_\_\_.

Michael D. Fiebiger, P.L.S.  
Ramsey County Surveyor

# MONUMENT 97E

Found a granite monument, flush, May 13, 1974.

Retied monument, February 21, 1984.

Retied monument, December 7, 1999.

Retied monument, October 26, 2004.

Retied monument, August 2, 2010.