

MONUMENT 91

CERTIFICATE OF LOCATION OF SECTION SUBDIVISION MONUMENT

Center of Section 8, Township 30 North, Range 22 West, County of Ramsey, State of Minnesota.

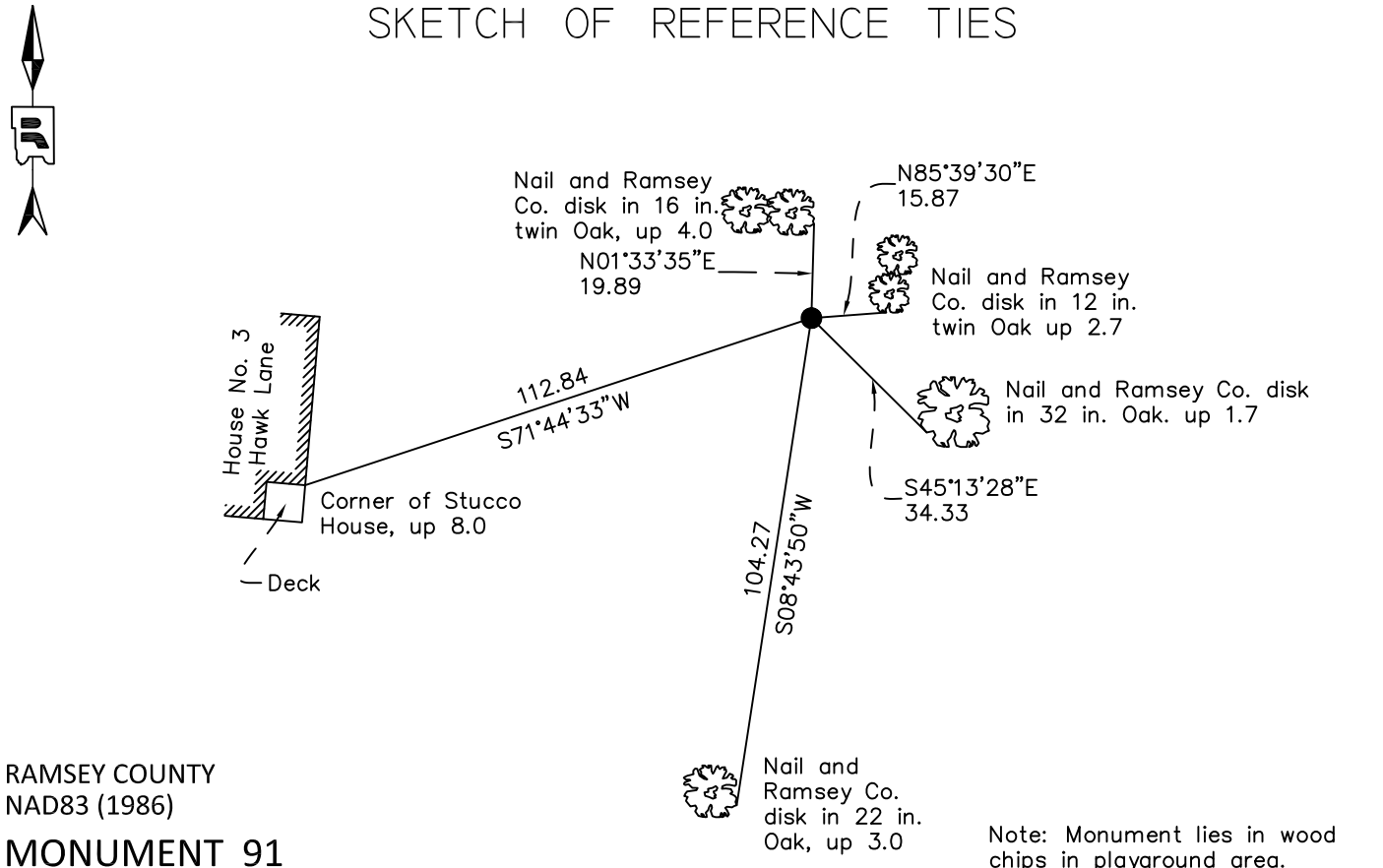
At the corner location shown on the sketch

On August 18, 2010 found a 1/2 inch iron pipe in concrete, within a 5 inch iron pipe, down 0.2 feet.

left monument as found raised/lowered monument removed monument (explain)

On _____ placed a _____

SKETCH OF REFERENCE TIES



RAMSEY COUNTY
NAD83 (1986)

MONUMENT 91

X= 579175.885 (Easting)
Y= 213105.452 (Northing)

Drafted by: DDB

ALL DISTANCES ARE SHOWN IN U.S. SURVEY FEET.
BEARINGS ARE FOR TIE REFERENCE PURPOSES ONLY.

Note: Monument lies in wood chips in playground area.

Statements of evidence relative to this corner are on the following page.

I hereby certify that this document was prepared by me or under my direct supervision and that I am a duly Licensed Land Surveyor under the laws of the State of Minnesota.

Daniel D. Baar Date _____
Minnesota License No. 45816

County Surveyor Land Surveyor
 Deputy County Surveyor

OFFICE OF COUNTY SURVEYOR
County of Ramsey

I hereby certify that this document was filed in the County Surveyor's office this _____ day of _____, 20 ____.

Craig W. Hinzman, L.S.
Ramsey County Surveyor

MONUMENT 91

Found iron in concrete set by Milner W. Carley and Associates; tied monument, March 22, 1988.

Retied monument, November 15, 2001.

Retied monument, February 23, 2005.

Retied monument, August 18, 2010.