

MONUMENT 82

CERTIFICATE OF LOCATION OF GOVERNMENT CORNER

East Quarter Corner of Section 9, Township 30 North, Range 23 West, County of Ramsey, State of Minnesota.

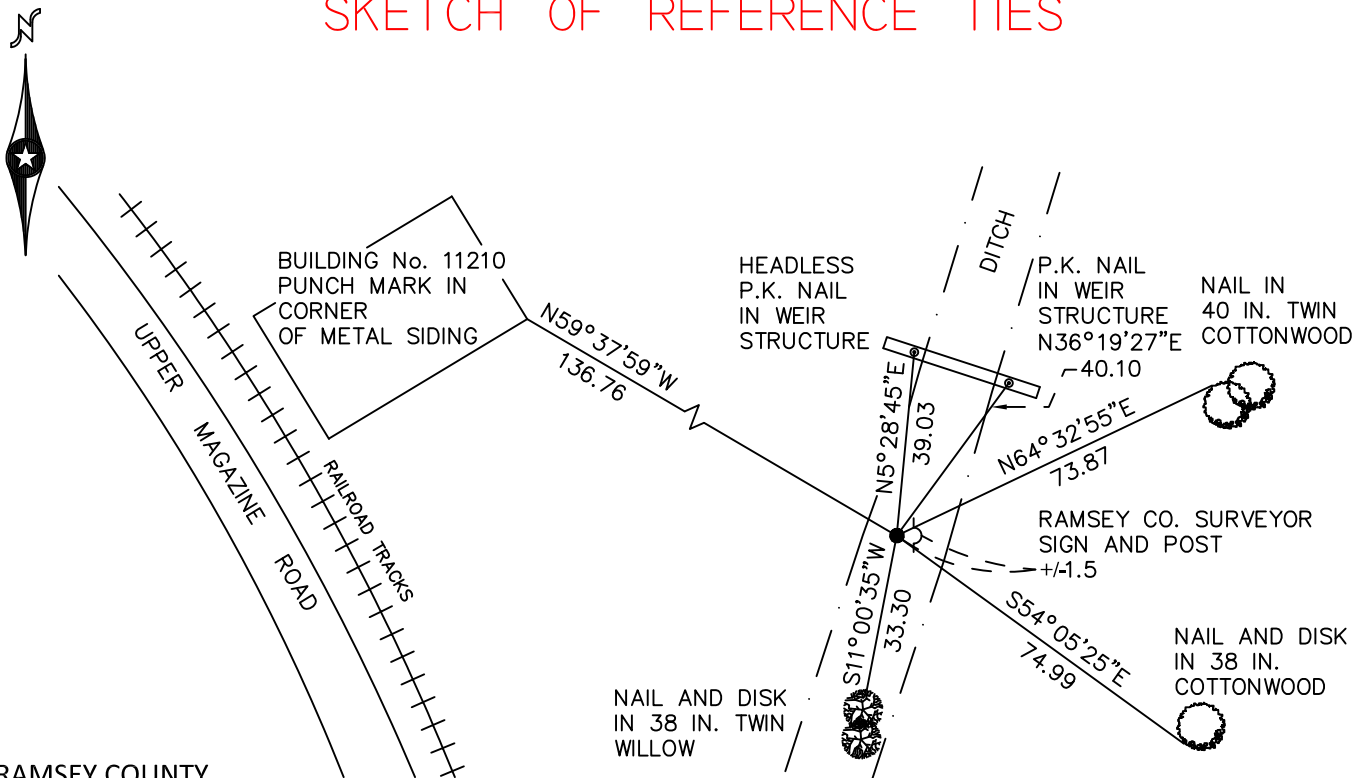
At the corner location shown on the sketch

On November 3, 2010 found a 3.5 inch diameter galvanized metal pipe, up 2.8 feet.

left monument as found raised/lowered monument removed monument (explain)

On _____ placed a _____

SKETCH OF REFERENCE TIES



RAMSEY COUNTY
NAD83 (1986)

MONUMENT 82

X= 555597.795 (Easting)
Y= 212979.118 (Northing)

ALL DISTANCES ARE SHOWN IN U.S. SURVEY FEET.
BEARINGS ARE FOR TIE REFERENCE PURPOSES ONLY.

Statements of evidence relative to this corner are on the following page.

I hereby certify that this document has been prepared by me or under my direct supervision this _____ day of _____, 20____.

Minnesota License No. _____

- County Surveyor Deputy County Surveyor Land Surveyor

OFFICE OF COUNTY SURVEYOR
County of Ramsey

I hereby certify that this document was filed in the County Surveyor's office this _____ day of _____, 20____.

Michael D. Fiebiger, P.L.S.
Ramsey County Surveyor

MONUMENT 82

Found a 4 in. iron pipe in concrete base, up +/-3 ft. in ditch; tied, August 8, 1991.

Placed a sign and post +/-2 ft. east, August 26, 1991.

Retied monument (4 in. pipe leaning southerly), April 6, 2001.

Retied monument, March 9, 2005.

Retied monument, November 3, 2010.