

MONUMENT 81

CERTIFICATE OF LOCATION OF GOVERNMENT CORNER

Center of Section 9, Township 30 North, Range 23 West, County of Ramsey, State of Minnesota.

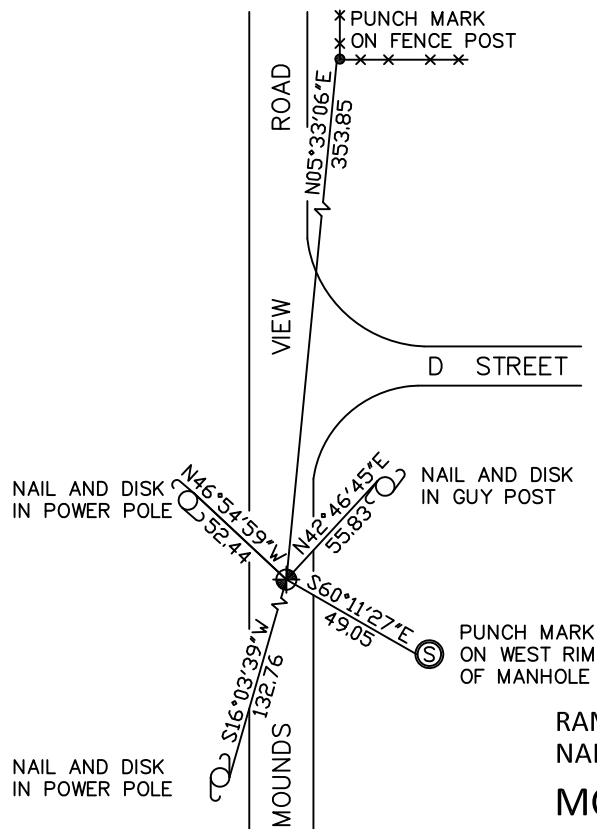
At the corner location shown on the sketch

On September 15, 2010 found a cast iron monument, flush.

left monument as found raised/lowered monument removed monument (explain)

On _____ placed a _____

SKETCH OF REFERENCE TIES



RAMSEY COUNTY
NAD83 (1986)

MONUMENT 81

ALL DISTANCES ARE SHOWN IN U.S. SURVEY FEET.
BEARINGS ARE FOR TIE REFERENCE PURPOSES ONLY.

X= 552961.551 (Easting)
Y= 212979.786 (Northing)

Statements of evidence relative to this corner are on the following page.

I hereby certify that this document has been prepared by me or under my direct supervision this _____ day of _____, 20____.

MINNESOTA LICENSE NO. _____ SIGNATURE

- County Surveyor
 Deputy County Surveyor Land Surveyor

OFFICE OF COUNTY SURVEYOR
County of Ramsey

I hereby certify that this document was filed in the County Surveyor's office this _____ day of _____, 20____.

Michael D. Fiebiger, P.L.S.
Ramsey County Surveyor SIGNATURE

MONUMENT 81

Found a solid rod, 3/4 in. by 24 in. long, flush and found a 3/4 in. inside diameter pipe by 18 in. long, down 11 in. with a 3/4 in. rod inside. Dug down 4 ft. and found nothing more. Soil is fine sand and is not stable. Placed a 24 in. cast iron monument flush and tied out, August 22, 1991.

Retied monument, April 3, 2001.

Retied monument, March 9, 2005.

Retied monument, September 15, 2010.