

MONUMENT 76N

CERTIFICATE OF LOCATION OF GOVERNMENT CORNER

Witness Monument south of the Northwest Corner of Section 7, Township 30 North,
Range 23 West, County of Ramsey, State of Minnesota.

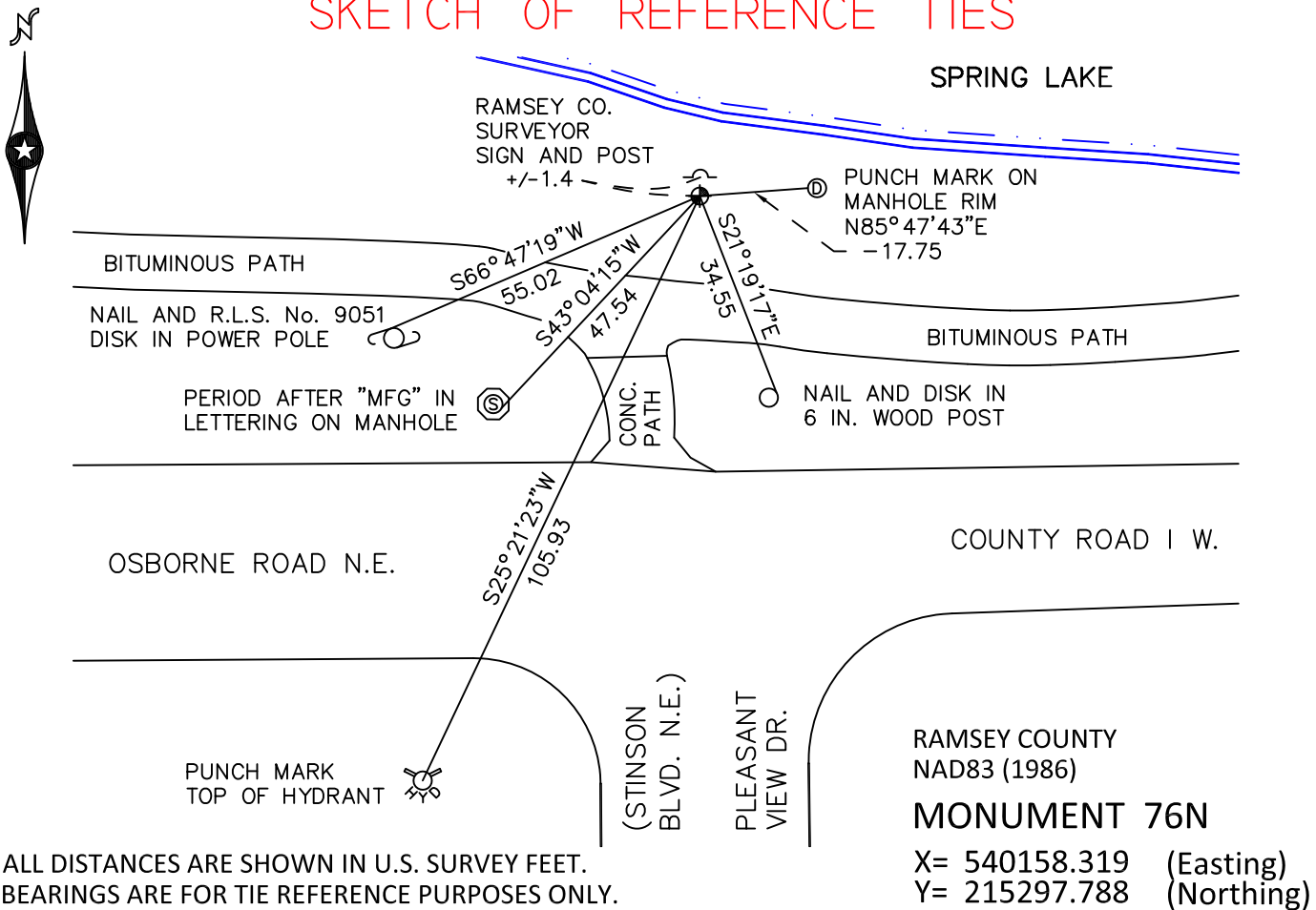
At the corner location shown on the sketch

On July 13, 2010 found a cast iron monument, down 0.5 feet.

left monument as found raised/lowered monument removed monument (explain)

On _____ placed a _____

SKETCH OF REFERENCE TIES



Statements of evidence relative to this corner are on the following page.

I hereby certify that this document has been prepared by me or under my direct supervision this _____ day of _____, 20____.

Minnesota License No. _____

- County Surveyor Deputy County Surveyor Land Surveyor

OFFICE OF COUNTY SURVEYOR
County of Ramsey

I hereby certify that this document was filed in the County Surveyor's office this _____ day of _____, 20____.

Michael D. Fiebiger, P.L.S.
Ramsey County Surveyor

MONUMENT 76N

Found a cast iron monument, down +/-0.5 ft. and tied, January 28, 1976.

Placed a sign and post +/-1 ft. north of monument, October 15, 1985.

Retied monument, September 2, 1993.

Retied monument, October 17, 2000.

Retied monument, February 25, 2005.

Retied monument, July 13, 2010.