

MONUMENT 70

CERTIFICATE OF LOCATION OF GOVERNMENT CORNER

South Quarter Corner of Section 3, Township 30 North, Range 22 West, County of Ramsey, State of Minnesota.

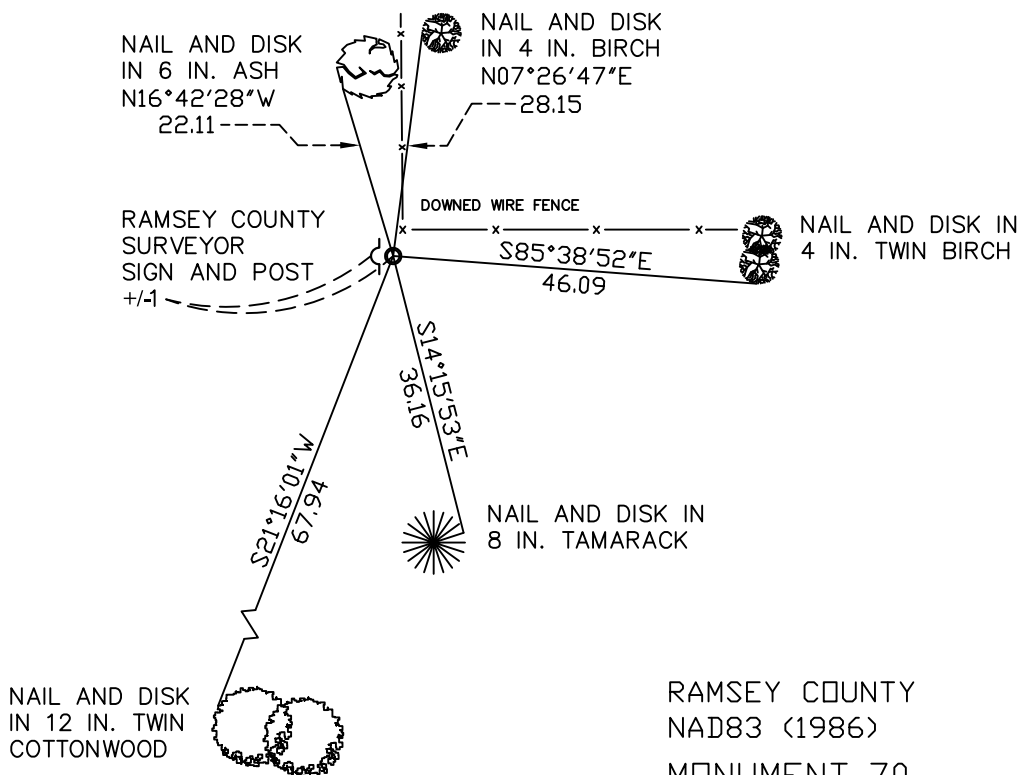
At the corner location shown on the sketch

On April 5, 2010 found a 2 inch iron pipe, up 2.3 feet.

left monument as found lowered monument removed monument (explain)

On _____ placed a _____

SKETCH OF REFERENCE TIES



RAMSEY COUNTY
NAD83 (1986)
MONUMENT 70

ALL DISTANCES ARE SHOWN IN U.S. SURVEY FEET.
BEARINGS ARE FOR TIE REFERENCE PURPOSES ONLY.

X= 589721.591 (Easting)
Y= 215796.106 (Northing)

Statements of evidence relative to this corner are on the following page(s).

I hereby certify that this document and the data contained herein was prepared by me or under my direct supervision this _____ day of _____, 20____.

SIGNATURE

Minnesota License No. _____

- County Surveyor Deputy County Surveyor Land Surveyor

OFFICE OF COUNTY SURVEYOR
County of Ramsey

I hereby certify that this document was filed in the County Surveyor's office on the _____ day of _____, 20____.

SIGNATURE

Michael D. Fiebiger, P.L.S.
Ramsey County Surveyor

MONUMENT 70

Found a 2 in. iron pipe in swamp, up +/-2 ft., May 10, 1974.

Retied monument, December 11, 1975.

Checked for granite monument approximately 0.25 ft. south of 2 in. pipe; probed down +/-4 ft. and under pipe; pipe in ground approximately +/-2 ft., March 27, 1990.

Retied monument; set sign and post, April 5, 2010.