

# MONUMENT 693

## CERTIFICATE OF LOCATION OF GOVERNMENT CORNER

Northeast Corner of Section 13, Township 28 North, Range 22 West, County of Ramsey, State of Minnesota.

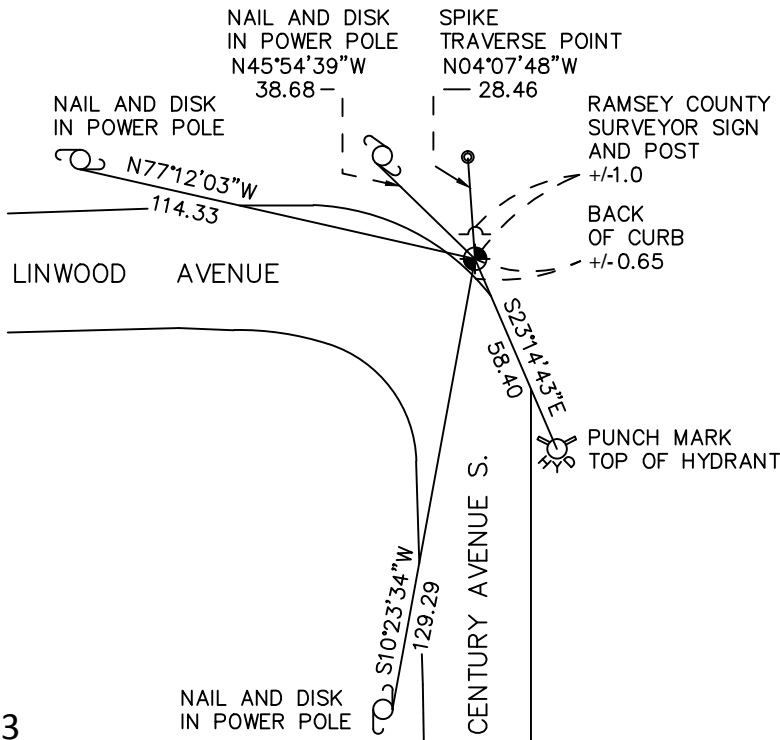
At the corner location shown on the sketch

On June 10, 2010 found a cast iron monument, flush.

left monument as found       raised/lowered monument       removed monument (explain)

On \_\_\_\_\_ placed a \_\_\_\_\_

### SKETCH OF REFERENCE TIES



RAMSEY COUNTY  
NAD83 (1986)

### MONUMENT 693

X= 603333.142 (Easting)  
Y= 147151.960 (Northing)

NAIL AND DISK  
IN POWER POLE

ALL DISTANCES ARE SHOWN IN U.S. SURVEY FEET.  
BEARINGS ARE FOR TIE REFERENCE PURPOSES ONLY.

Statements of evidence relative to this corner are on the following page.

I hereby certify that this document has been prepared by me or under my direct supervision this \_\_\_\_\_ day of \_\_\_\_\_, 20\_\_\_\_.

\_\_\_\_\_  
SIGNATURE

Minnesota License No. \_\_\_\_\_

- County Surveyor       Land Surveyor  
 Deputy County Surveyor

OFFICE OF COUNTY SURVEYOR  
County of Ramsey

I hereby certify that this document was filed in the County Surveyor's office this \_\_\_\_\_ day of \_\_\_\_\_, 20\_\_\_\_.

\_\_\_\_\_  
SIGNATURE  
Craig W. Hinzman, P.L.S.  
Ramsey County Surveyor

## MONUMENT 693

Found an iron in concrete over granite monument. Placed a short cast iron monument, July 8, 1975.

Tied monument, February 18, 1976.

Tied out monument for removal by maintenance department, May 13, 1996.

Maintenance department set manhole; found road water drained into manhole; decided to remove manhole, no date given in field book.

Set a 20 in. cast iron monument, flush, August 5, 1997.

Removed cast iron monument for sewer construction, July 15, 1998.

Reset a 20 in. cast iron monument flush with curb, June 29, 1999.

Tied monument, April 10, 2001.

Retied monument, August 4, 2006.

Tied out monument for removal during road reconstruction, August 11, 2008.

Set a 10 in. spike at corner location, October 14, 2008.

Reset a 20 in. cast iron monument; placed a sign and post +/-1 ft. north, May 20, 2010.

Tied monument, June 10, 2010.