

MONUMENT 692

CERTIFICATE OF LOCATION OF GOVERNMENT CORNER

North Quarter Corner of Section 13, Township 28 North, Range 22 West, County of Ramsey, State of Minnesota.

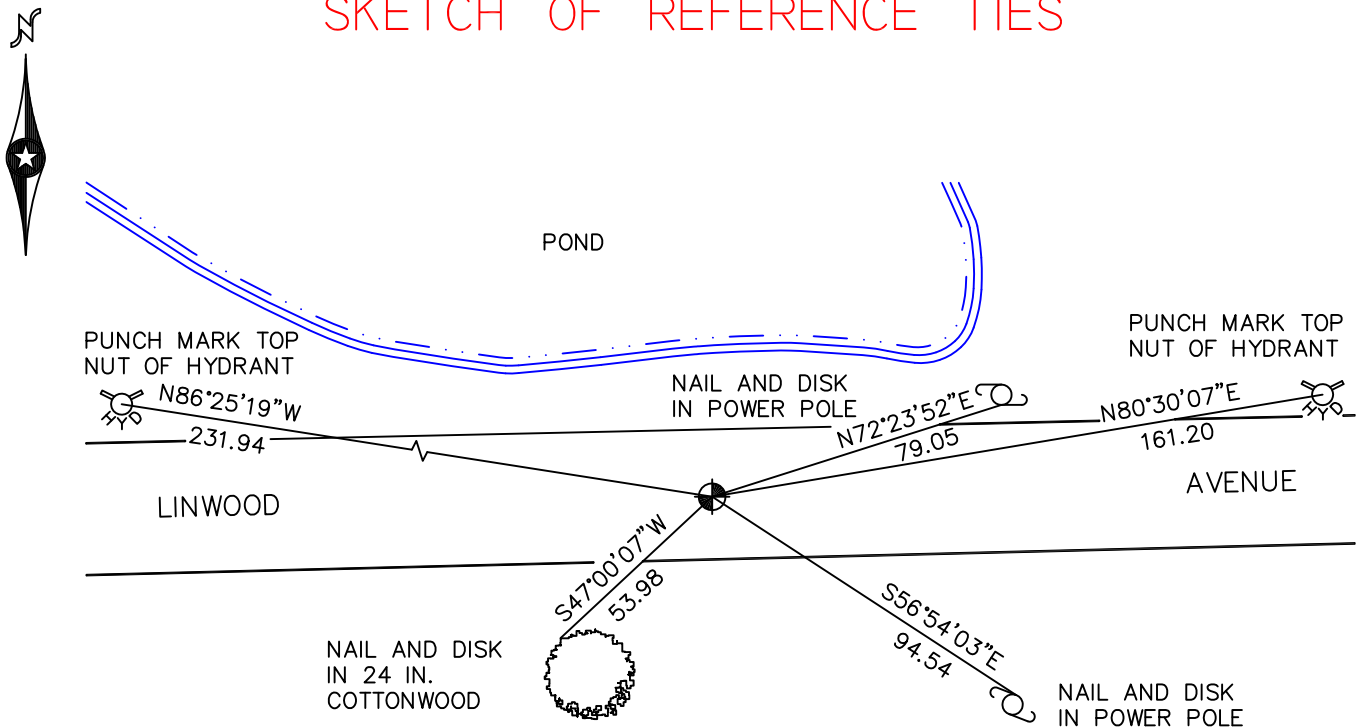
At the corner location shown on the sketch

On July 28, 2010 found a cast iron monument, within a cast iron manhole assembly.

left monument as found raised/lowered monument removed monument (explain)

On _____ placed a _____

SKETCH OF REFERENCE TIES



RAMSEY COUNTY
NAD83 (1986)

MONUMENT 692

X= 600695.085 (Easting)
Y= 147086.341 (Northing)

ALL DISTANCES ARE SHOWN IN U.S. SURVEY FEET.
BEARINGS ARE FOR TIE REFERENCE PURPOSES ONLY.

Statements of evidence relative to this corner are on the following page.

I hereby certify that this document has been prepared by me or under my direct supervision this _____ day of _____, 20____.

Minnesota License No. _____

- County Surveyor Deputy County Surveyor Land Surveyor

OFFICE OF COUNTY SURVEYOR
County of Ramsey

I hereby certify that this document was filed in the County Surveyor's office this _____ day of _____, 20____.

Craig W. Hinzman, L.S.
Ramsey County Surveyor

MONUMENT 692

Found a granite monument down +/-0.4 ft.; set a short cast iron monument over granite monument and tied, February 18, 1976.

Short cast iron monument gone. Granite monument down +/-4 1/2 in., November 15, 1990.

Tied monument, May 8, 1996. Maintenance Department to remove granite monument.

Maintenance Department set a cast iron manhole assembly in place, with a 6 in. thick concrete cylinder. Found that water seeps into manhole; tried boring a 4 in. shaft and filled with sand. Water problem persists, August, 1997.

Filled manhole with sand and set a 20 in. cast iron monument, 1998.

Tied cast iron monument, down +/-3 in., within a cast iron manhole assembly, April 18, 2001.

Monument lost during housing development project. Monument replaced by using traverse notes and monument ties of record. Cast iron manhole assembly placed around monument and tied, September 14, 2005.

Retied monument, July 28, 2010.