

MONUMENT 670N

CERTIFICATE OF LOCATION OF SECTION SUBDIVISION MONUMENT

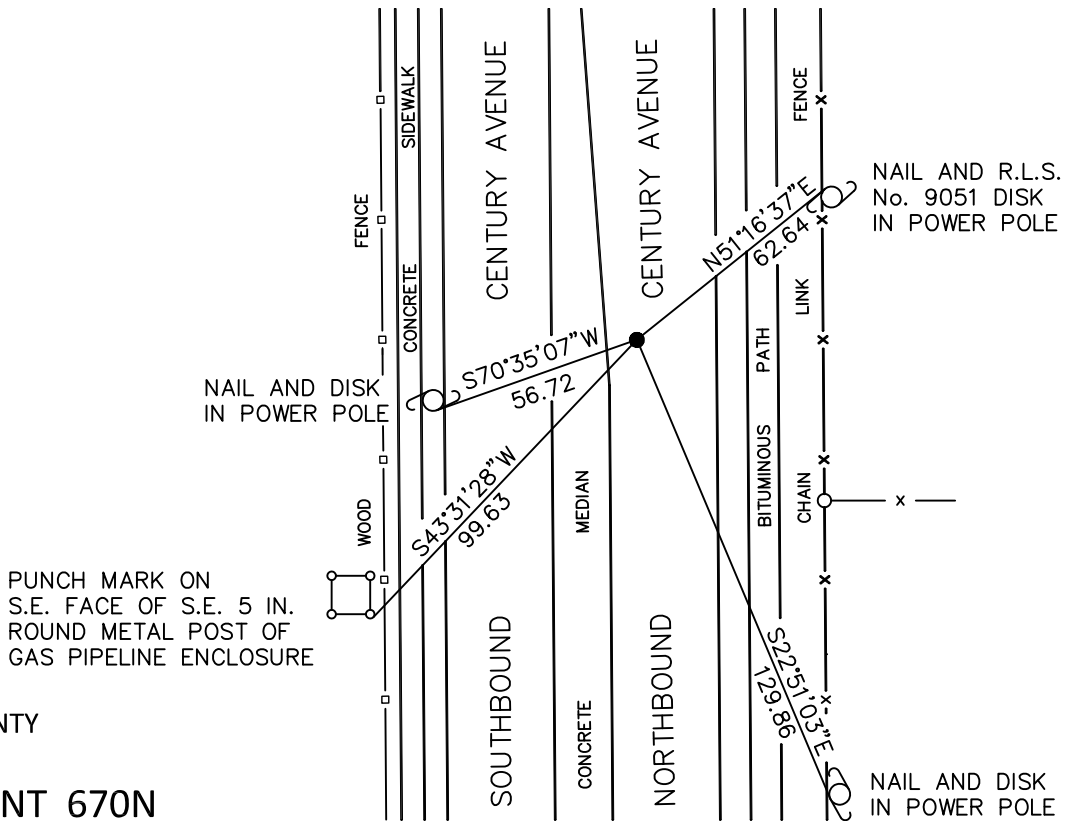
North Sixteenth Corner between Section 12, Township 28 North, Range 22 West,
 County of Ramsey, State of Minnesota and Section 7, Township 28 North, Range 21
 West, County of Washington, State of Minnesota.
 At the corner location shown on the sketch

On June 21, 2010 found a 5/8 inch rebar with a plastic cap stamped "RAMSEY COUNTY",
down 0.02 feet.

left monument as found raised/lowered monument removed monument (explain)

On _____ placed a _____

SKETCH OF REFERENCE TIES



RAMSEY COUNTY
 NAD83 (1986)
MONUMENT 670N

X= 603303.380 (Easting)
 Y= 151113.870 (Northing)

ALL DISTANCES ARE SHOWN IN U.S. SURVEY FEET.
 BEARINGS ARE FOR TIE REFERENCE PURPOSES ONLY.

Statements of evidence relative to this corner are on the following page.

I hereby certify that this document has been prepared by me or under my direct supervision this _____ day of _____, 20____.

SIGNATURE
 Minnesota License No. _____

- County Surveyor Land Surveyor
 Deputy County Surveyor

OFFICE OF COUNTY SURVEYOR
 County of Ramsey

I hereby certify that this document was filed in the County Surveyor's office this _____ day of _____, 20____.

SIGNATURE
 Craig W. Hinzman, L.S.
 Ramsey County Surveyor

MONUMENT 670N

Found a boat spike down 3 in., December 17, 1974.

Dug and found a granite monument with a chiseled "X" on top, down 3.75 ft.; placed a 1/2 in. diameter iron pipe over granite monument flush with road surface, no date given in field book.

Found a 1/2 in. diameter iron pipe down 0.5 ft.; tied out, November 14, 2008.

Tied out monument for removal during road reconstruction, April 15, 2009.

Monument removed during road reconstruction, June, 2009.

Set a 5/8 in. rebar in bituminous with a plastic cap stamped "Ramsey County", flush, June 18, 2010.

Tied monument, June 21, 2010.