

MONUMENT 624

CERTIFICATE OF LOCATION OF GOVERNMENT CORNER

East Quarter Corner of Section 1, Township 28 North, Range 22 West, County of Ramsey, State of Minnesota.

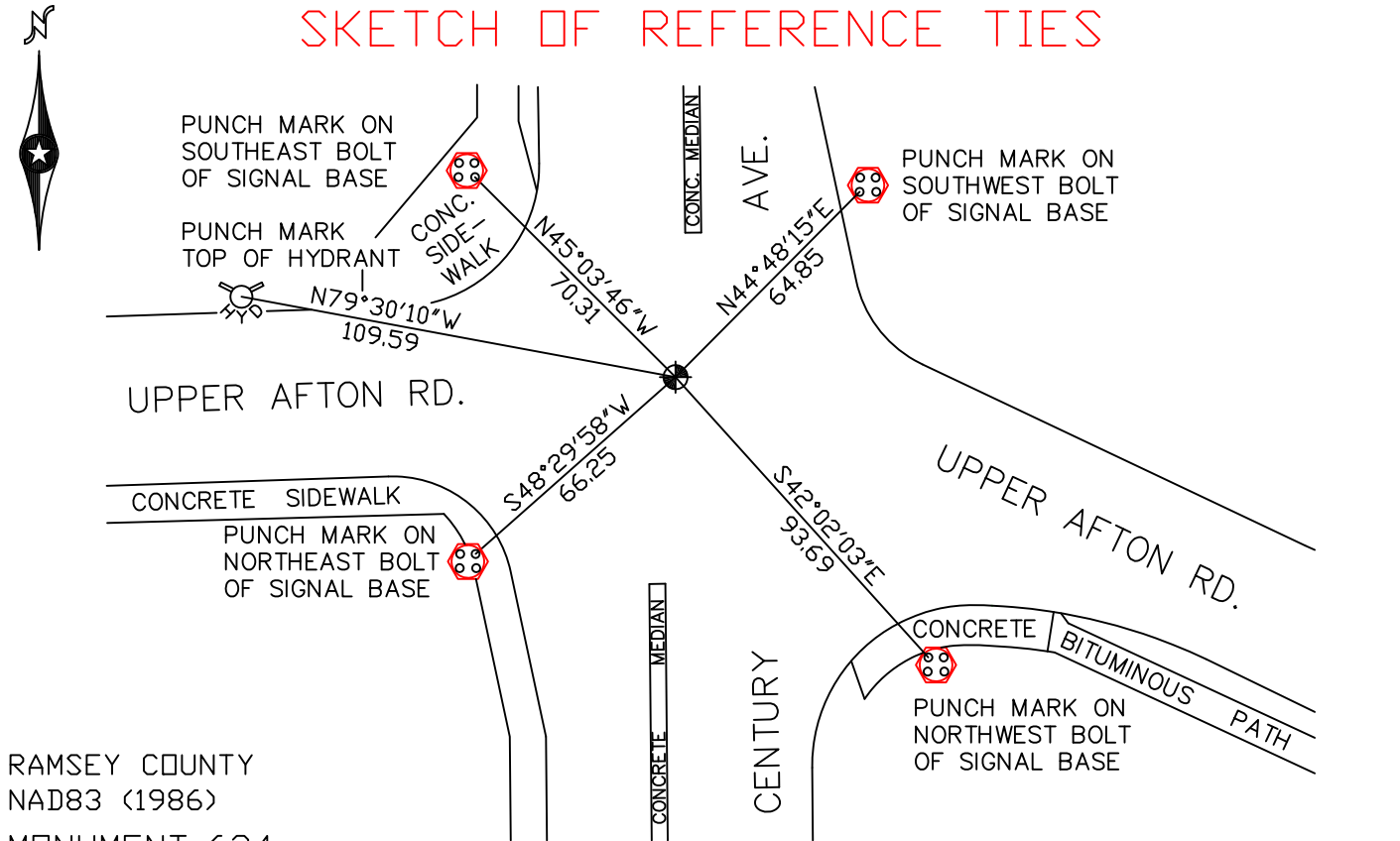
At the corner location shown on the sketch

On June 18, 2010 found a cast iron monument, within a cast iron manhole assembly.

left monument as found lowered monument removed monument (explain)

On _____ placed a _____

SKETCH OF REFERENCE TIES



RAMSEY COUNTY
NAD83 (1986)
MONUMENT 624

X= 603267.996 (Easting)
Y= 155067.445 (Northing)

ALL DISTANCES ARE SHOWN IN U.S. SURVEY FEET.
BEARINGS ARE FOR TIE REFERENCE PURPOSES ONLY.

Statements of evidence relative to this corner are on the following page(s).

I hereby certify that this document and the data contained herein was prepared by me or under my direct supervision this _____ day of _____, 20____.

SIGNATURE

Minnesota License No. _____

County Surveyor
 Deputy County Surveyor Land Surveyor

OFFICE OF COUNTY SURVEYOR
County of Ramsey

I hereby certify that this document was filed in the County Surveyor's office on the _____ day of _____, 20____.

SIGNATURE

Michael D. Fiebiger, P.L.S.
Ramsey County Surveyor

MONUMENT 624

Found a railroad spike; removed and found granite monument down 0.58 ft.; set a short cast iron monument flush with surface over granite monument and cemented in place, July 16, 1976.

Tied monument, down +/- 0.3 ft., June 11, 1990.

Retied monument, January 7, 2003.

Removed short cast iron monument, granite monument down 0.85 ft.
Reset cast iron monument flush and cemented in place, July 11, 2005.

Tied monument out for removal during road reconstruction, April 15, 2009.

Cast iron monument and granite monument removed during road reconstruction, July 13, 2009.

Set a 20 in. cast iron monument; cast iron manhole assembly set by road construction crew, June 9, 2010.

Tied monument , June 18, 2010.