

MONUMENT 366E

CERTIFICATE OF LOCATION OF GOVERNMENT CORNER

East Witness Monument to the North Quarter Corner of Section 10, Township 29 North, Range 22 West, County of Ramsey, State of Minnesota.

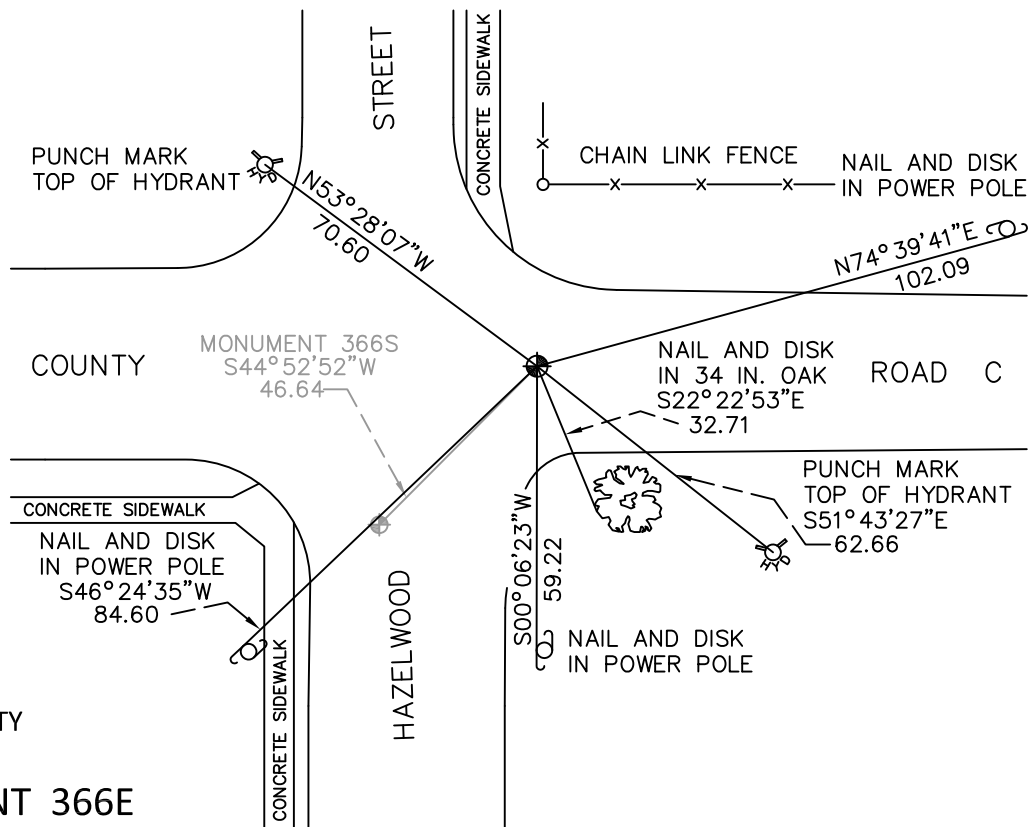
At the corner location shown on the sketch

On October 14, 2010 found a cast iron monument, within a cast iron manhole assembly.

left monument as found raised/lowered monument removed monument (explain)

On _____ placed a _____

SKETCH OF REFERENCE TIES



RAMSEY COUNTY
NAD83 (1986)

MONUMENT 366E

X= 589993.580 (Easting)
Y= 183952.087 (Northing)

ALL DISTANCES ARE SHOWN IN U.S. SURVEY FEET.
BEARINGS ARE FOR TIE REFERENCE PURPOSES ONLY.

Statements of evidence relative to this corner are on the following page.

I hereby certify that this document has been prepared by me or under my direct supervision this _____ day of _____, 20____.

Minnesota License No. _____

- County Surveyor Deputy County Surveyor Land Surveyor

OFFICE OF COUNTY SURVEYOR
County of Ramsey

I hereby certify that this document was filed in the County Surveyor's office this _____ day of _____, 20____.

Michael D. Fiebiger, P.L.S.
Ramsey County Surveyor

MONUMENT 336E

Found a manhole at intersection; used P.K. nails placed by Mr. Don Campbell and used by State Highway Department in measuring Sections 1 through 4 for City of Maplewood; placed a cast iron witness corner monument on line 33 ft. east, 1974.

Tied witness corner, April 16, 1975.

Checked monument, May 11, 1981.

Witness corner replaced after milling project, 1989.

Tied monument, August 9, 1990.

Set P.K. nails and retied, July 27, 1994.

Set a 20 in. cast iron monument, August, 1994.

Tied monument, April 7, 2003.

Retied monument, October 8, 2009.

Tied out monument for removal during road reconstruction, May 25, 2010.

Reset monument, placed a 20 in. cast iron monument, within a cast iron manhole assembly, October 13, 2010.

Tied monument, October 14, 2010.