

# MONUMENT 363E

## CERTIFICATE OF LOCATION OF GOVERNMENT CORNER

Witness Corner East of the Northwest Corner of Section 9, Township 29 North, Range 22 West, County of Ramsey, State of Minnesota.

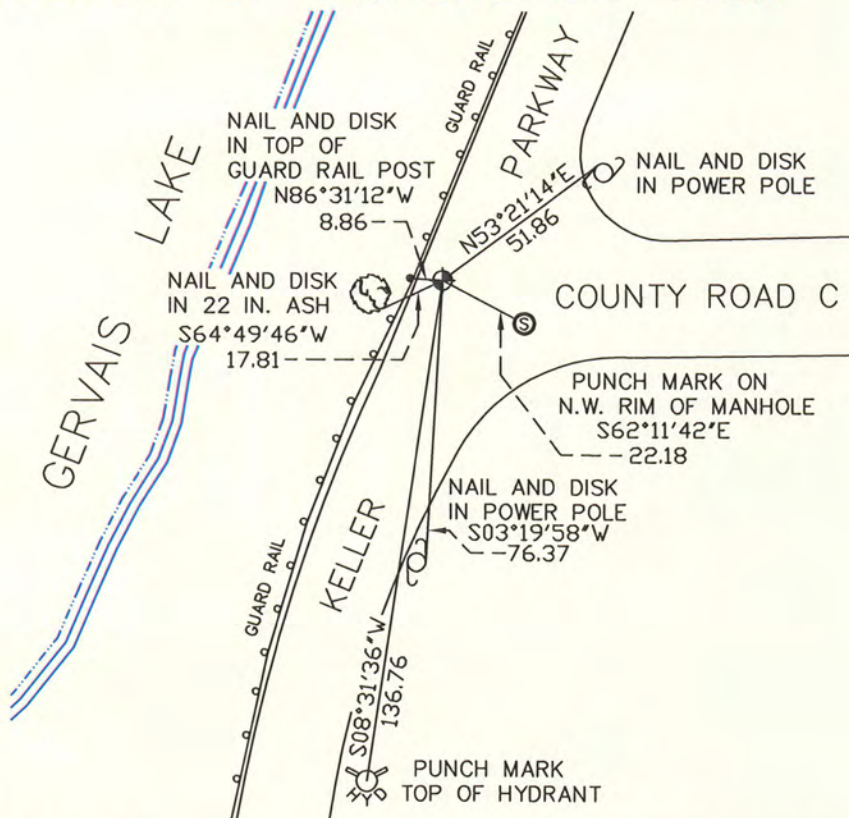
At the corner location shown on the sketch

On June 25, 2009 found a cast iron monument, flush.

left monument as found     lowered monument     removed monument (explain)

On \_\_\_\_\_ placed a \_\_\_\_\_

### SKETCH OF REFERENCE TIES



RAMSEY COUNTY  
NAD83 (1986)  
MONUMENT 363E

X= 582082.893 (Easting)  
Y= 183927.652 (Northing)

ALL DISTANCES ARE SHOWN IN U.S. SURVEY FEET.  
BEARINGS ARE FOR TIE REFERENCE PURPOSES ONLY.

Statements of evidence relative to this corner are on the following page(s).

I hereby certify that this document and the data contained herein was prepared by me or under my direct supervision this 14 day of June, 2010.

Michael D. Flebiger  
SIGNATURE

Minnesota License No. 25717

- County Surveyor  
 Deputy County Surveyor     Land Surveyor

OFFICE OF COUNTY SURVEYOR  
County of Ramsey

I hereby certify that this document was filed in the County Surveyor's office on the 14 day of June, 2010.

Michael D. Flebiger  
SIGNATURE

Michael D. Flebiger, P.L.S.  
Ramsey County Surveyor

## MONUMENT 363E

Found 1 1/4 in. by 2.6 ft. long solid iron; dug down 4.4 ft. in search of more evidence; no luck; placed a cast iron monument with concrete around top, tied, June 26, 1974.

Monument checked, May 11, 1981.

Retied monument, August 8, 1990.

Removed cast iron monument for Maintenance Department, July 6, 1995.

Set a 20 in. cast iron monument, 1996.

Tied monument, January 17, 2003.

Retied monument, June 25, 2009.

