

MONUMENT 352

CERTIFICATE OF LOCATION OF GOVERNMENT CORNER

North Quarter Corner of Section 9, Township 29 North, Range 23 West, County of Ramsey, State of Minnesota.

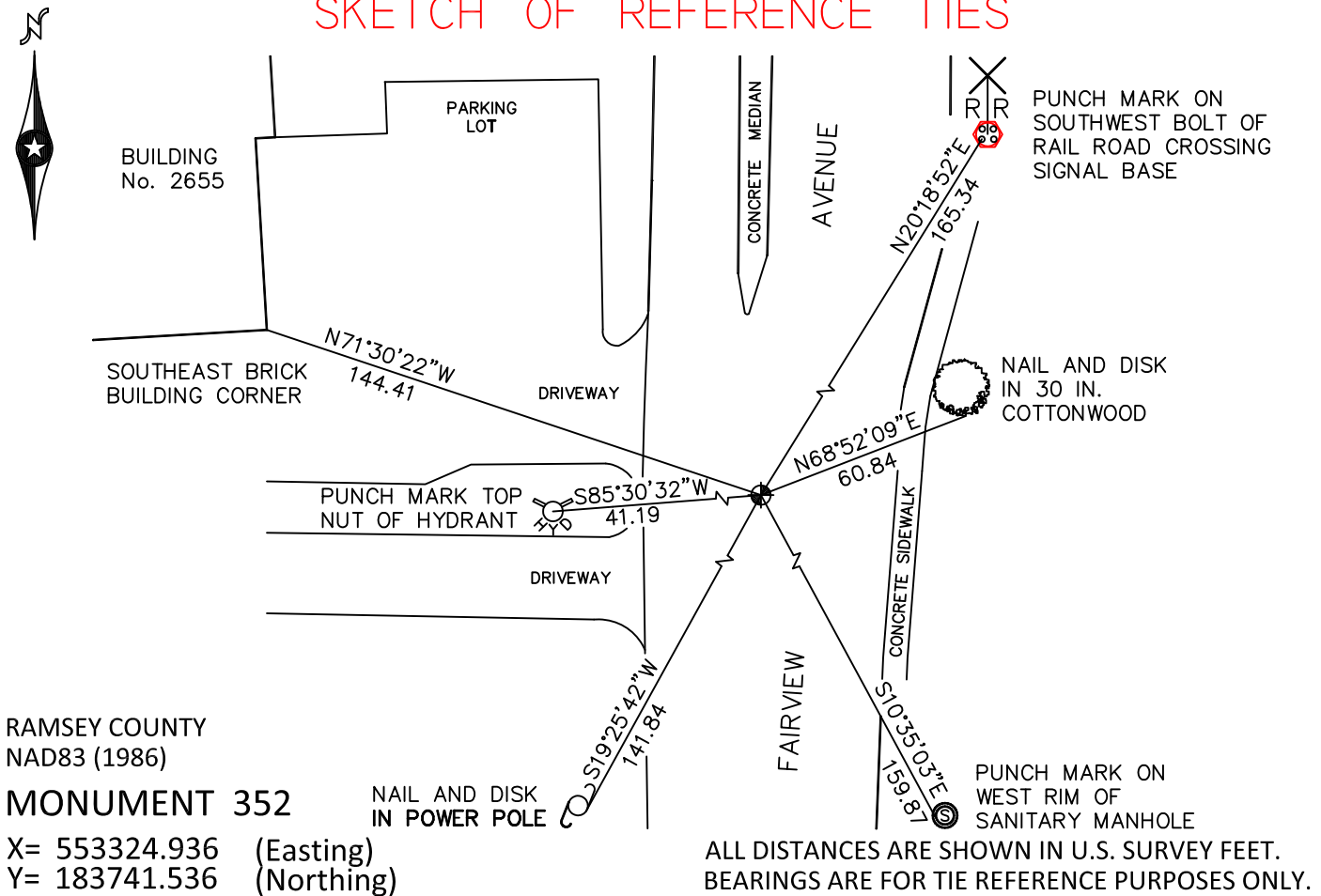
At the corner location shown on the sketch

On July 28, 2010 found a cast iron monument, within a cast iron manhole assembly.

left monument as found raised/lowered monument removed monument (explain)

On _____ placed a _____

SKETCH OF REFERENCE TIES



Statements of evidence relative to this corner are on the following page.

I hereby certify that this document has been prepared by me or under my direct supervision this _____ day of _____, 20____.

SIGNATURE

Minnesota License No. _____

- County Surveyor
 Deputy County Surveyor Land Surveyor

OFFICE OF COUNTY SURVEYOR
County of Ramsey

I hereby certify that this document was filed in the County Surveyor's office this _____ day of _____, 20____.

SIGNATURE

Craig W. Hinzman, L.S.
Ramsey County Surveyor

MONUMENT 352

Found a granite monument down 0.25 ft. and tied out, July 24, 1974.

Granite monument removed during road construction. Replaced with a cast iron monument, May 8, 1975.

Tied monument, 1981.

Checked ties, January 16, 1991.

Retied monument, September 13, 2000.

Monument tied out prior to removal for road construction. Replaced with a 20 in. cast iron monument and tied out, September 30, 2005.

Retied monument, July 28, 2010.