

# MONUMENT 316

## CERTIFICATE OF LOCATION OF GOVERNMENT CORNER

South Quarter Corner of Section 32, Township 30 North, Range 22 West, County of Ramsey, State of Minnesota.

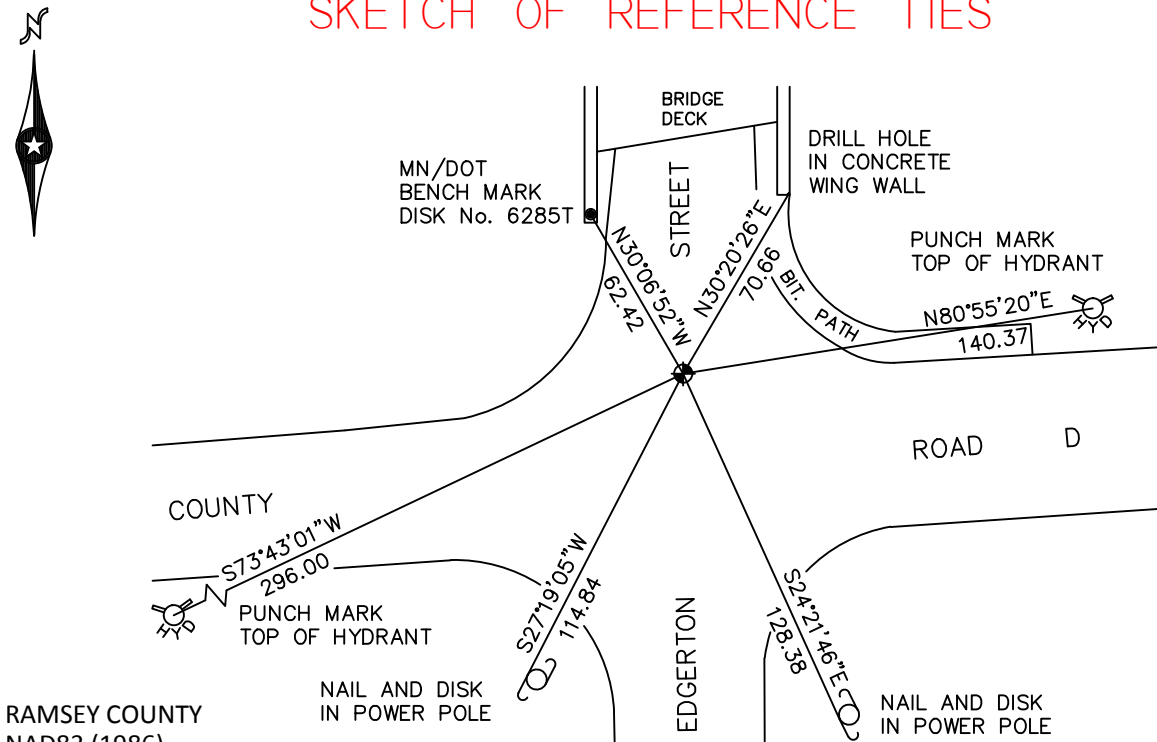
At the corner location shown on the sketch

On July 26, 2010 found a cast iron monument, within a cast iron manhole assembly.

left monument as found       raised/lowered monument       removed monument (explain)

On \_\_\_\_\_ placed a \_\_\_\_\_

### SKETCH OF REFERENCE TIES



RAMSEY COUNTY  
NAD83 (1986)

### MONUMENT 316

X= 579282.252 (Easting)  
Y= 189402.202 (Northing)

ALL DISTANCES ARE SHOWN IN U.S. SURVEY FEET.  
BEARINGS ARE FOR TIE REFERENCE PURPOSES ONLY.

Statements of evidence relative to this corner are on the following page.

I hereby certify that this document has been prepared by me or under my direct supervision this \_\_\_\_\_ day of \_\_\_\_\_, 20\_\_\_\_.

\_\_\_\_\_  
MINNESOTA LICENSE NO. \_\_\_\_\_  
 County Surveyor       Deputy County Surveyor       Land Surveyor

OFFICE OF COUNTY SURVEYOR  
County of Ramsey  
I hereby certify that this document was filed in the County Surveyor's office this \_\_\_\_\_ day of \_\_\_\_\_, 20\_\_\_\_.

\_\_\_\_\_  
SIGNATURE  
Craig W. Hinzman, L.S.  
Ramsey County Surveyor

## MONUMENT 316

Found a cast iron monument flush, tied, 1976.

Retied monument, August 31, 1990.

Retied monument, December 3, 1998.

Monument tied out for reconstruction of bridge, September 9, 2003.

Monument reset within a cast iron manhole assembly, July 13, 2005.

Tied monument, July 28, 2005.

Retied monument, July 26, 2010.