

MONUMENT 312E

CERTIFICATE OF LOCATION OF GOVERNMENT CORNER

Witness Monument to Meander Corner No. 5, Section 1, Township 29 North, Range 23 West, County of Ramsey, State of Minnesota.

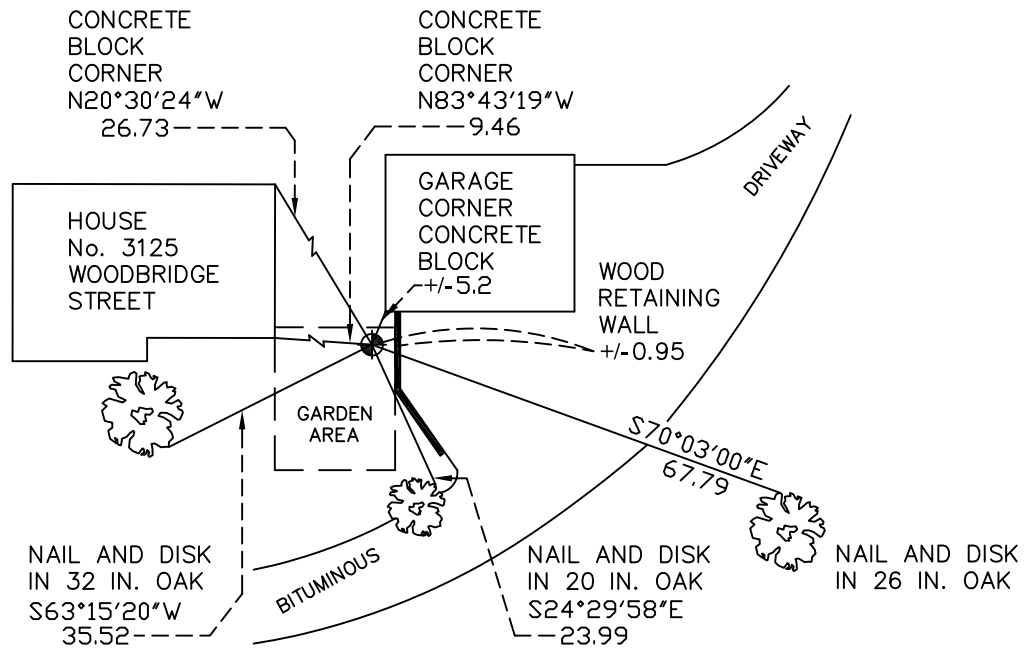
At the corner location shown on the sketch

On May 26, 2010 found a cast iron monument, within a cast iron manhole assembly.

left monument as found lowered monument removed monument (explain)

On _____ placed a _____

SKETCH OF REFERENCE TIES



RAMSEY COUNTY
NAD83 (1986)

MONUMENT 312E

X= 570926.632 (Easting)
Y= 189373.860 (Northing)

ALL DISTANCES ARE SHOWN IN U.S. SURVEY FEET.
BEARINGS ARE FOR TIE REFERENCE PURPOSES ONLY.

Statements of evidence relative to this corner are on the following page(s).

I hereby certify that this document and the data contained herein was prepared by me or under my direct supervision this _____ day of _____, 20____.

SIGNATURE

Minnesota License No. _____

- County Surveyor
 Deputy County Surveyor Land Surveyor

OFFICE OF COUNTY SURVEYOR
County of Ramsey

I hereby certify that this document was filed in the County Surveyor's office on the _____ day of _____, 20____.

SIGNATURE

Michael D. Fiebiger, P.L.S.
Ramsey County Surveyor

MONUMENT 312E

Granite monument set 100 ft. east of Meander Corner No. 5, November 28, 1900.

Found a granite monument up 0.2 ft., July, 1974.

Monument checked, May 9, 1977.

Tied monument, August 2, 1989.

House was constructed. Set a 20 in. cast iron monument from traverse point "Owasso". Tied monument and set a manhole assembly, October 3, 2001.

Retied monument, May 26, 2010.