

MONUMENT 298

CERTIFICATE OF LOCATION OF GOVERNMENT CORNER

West Quarter Corner of Section 36, Township 30 North, Range 22 West, County of Ramsey, State of Minnesota.

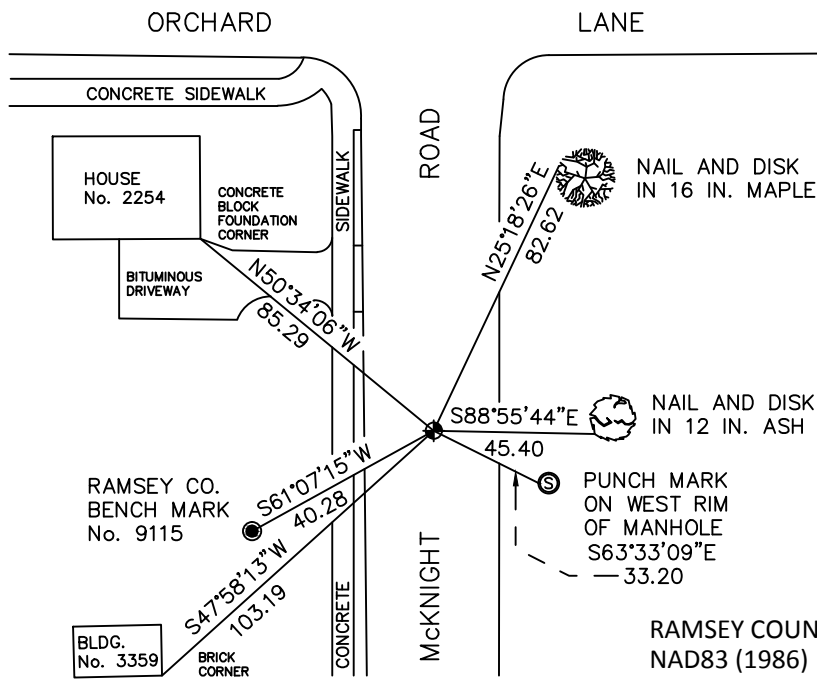
At the corner location shown on the sketch

On July 21, 2010 found a cast iron monument, within a cast iron manhole assembly.

left monument as found raised/lowered monument removed monument (explain)

On _____ placed a _____

SKETCH OF REFERENCE TIES



ALL DISTANCES ARE SHOWN IN U.S. SURVEY FEET.
BEARINGS ARE FOR TIE REFERENCE PURPOSES ONLY.

Statements of evidence relative to this corner are on the following page.

I hereby certify that this document has been prepared by me or under my direct supervision this _____ day of _____, 20____.

SIGNATURE

Minnesota License No. _____

- County Surveyor
 Deputy County Surveyor Land Surveyor

OFFICE OF COUNTY SURVEYOR
County of Ramsey

I hereby certify that this document was filed in the County Surveyor's office this _____ day of _____, 20____.

SIGNATURE
Michael D. Fiebiger, P.L.S.
Ramsey County Surveyor

MONUMENT 298

Found a cast iron monument flush and tied, February 12, 1976.

Checked ties, June 25, 1991.

Retied monument, November 13, 1998.

Monument lowered and a manhole assembly placed over top for mill and overlay project, July 18, 2005.

Tied monument, August 1, 2005.

Retied monument, July 21, 2010.