

# MONUMENT 281S

## CERTIFICATE OF LOCATION OF GOVERNMENT CORNER

South Witness Monument to the Center of Section 33, Township 30 North, Range 23 West, County of Ramsey, State of Minnesota.

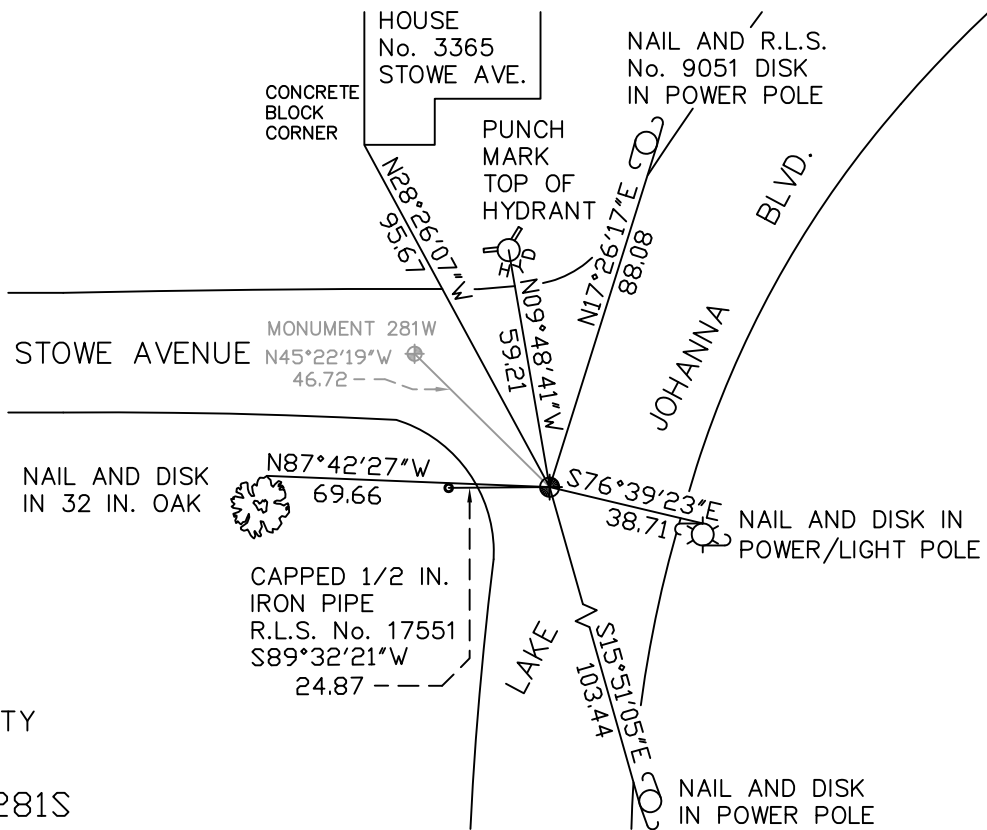
At the corner location shown on the sketch

On October 12, 2010 found a cast iron monument, down 0.1 foot.

left monument as found     lowered monument     removed monument (explain)

On \_\_\_\_\_ placed a \_\_\_\_\_

### SKETCH OF REFERENCE TIES



RAMSEY COUNTY  
NAD83 (1986)  
MONUMENT 281S

X= 553195.636 (Easting)  
Y= 191855.267 (Northing)

ALL DISTANCES ARE SHOWN IN U.S. SURVEY FEET.  
BEARINGS ARE FOR TIE REFERENCE PURPOSES ONLY.

Statements of evidence relative to this corner are on the following page(s).

I hereby certify that this document and the data contained herein was prepared by me or under my direct supervision this \_\_\_\_\_ day of \_\_\_\_\_, 20\_\_\_\_.

\_\_\_\_\_  
SIGNATURE  
Minnesota License No. \_\_\_\_\_  
 County Surveyor  
 Deputy County Surveyor     Land Surveyor

OFFICE OF COUNTY SURVEYOR  
County of Ramsey

I hereby certify that this document was filed in the County Surveyor's office on the \_\_\_\_\_ day of \_\_\_\_\_, 20\_\_\_\_.

\_\_\_\_\_  
SIGNATURE  
Michael D. Fiebiger, P.L.S.  
Ramsey County Surveyor

## MONUMENT 281S

Found a cast iron monument, flush and retied, August 9, 1974.

Checked ties, April 20, 1990.

Removed cast iron monument (found 10 in. cast iron) lying against sloped side of cone section of sanitary sewer manhole; manhole cover buried +/-8 in., June 30, 1995.

Placed a witness monument (20 in. cast iron) in cement 33 ft. south of position, June 11, 1996.

Tied monument, June 14, 1996.

Retied monument, flush, August 9, 2003.

Found monument and retied, October 12, 2010.