

MONUMENT 271

CERTIFICATE OF LOCATION OF GOVERNMENT CORNER

Northeast Corner of Section 34, Township 30 North, Range 22 West, County of Ramsey, State of Minnesota.

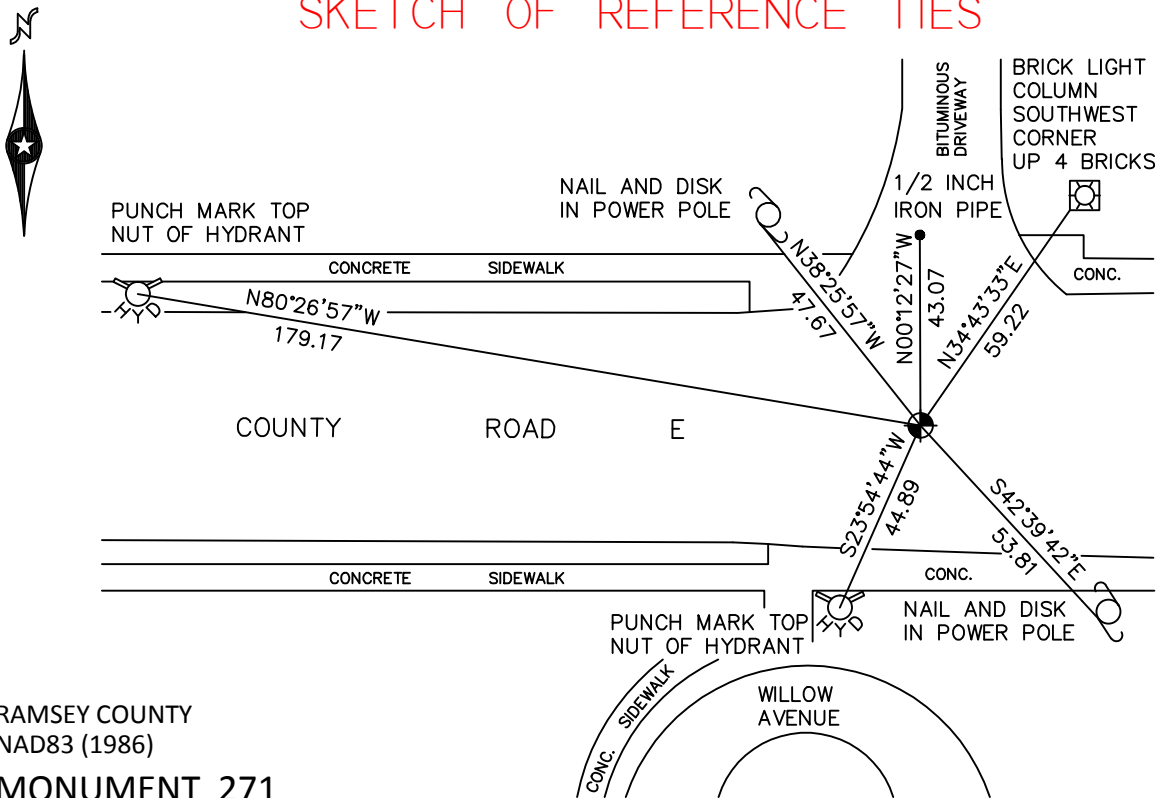
At the corner location shown on the sketch

On June 7, 2010 found a cast iron monument, down 0.1 foot.

left monument as found raised/lowered monument removed monument (explain)

On _____ placed a _____

SKETCH OF REFERENCE TIES



RAMSEY COUNTY
NAD83 (1986)

MONUMENT 271

X= 592466.362 (Easting)
Y= 194693.076 (Northing)

ALL DISTANCES ARE SHOWN IN U.S. SURVEY FEET.
BEARINGS ARE FOR TIE REFERENCE PURPOSES ONLY.

Statements of evidence relative to this corner are on the following page.

I hereby certify that this document has been prepared by me or under my direct supervision this _____ day of _____, 20____.

SIGNATURE

Minnesota License No. _____

- County Surveyor Land Surveyor
 Deputy County Surveyor

OFFICE OF COUNTY SURVEYOR
County of Ramsey

I hereby certify that this document was filed in the County Surveyor's office this _____ day of _____, 20____.

SIGNATURE

Craig W. Hinzman, L.S.
Ramsey County Surveyor

MONUMENT 271

Cast iron monument destroyed by construction; replaced with a 20 in. cast iron monument, May, 1988.

Tied monument, July, 1989.

Retied monument, September 23, 1999.

Retied monument, October 27, 2005.

Retied monument, June 7, 2010.