

# MONUMENT 27

## CERTIFICATE OF LOCATION OF GOVERNMENT CORNER

Center of Section 6, Township 30 North, Range 23 West, County of Ramsey, State of Minnesota.

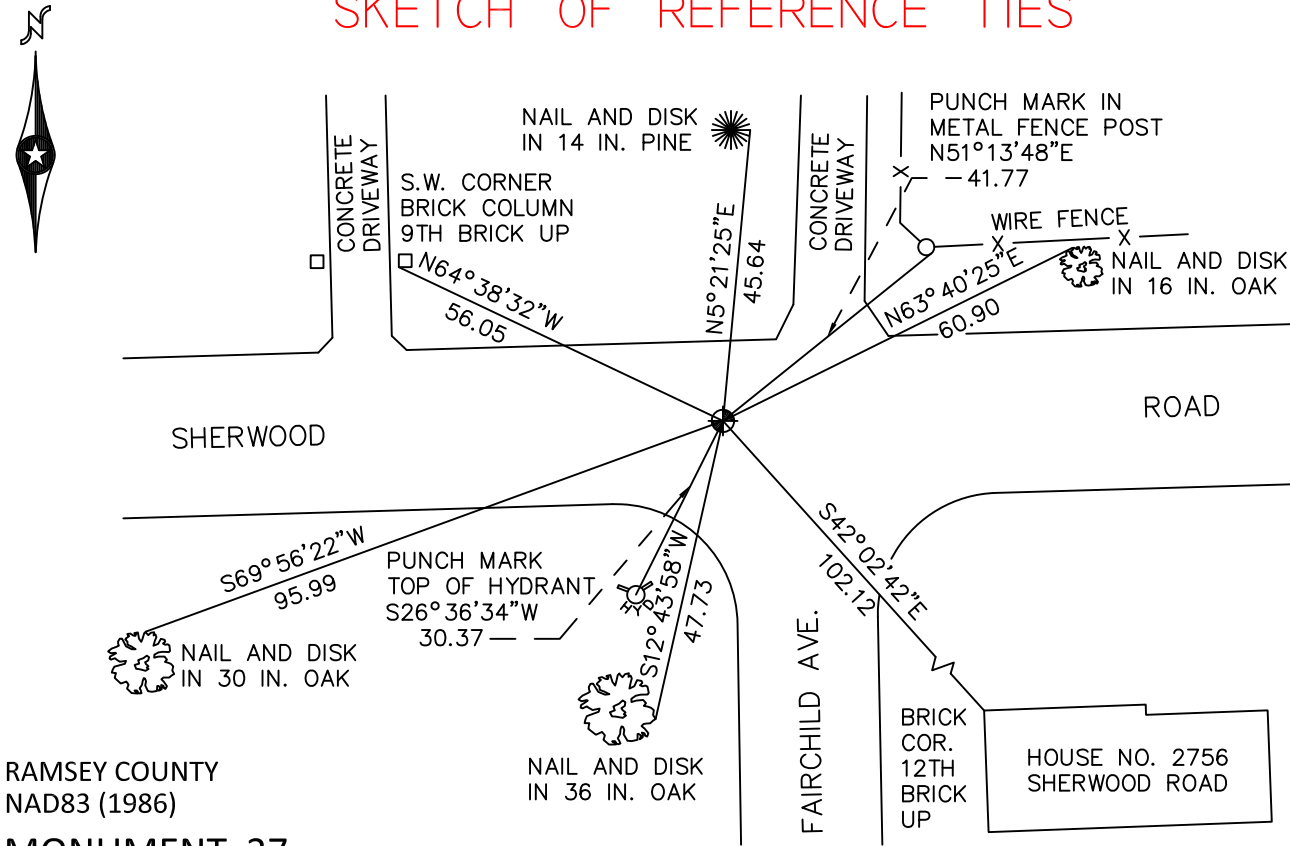
At the corner location shown on the sketch

On May 28, 2010 found a cast iron monument, within a cast iron manhole assembly.

left monument as found       raised/lowered monument       removed monument (explain)

On \_\_\_\_\_ placed a \_\_\_\_\_

### SKETCH OF REFERENCE TIES



RAMSEY COUNTY  
NAD83 (1986)

### MONUMENT 27

X= 542344.878 (Easting)  
Y= 218180.393 (Northing)

ALL DISTANCES ARE SHOWN IN U.S. SURVEY FEET.  
BEARINGS ARE FOR TIE REFERENCE PURPOSES ONLY.

Statements of evidence relative to this corner are on the following page.

I hereby certify that this document has been prepared by me or under my direct supervision this \_\_\_\_\_ day of \_\_\_\_\_, 20\_\_\_\_.

Minnesota License No. \_\_\_\_\_

- County Surveyor       Deputy County Surveyor       Land Surveyor

SIGNATURE

OFFICE OF COUNTY SURVEYOR  
County of Ramsey

I hereby certify that this document was filed in the County Surveyor's office this \_\_\_\_\_ day of \_\_\_\_\_, 20\_\_\_\_.

Michael D. Fiebiger, P.L.S.  
Ramsey County Surveyor

SIGNATURE

## MONUMENT 27

Found a cast iron monument, down 1 in. and tied, August 23, 1974.

Checked monument, November 21, 1991.

Retied monument, December 14, 1998.

Retied monument, July 8, 2004.

Monument missing; set a 20 in. cast iron monument within a cast iron manhole assembly using existing ties and Monument No. 28, May 27, 2010.

Tied monument, May 28, 2010.