

# MONUMENT 268

## CERTIFICATE OF LOCATION OF GOVERNMENT CORNER

South Quarter Corner of Section 28, Township 30 North, Range 22 West, County of Ramsey, State of Minnesota.

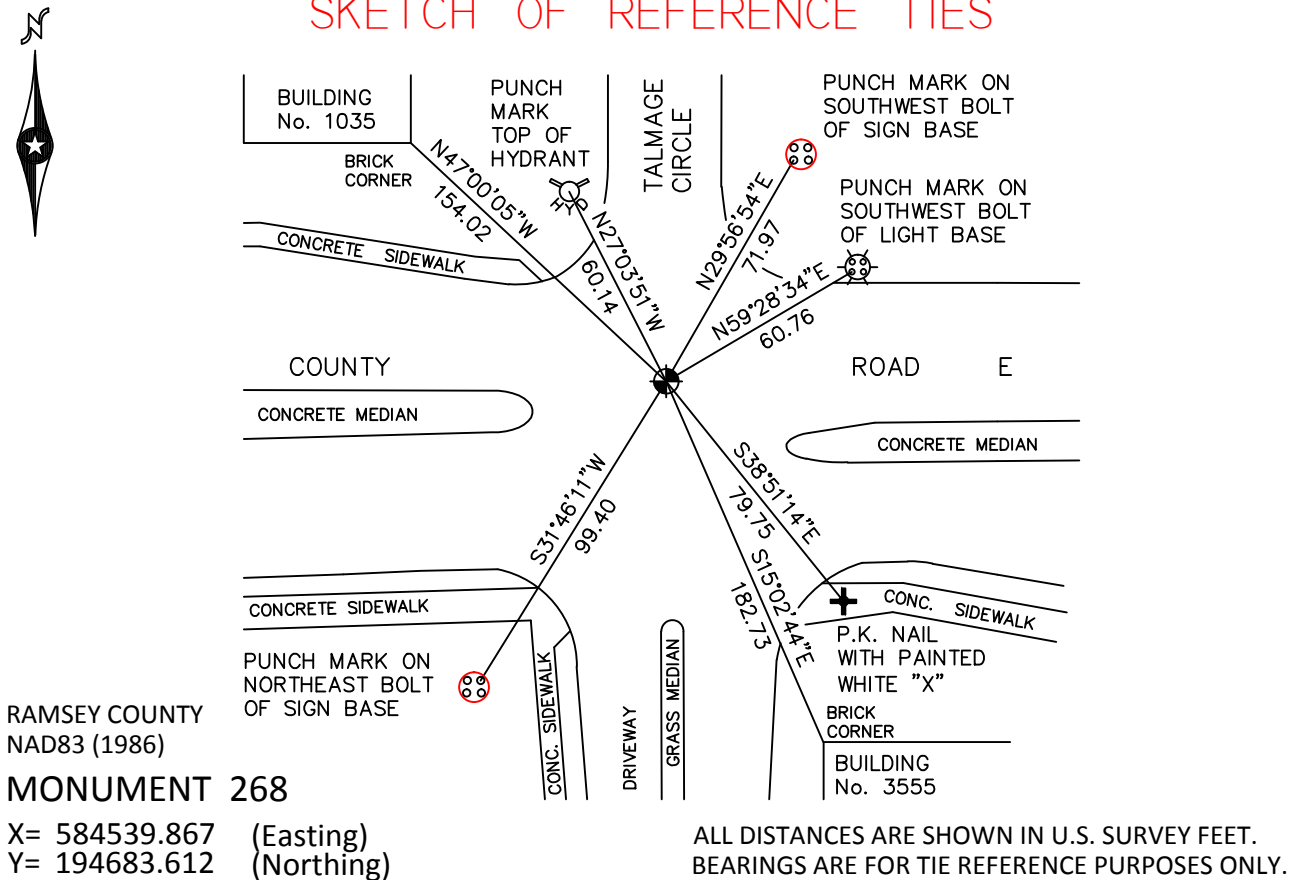
At the corner location shown on the sketch

On July 27, 2010 found a cast iron monument, flush.

left monument as found       raised/lowered monument       removed monument (explain)

On \_\_\_\_\_ placed a \_\_\_\_\_

### SKETCH OF REFERENCE TIES



Statements of evidence relative to this corner are on the following page.

I hereby certify that this document has been prepared by me or under my direct supervision this \_\_\_\_\_ day of \_\_\_\_\_, 20\_\_\_\_.

\_\_\_\_\_  
SIGNATURE

Minnesota License No. \_\_\_\_\_

- County Surveyor       Land Surveyor  
 Deputy County Surveyor

OFFICE OF COUNTY SURVEYOR  
 County of Ramsey

I hereby certify that this document was filed in the County Surveyor's office this \_\_\_\_\_ day of \_\_\_\_\_, 20\_\_\_\_.

\_\_\_\_\_  
SIGNATURE  
 Michael D. Fiebiger, P.L.S.  
 Ramsey County Surveyor

## MONUMENT 268

Found a cast iron monument flush and tied, April, 1974.

Replaced 20 in. cast iron monument after road reconstruction, 1977.

Tied monument, January 9, 1992.

Set a 20 in. cast iron monument, September, 1994.

Tied monument, December 8, 1998.

Retied monument, October 27, 2005.

Retied monument, July 27, 2010.