

# MONUMENT 262

## CERTIFICATE OF LOCATION OF GOVERNMENT CORNER

North Quarter Corner of Section 36, Township 30 North, Range 23 West, County of Ramsey, State of Minnesota.

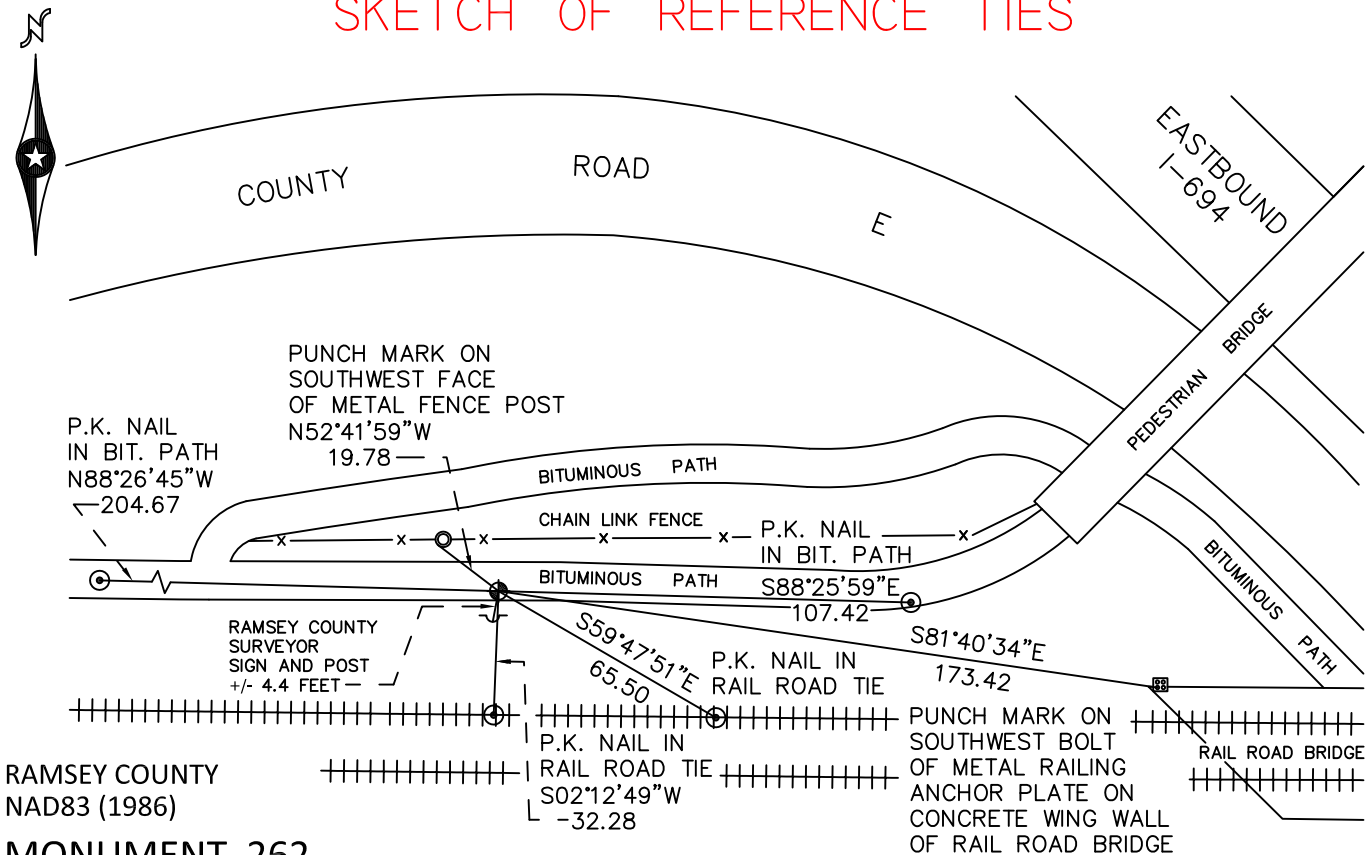
At the corner location shown on the sketch

On July 26, 2010 found a cast iron monument, flush.

left monument as found       raised/lowered monument       removed monument (explain)

On \_\_\_\_\_ placed a \_\_\_\_\_

### SKETCH OF REFERENCE TIES



RAMSEY COUNTY  
NAD83 (1986)

### MONUMENT 262

X= 568972.556 (Easting)  
Y= 194622.328 (Northing)

ALL DISTANCES ARE SHOWN IN U.S. SURVEY FEET.  
BEARINGS ARE FOR TIE REFERENCE PURPOSES ONLY.

Statements of evidence relative to this corner are on the following page.

I hereby certify that this document has been prepared by me or under my direct supervision this \_\_\_\_\_ day of \_\_\_\_\_, 20\_\_\_\_.

\_\_\_\_\_  
MINNESOTA LICENSE NO. \_\_\_\_\_

- County Surveyor       Deputy County Surveyor       Land Surveyor

OFFICE OF COUNTY SURVEYOR  
County of Ramsey

I hereby certify that this document was filed in the County Surveyor's office this \_\_\_\_\_ day of \_\_\_\_\_, 20\_\_\_\_.

\_\_\_\_\_  
Craig W. Hinzman, L.S.  
Ramsey County Surveyor

## MONUMENT 262

Found a cast iron monument flush and tied, July 30, 1974.

Placed a sign and post +/-2 ft. southwest of cast iron monument and retied, June 27, 1991.

Removed cast iron monument for City of Shoreview path construction, June 2, 1997.

Reset a 20 in. cast iron monument, cemented, placed sign and post 4.5 ft. south and tied, June 25, 1998.

Retied monument, October 24, 2005.

Found cast iron monument in good condition; no new ties taken, August 30, 2006.

Retied monument, July 26, 2010.