

# MONUMENT 260

## CERTIFICATE OF LOCATION OF GOVERNMENT CORNER

North Quarter Corner of Section 35, Township 30 North, Range 23 West, County of Ramsey, State of Minnesota.

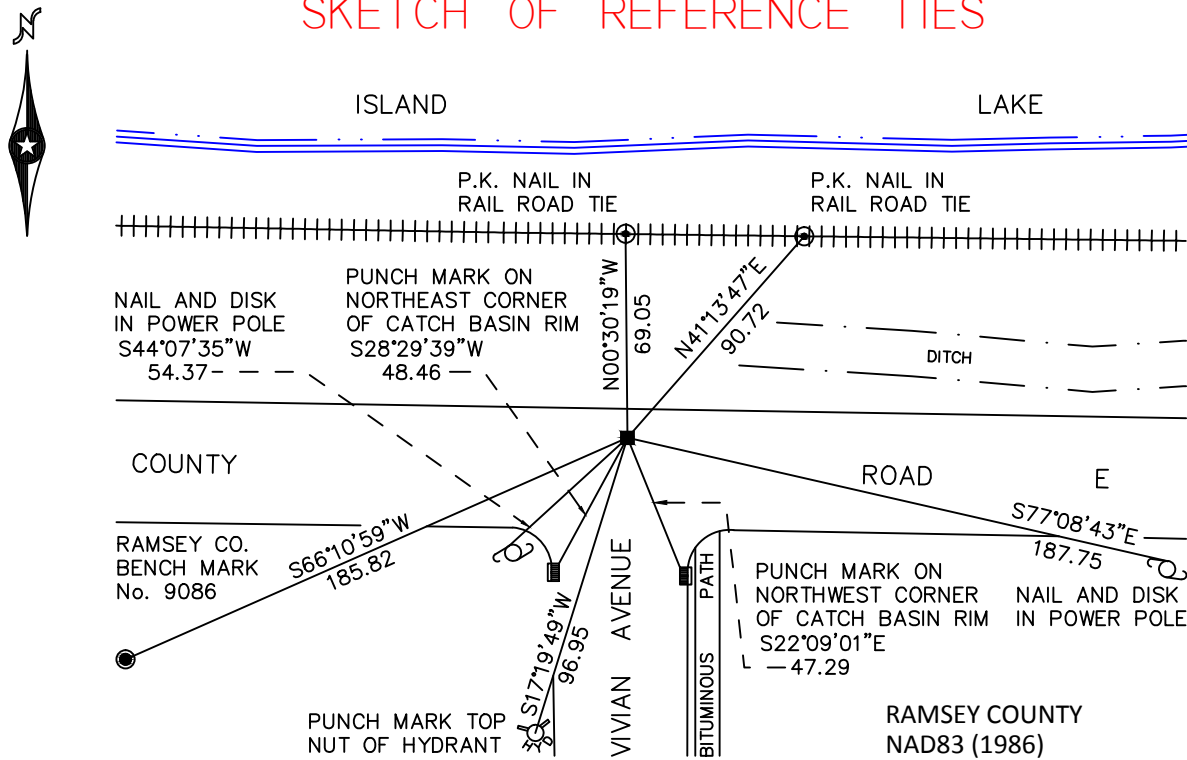
At the corner location shown on the sketch

On July 22, 2010 found a granite monument, within a cast iron manhole assembly.

left monument as found       raised/lowered monument       removed monument (explain)

On \_\_\_\_\_ placed a \_\_\_\_\_

### SKETCH OF REFERENCE TIES



ALL DISTANCES ARE SHOWN IN U.S. SURVEY FEET.  
BEARINGS ARE FOR TIE REFERENCE PURPOSES ONLY.

RAMSEY COUNTY  
NAD83 (1986)  
**MONUMENT 260**  
X= 563703.615 (Easting)  
Y= 194587.901 (Northing)

Statements of evidence relative to this corner are on the following page.

I hereby certify that this document has been prepared by me or under my direct supervision this \_\_\_\_\_ day of \_\_\_\_\_, 20\_\_\_\_.

\_\_\_\_\_  
MINNESOTA LICENSE NO. \_\_\_\_\_  
 County Surveyor  
 Deputy County Surveyor       Land Surveyor

OFFICE OF COUNTY SURVEYOR  
County of Ramsey

I hereby certify that this document was filed in the County Surveyor's office this \_\_\_\_\_ day of \_\_\_\_\_, 20\_\_\_\_.

\_\_\_\_\_  
Craig W. Hinzman, L.S.  
Ramsey County Surveyor

## MONUMENT 260

Position established and placed a granite monument, March, 1942.

Found a solid iron at monument location. Dug and found a granite monument down 0.91 ft., June 25, 1975.

Set a cast iron monument over granite monument, May 26, 1976.

Cast iron monument down +/-0.35 ft.; tied, June 4, 1990.

Retied monument, July 8, 1998.

Removed old cast iron monument; granite monument down 11.5 in., July 14, 1998.

Set a cast iron manhole assembly over the granite monument, August 10, 1999.

Tied monument, October 25, 2005.

Retied monument, July 22, 2010.