

MONUMENT 258

CERTIFICATE OF LOCATION OF GOVERNMENT CORNER

South Quarter Corner of Section 27, Township 30 North, Range 23 West, County of Ramsey, State of Minnesota.

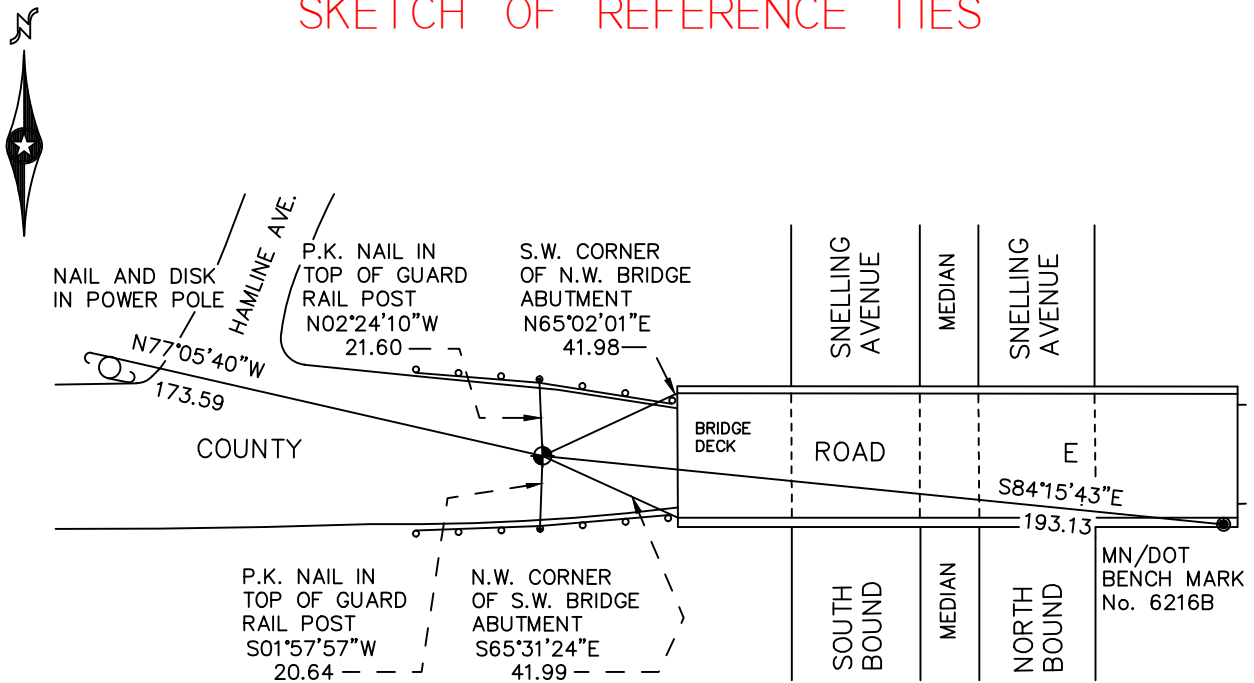
At the corner location shown on the sketch

On July 26, 2010 found a cast iron monument, within a cast iron manhole assembly.

left monument as found raised/lowered monument removed monument (explain)

On _____ placed a _____

SKETCH OF REFERENCE TIES



RAMSEY COUNTY
NAD83 (1986)

MONUMENT 258

X= 558431.789 (Easting)
Y= 194549.858 (Northing)

ALL DISTANCES ARE SHOWN IN U.S. SURVEY FEET.
BEARINGS ARE FOR TIE REFERENCE PURPOSES ONLY.

Statements of evidence relative to this corner are on the following page.

I hereby certify that this document has been prepared by me or under my direct supervision this _____ day of _____, 20____.

SIGNATURE

Minnesota License No. _____

- County Surveyor Land Surveyor
 Deputy County Surveyor

OFFICE OF COUNTY SURVEYOR
County of Ramsey

I hereby certify that this document was filed in the County Surveyor's office this _____ day of _____, 20____.

SIGNATURE

Craig W. Hinzman, L.S.
Ramsey County Surveyor

MONUMENT 258

Found nothing at corner location. Set a cast iron monument. Granite monument may exist in pavement below, no date given in field book.

Cast iron monument milled off, July, 1987.

Cast iron monument replaced, no date given in field book.

Tied monument, January 9, 1992.

Tied out monument for construction, April 26, 2000.

Lowered 20 in. cast iron monument, May 2, 2000.

Set a cast iron manhole assembly over monument, October, 2000.

Tied monument, October 26, 2005.

Retied monument, July 26, 2010.