

MONUMENT 252

CERTIFICATE OF LOCATION OF GOVERNMENT CORNER

South Quarter Corner of Section 30, Township 30 North, Range 22 West, County of Ramsey, State of Minnesota.

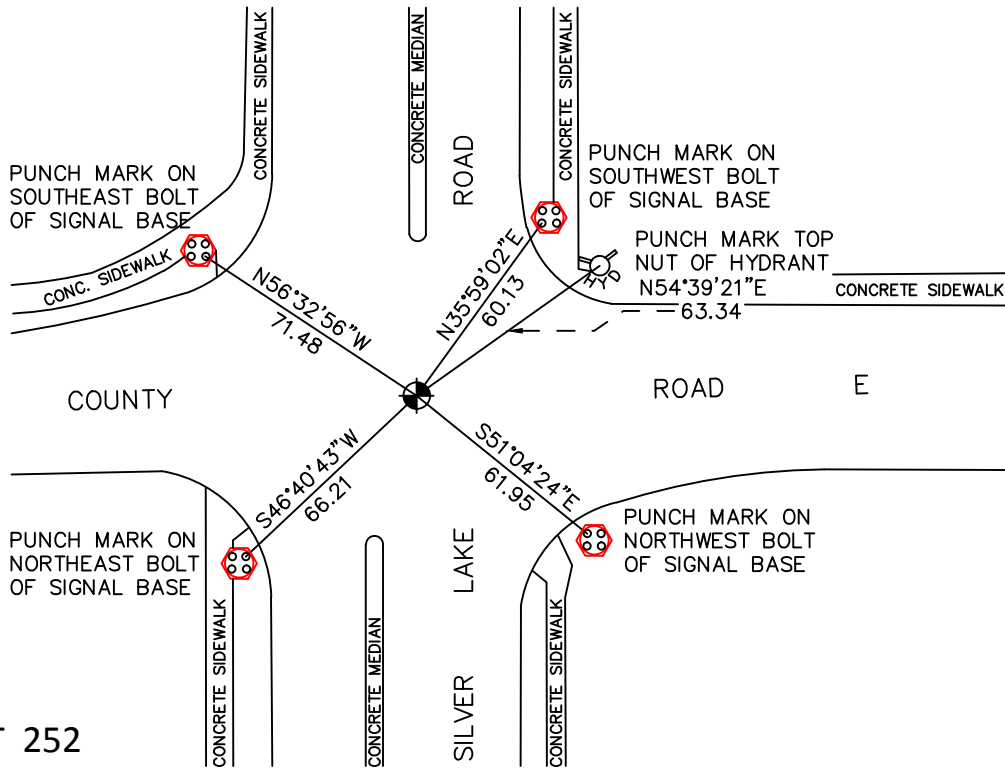
At the corner location shown on the sketch

On July 23, 2010 found a cast iron monument, within a cast iron manhole assembly.

left monument as found raised/lowered monument removed monument (explain)

On _____ placed a _____

SKETCH OF REFERENCE TIES



RAMSEY COUNTY
NAD83 (1986)

MONUMENT 252

X= 542645.473 (Easting)
Y= 194454.693 (Northing)

ALL DISTANCES ARE SHOWN IN U.S. SURVEY FEET.
BEARINGS ARE FOR TIE REFERENCE PURPOSES ONLY.

Statements of evidence relative to this corner are on the following page.

I hereby certify that this document has been prepared by me or under my direct supervision this _____ day of _____, 20____.

MINNESOTA LICENSE NO. _____ SIGNATURE

- County Surveyor
 Deputy County Surveyor Land Surveyor

OFFICE OF COUNTY SURVEYOR
County of Ramsey

I hereby certify that this document was filed in the County Surveyor's office this _____ day of _____, 20____.

SIGNATURE
Craig W. Hinzman, L.S.
Ramsey County Surveyor

MONUMENT 252

Found an odd sized iron monument, July, 1974.

Tied out iron monument which was approximately 0.15 ft. below surface; there appeared to be a metal plate with a hole in the middle over said iron, June 27, 1991.

Construction removed monument, 1995.

Contractor set a cast iron manhole assembly, 1996.

Reset monument location; set P.K. nails, September 3, 1997.

Set a 20 in. cast iron monument down +/-14 in., June 1, 1998.

Tied monument, July 31, 1998.

Retied monument, October 24, 2005.

Retied monument, July 23, 2010.