

MONUMENT 251

CERTIFICATE OF LOCATION OF GOVERNMENT CORNER

Southwest Corner of Section 30, Township 30 North, Range 23 West, County of Ramsey, State of Minnesota.

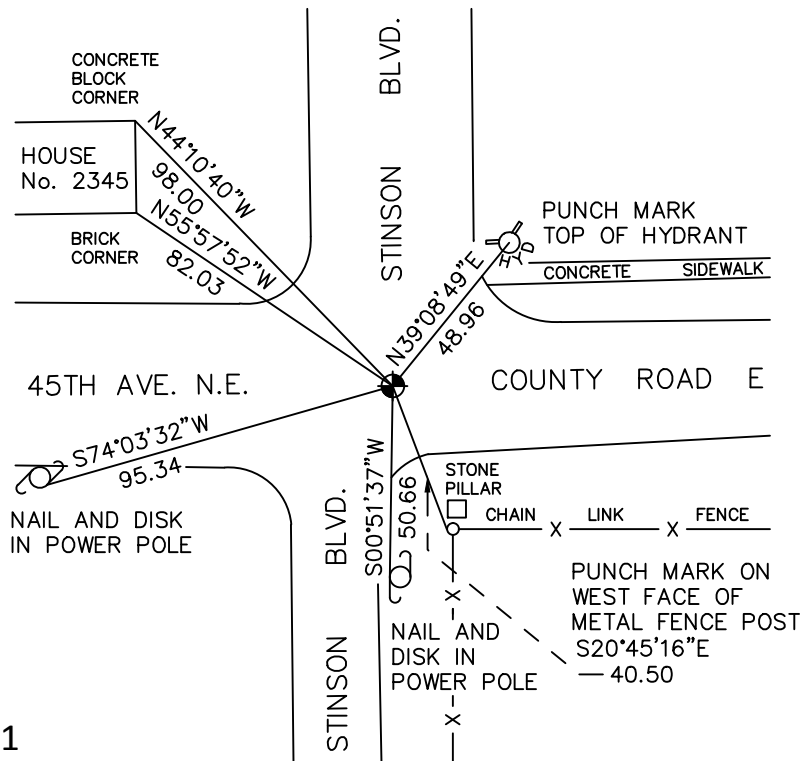
At the corner location shown on the sketch

On July 23, 2010 found a cast iron monument, down 0.1 feet.

left monument as found raised/lowered monument removed monument (explain)

On _____ placed a _____

SKETCH OF REFERENCE TIES



RAMSEY COUNTY
NAD83 (1986)

MONUMENT 251

X= 540400.091 (Easting)
Y= 194415.021 (Northing)

ALL DISTANCES ARE SHOWN IN U.S. SURVEY FEET.
BEARINGS ARE FOR TIE REFERENCE PURPOSES ONLY.

Statements of evidence relative to this corner are on the following page.

I hereby certify that this document has been prepared by me or under my direct supervision this _____ day of _____, 20____.

SIGNATURE

Minnesota License No. _____

- County Surveyor Land Surveyor
 Deputy County Surveyor

OFFICE OF COUNTY SURVEYOR
County of Ramsey

I hereby certify that this document was filed in the County Surveyor's office this _____ day of _____, 20____.

SIGNATURE

Michael D. Fiebiger, P.L.S.
Ramsey County Surveyor

MONUMENT 251

Found a granite monument, down 7 1/4 in. and tied, July 12, 1974.

Placed a short cast iron monument, July 17, 1975.

Removed a 4 5/8 in. cast iron monument, May 7, 1990.

Replaced the 4 5/8 in. cast iron monument and tied, July 12, 1990.

Tied monument, July 31, 1998.

Retied monument, October 24, 2005.

Retied monument, July 23, 2010.