

MONUMENT 250

CERTIFICATE OF LOCATION OF GOVERNMENT CORNER

East Quarter Corner of Section 25, Township 30 North, Range 22 West, County of Ramsey, State of Minnesota.

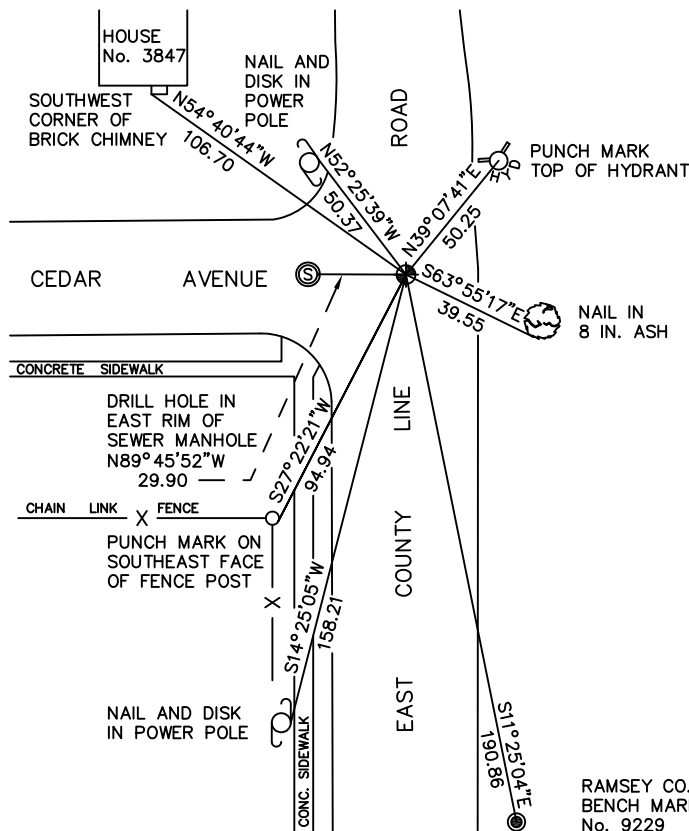
At the corner location shown on the sketch

On July 6, 2010 found a cast iron monument, down 0.05 feet.

left monument as found raised/lowered monument removed monument (explain)

On _____ placed a _____

SKETCH OF REFERENCE TIES



RAMSEY COUNTY
NAD83 (1986)

MONUMENT 250

X= 603014.597 (Easting)
Y= 197373.781 (Northing)

ALL DISTANCES ARE SHOWN IN U.S. SURVEY FEET.
BEARINGS ARE FOR TIE REFERENCE PURPOSES ONLY.

Statements of evidence relative to this corner are on the following page.

I hereby certify that this document has been prepared by me or under my direct supervision this _____ day of _____, 20____.

MINNESOTA LICENSE NO. _____ SIGNATURE

- County Surveyor Deputy County Surveyor Land Surveyor

OFFICE OF COUNTY SURVEYOR
County of Ramsey

I hereby certify that this document was filed in the County Surveyor's office this _____ day of _____, 20____.

MICHAEL D. FIEBIGER, P.L.S.
RAMSEY COUNTY SURVEYOR SIGNATURE

MONUMENT 250

Found a 0.3 ft. rivet over a granite monument. Found a granite monument down 0.35 ft., May 28, 1974.

Set a cast iron cap and bolt monument, July 25, 1975.

Tied monument, January 29, 1976.

Retied monument, June 21, 1991.

Set a 20 in. cast iron monument in concrete, July, 1996.

Tied monument, December 11, 1998.

Retied monument, July 28, 2005.

Retied monument, July 6, 2010.