

# MONUMENT 245

## CERTIFICATE OF LOCATION OF GOVERNMENT CORNER

Center of Section 27, Township 30 North, Range 22 West, County of Ramsey, State of Minnesota.

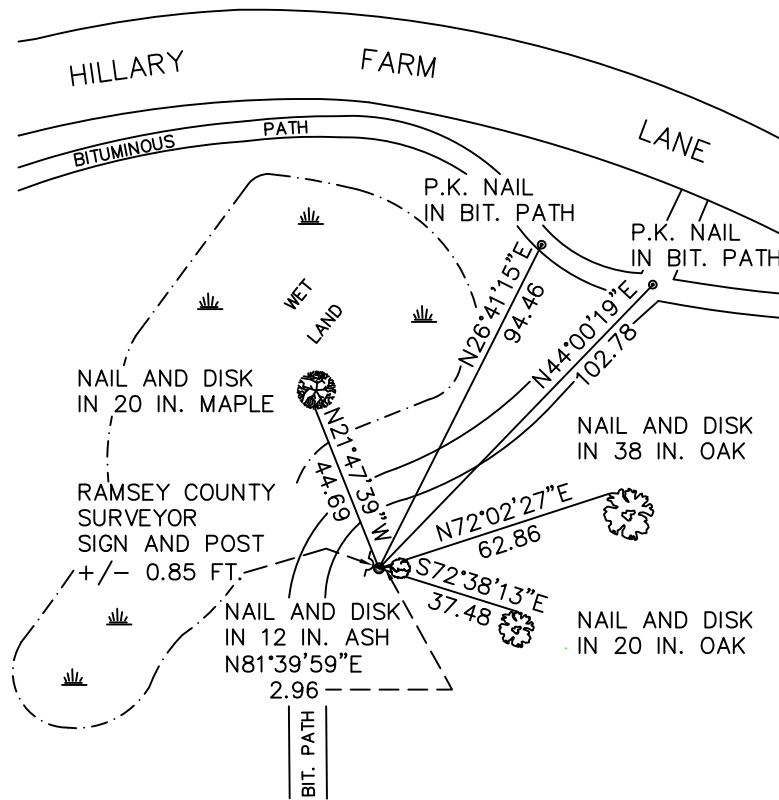
At the corner location shown on the sketch

On October 22, 2010 found a 2.5 inch pipe, with 3 inch threaded collar on top, up 2 feet.

left monument as found       raised/lowered monument       removed monument (explain)

On \_\_\_\_\_ placed a \_\_\_\_\_

### SKETCH OF REFERENCE TIES



RAMSEY COUNTY  
NAD83 (1986)

### MONUMENT 245

X= 589818.573 (Easting)  
Y= 197343.969 (Northing)

ALL DISTANCES ARE SHOWN IN U.S. SURVEY FEET.  
BEARINGS ARE FOR TIE REFERENCE PURPOSES ONLY.

Statements of evidence relative to this corner are on the following page.

I hereby certify that this document has been prepared by me or under my direct supervision this \_\_\_\_\_ day of \_\_\_\_\_, 20\_\_\_\_.

\_\_\_\_\_  
MINNESOTA LICENSE NO. \_\_\_\_\_  
SIGNATURE

- County Surveyor       Deputy County Surveyor       Land Surveyor

OFFICE OF COUNTY SURVEYOR  
County of Ramsey

I hereby certify that this document was filed in the County Surveyor's office this \_\_\_\_\_ day of \_\_\_\_\_, 20\_\_\_\_.

\_\_\_\_\_  
SIGNATURE  
Craig W. Hinzman, L.S.  
Ramsey County Surveyor

## MONUMENT 245

Found a 2 in. diameter iron pipe, up +/-2 ft., with a right of way sign next to it, May 29, 1974.

Tied monument, June 21, 1991.

Removed right of way sign and placed a Ramsey County Surveyor sign and retied monument, August 16, 1996.

Retied iron pipe monument, September 23, 2004.

Retied monument, October 22, 2010.