

MONUMENT 243

CERTIFICATE OF LOCATION OF GOVERNMENT CORNER

Center of Section 28, Township 30 North, Range 22 West, County of Ramsey, State of Minnesota.

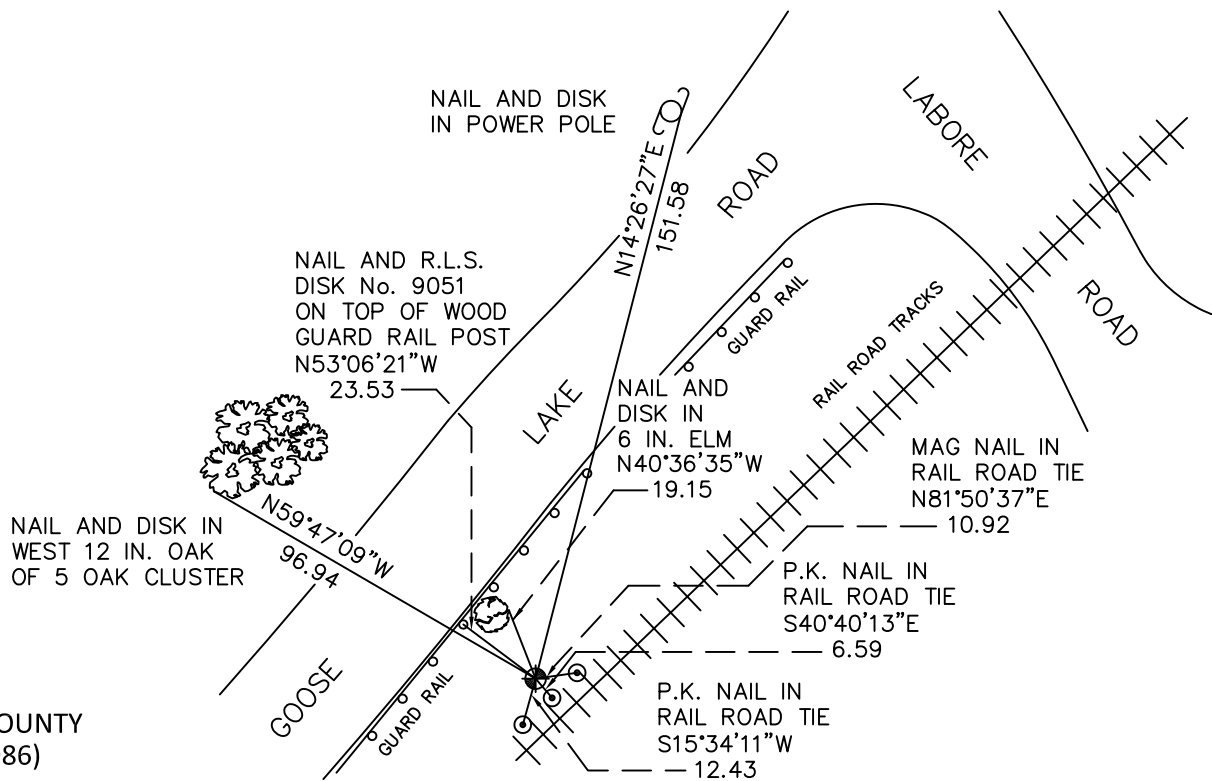
At the corner location shown on the sketch

On July 27, 2010 found a cast iron monument, down 0.1 feet.

left monument as found raised/lowered monument removed monument (explain)

On _____ placed a _____

SKETCH OF REFERENCE TIES



RAMSEY COUNTY
NAD83 (1986)

MONUMENT 243

X= 584541.419 (Easting)
Y= 197327.375 (Northing)

ALL DISTANCES ARE SHOWN IN U.S. SURVEY FEET.
BEARINGS ARE FOR TIE REFERENCE PURPOSES ONLY.

Statements of evidence relative to this corner are on the following page.

I hereby certify that this document has been prepared by me or under my direct supervision this _____ day of _____, 20____.

SIGNATURE

Minnesota License No. _____

- County Surveyor Deputy County Surveyor Land Surveyor

OFFICE OF COUNTY SURVEYOR
County of Ramsey

I hereby certify that this document was filed in the County Surveyor's office this _____ day of _____, 20____.

SIGNATURE

Craig W. Hinzman, L.S.
Ramsey County Surveyor

MONUMENT 243

Found a 1/2 in. inside diameter pipe over granite monument, down 1.3 ft., May, 1974.

Placed a cast iron monument and concrete around base and tied out, May 28, 1974.

Retied monument, April 18, 1988.

Found a cast iron monument and ties; set a sign and post +/-0.4 ft. northeasterly of monument, October 2, 1996.

Retied monument, sign and post gone, March 28, 2005.

Retied monument, July 27, 2010.