

# MONUMENT 240

## CERTIFICATE OF LOCATION OF GOVERNMENT CORNER

West Quarter Corner of Section 29, Township 30 North, Range 22 West, County of Ramsey, State of Minnesota.

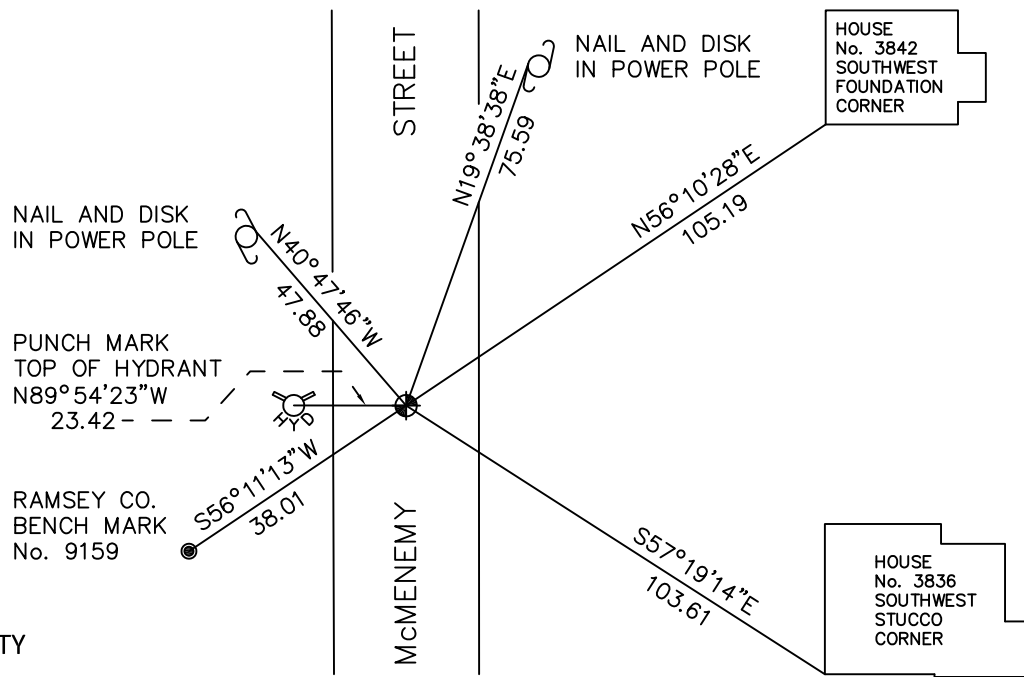
At the corner location shown on the sketch

On June 17, 2010 found a cast iron monument, within a cast iron manhole assembly.

left monument as found       raised/lowered monument       removed monument (explain)

On \_\_\_\_\_ placed a \_\_\_\_\_

### SKETCH OF REFERENCE TIES



RAMSEY COUNTY  
NAD83 (1986)

### MONUMENT 240

X= 576644.173 (Easting)  
Y= 197294.534 (Northing)

ALL DISTANCES ARE SHOWN IN U.S. SURVEY FEET.  
BEARINGS ARE FOR TIE REFERENCE PURPOSES ONLY.

Statements of evidence relative to this corner are on the following page.

I hereby certify that this document has been prepared by me or under my direct supervision this \_\_\_\_\_ day of \_\_\_\_\_, 20\_\_\_\_.

Minnesota License No. \_\_\_\_\_

- County Surveyor       Deputy County Surveyor       Land Surveyor

OFFICE OF COUNTY SURVEYOR  
County of Ramsey

I hereby certify that this document was filed in the County Surveyor's office this \_\_\_\_\_ day of \_\_\_\_\_, 20\_\_\_\_.

Michael D. Fiebiger, P.L.S.  
Ramsey County Surveyor

## MONUMENT 240

Found a 2 in. diameter by 2 ft. long solid iron, bent over. Dug down 0.05 ft. and found spike toward tie; dug down 0.1 ft. and found spike that matched old ties; dug down to bottom of 2 in. iron and up-righted, the iron then matched ties. Placed a cast iron monument using old ties and bottom of a 2 in. iron, June 24, 1974.

Tied monument, September 11, 1974.

Retied monument, December 20, 1991.

Retied monument, June 11, 2001.

Lowered monument 18 in., July 3, 2001.

Set P.K. nails and manhole assembly, July 15, 2001.

Tied monument, March 14, 2005.

Retied monument, June 17, 2010.