

MONUMENT 237

CERTIFICATE OF LOCATION OF GOVERNMENT CORNER

Center of Section 25, Township 30 North, Range 23 West, County of Ramsey,
State of Minnesota.

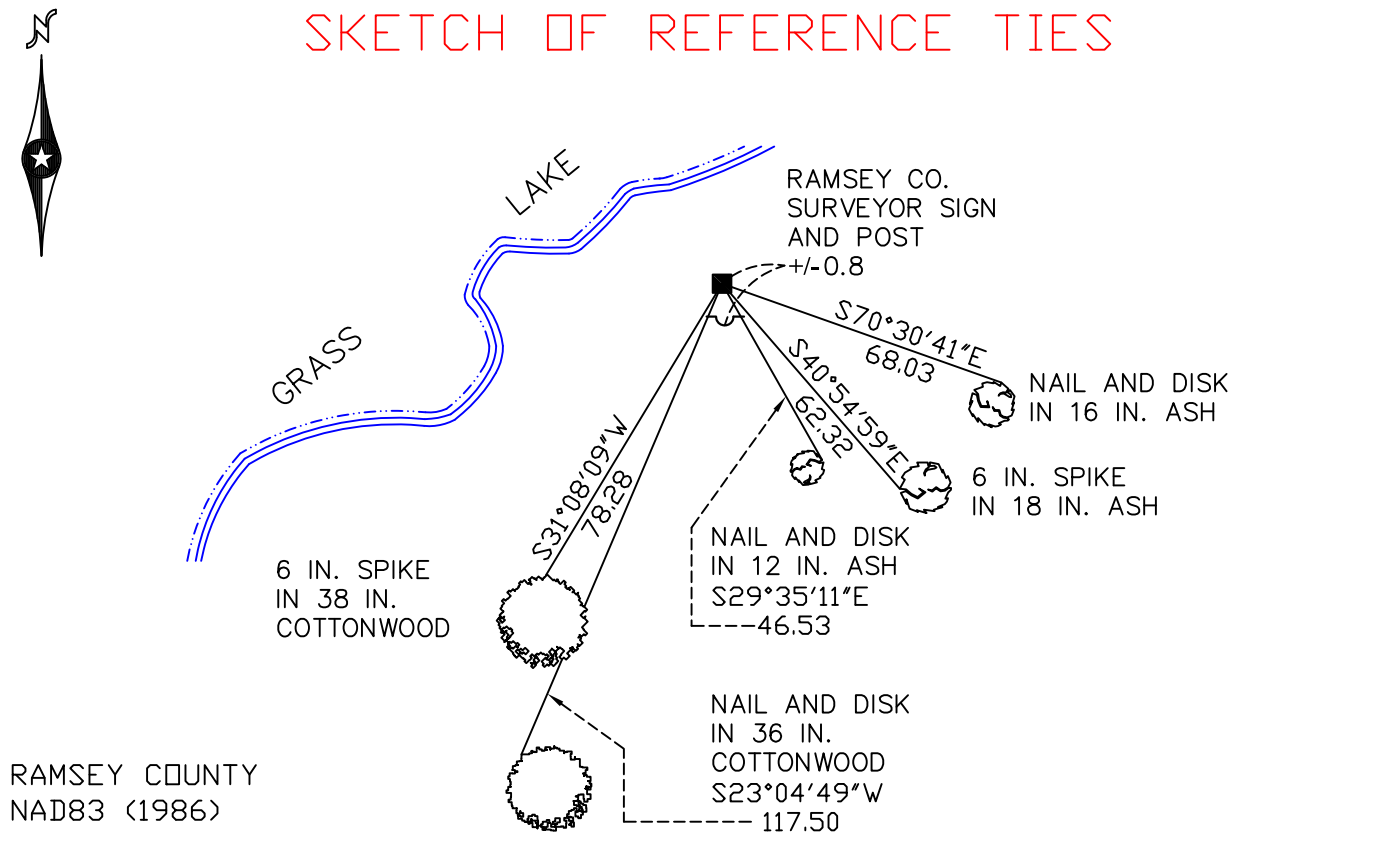
At the corner location shown on the sketch

On March 17, 2010 found a granite monument, down 1.0 feet.

left monument as found lowered monument removed monument (explain)

On _____ placed a _____

SKETCH OF REFERENCE TIES



RAMSEY COUNTY
NAD83 (1986)
MONUMENT 237

X= 568950.528 (Easting)
Y= 197255.051 (Northing)

ALL DISTANCES ARE SHOWN IN U.S. SURVEY FEET.
BEARINGS ARE FOR TIE REFERENCE PURPOSES ONLY.

Statements of evidence relative to this corner are on the following page(s).

I hereby certify that this document and the data contained herein was prepared by me or under my direct supervision this _____ day of _____, 20____.

SIGNATURE

Minnesota License No. _____

- County Surveyor Deputy County Surveyor Land Surveyor

OFFICE OF COUNTY SURVEYOR
County of Ramsey

I hereby certify that this document was filed in the County Surveyor's office on the _____ day of _____, 20____.

SIGNATURE

Michael D. Fiebiger, P.L.S.
Ramsey County Surveyor

MONUMENT 237

Found a granite monument, up 0.6 ft., tied monument, December 10, 1975.

Found a granite monument, down 1.0 ft., retied monument; set sign and post 0.8 ft. south of monument, March 27, 2002.

Retied monument, March 17, 2010.