

MONUMENT 236E

CERTIFICATE OF LOCATION OF GOVERNMENT CORNER

Witness Monument West of the Center of Section 25, Township 30 North, Range 23 West, County of Ramsey, State of Minnesota.

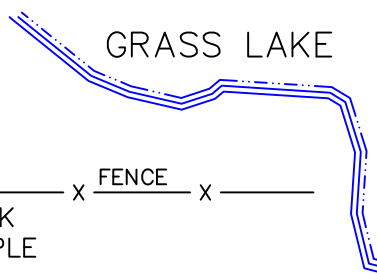
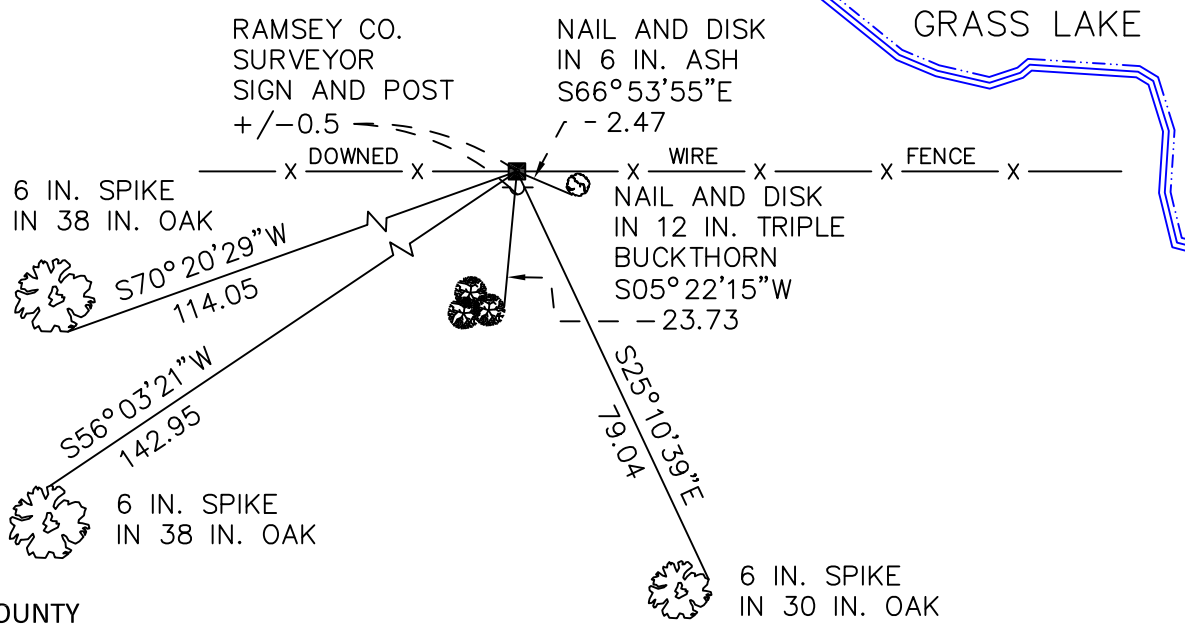
At the corner location shown on the sketch

On March 17, 2010 found a granite monument, up 0.5 feet.

left monument as found raised/lowered monument removed monument (explain)

On _____ placed a _____

SKETCH OF REFERENCE TIES



RAMSEY COUNTY
NAD83 (1986)

MONUMENT 236E

X= 568190.739 (Easting)
Y= 197252.529 (Northing)

ALL DISTANCES ARE SHOWN IN U.S. SURVEY FEET.
BEARINGS ARE FOR TIE REFERENCE PURPOSES ONLY.

Statements of evidence relative to this corner are on the following page.

I hereby certify that this document has been prepared by me or under my direct supervision this _____ day of _____, 20____.

MINNESOTA LICENSE NO. _____ SIGNATURE

- County Surveyor Deputy County Surveyor Land Surveyor

OFFICE OF COUNTY SURVEYOR
County of Ramsey

I hereby certify that this document was filed in the County Surveyor's office this _____ day of _____, 20____.

Michael D. Fiebiger, P.L.S.
Ramsey County Surveyor SIGNATURE

MONUMENT 236E

Found a granite monument up +/-3 in. and tied, December 10, 1975.

Found a granite monument up 0.4 ft.; set a sign and post 0.5 ft. south and retied, March 27, 2002.

Retied monument, March 17, 2010.